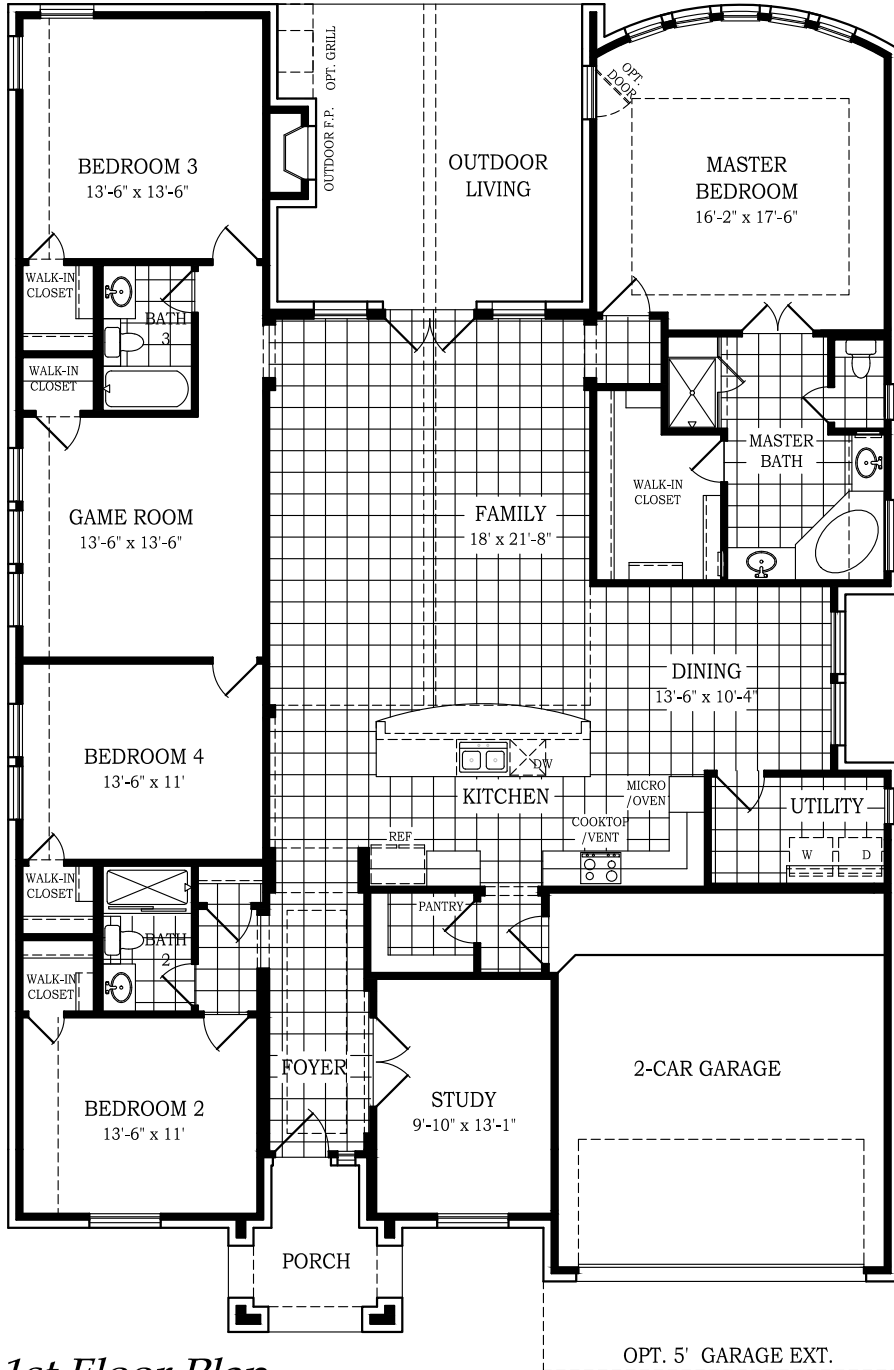


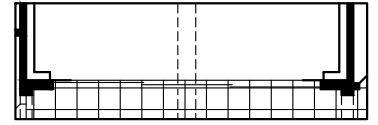
# CHESMAR HOMES

Setting a Higher Standard

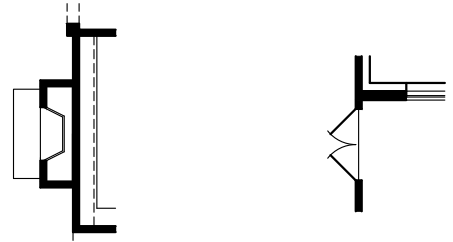
Plan 2720 • Brookville • 2,720 sq. ft. - Indoor Living  
258 sq. ft. - Outdoor Living



1st Floor Plan

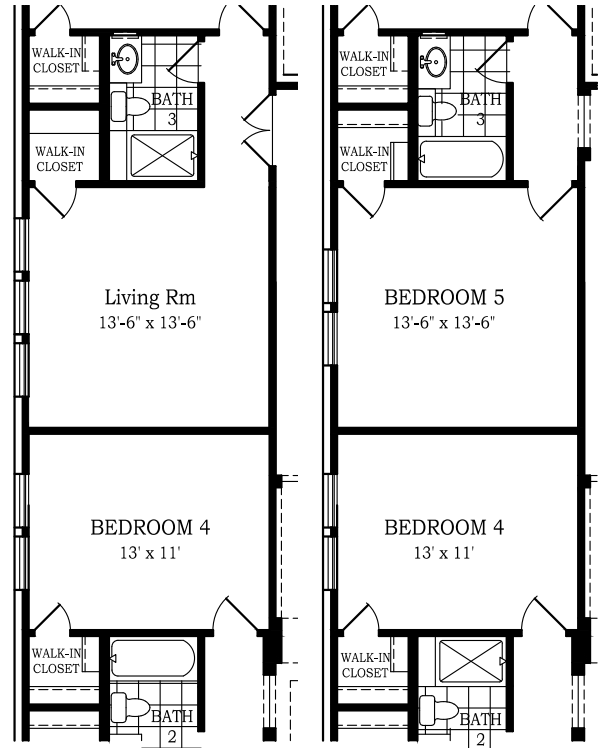


Opt. Sliding Door



Opt. Fireplace @ Family

Opt. Doors @ Game Room



Opt. Generational Suite      Opt. Bed 5

Square footage and room dimensions are approximate and may vary per elevation. Window placement, roof line and porches may also vary by elevation. Plans, features, prices and availability are subject to change without notice.

Print Date: 01/28/20