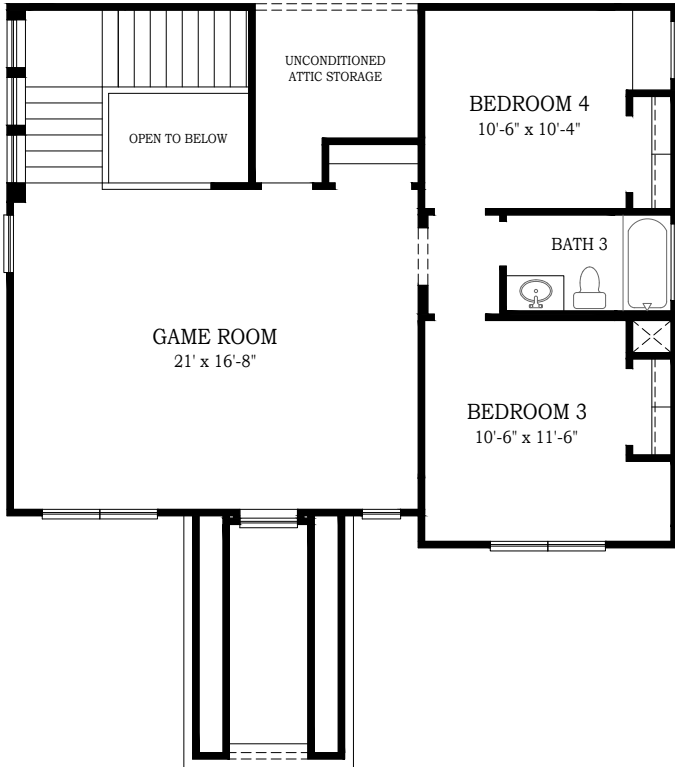




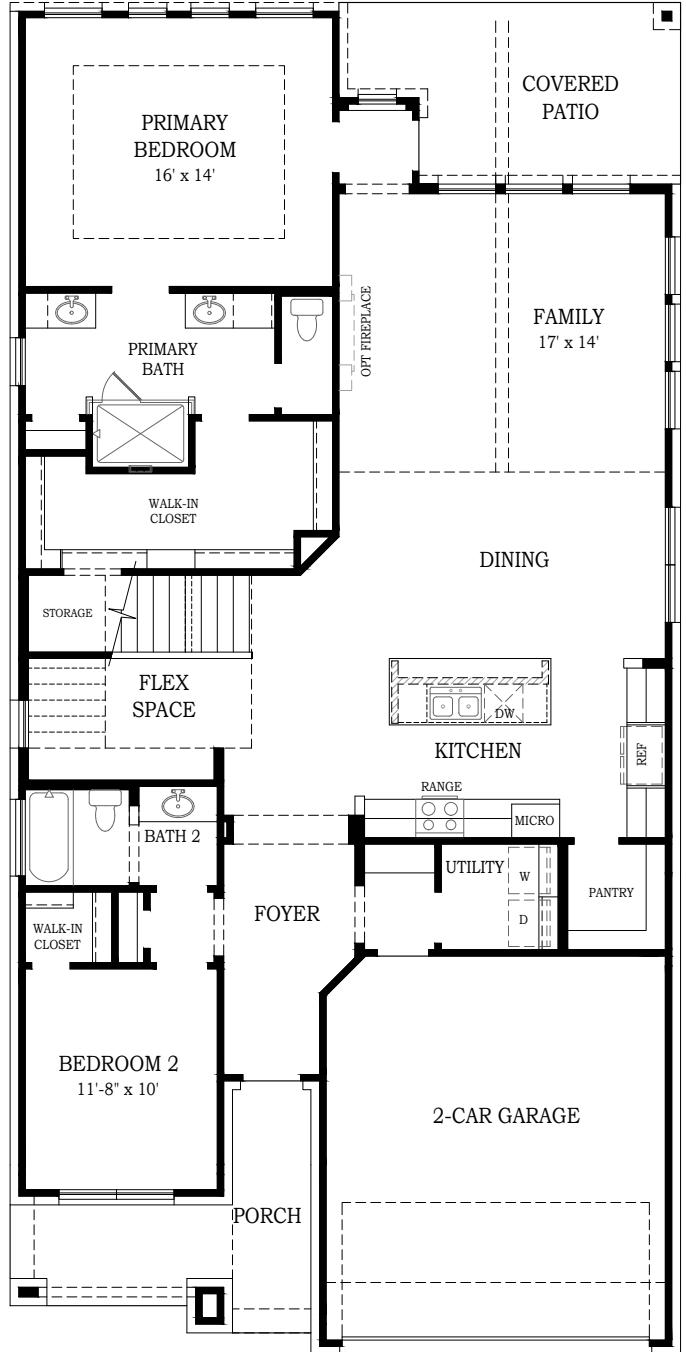
DAYTON

CHESMAR.com

Plan 252935 | 2529 Square Footage | 4 Bedrooms | 3 Baths | 2-Car Garage




2nd Floor Plan



1st Floor Plan

ADDITIONAL APPLIANCE
OPTIONS AVAILABLE PER
COMMUNITY

 Square footage and room dimensions are approximate and may vary per elevation. Window placement, roof line and porches may also vary by elevation. Plans, features, prices and availability are subject to change without notice. VERSION 1.2 5/14/25 (CT)

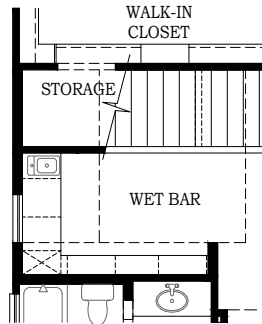




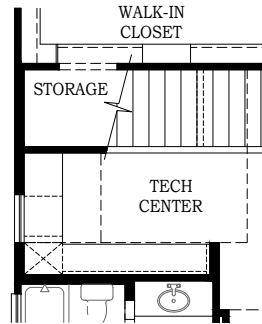
DAYTON

CHESMAR.com

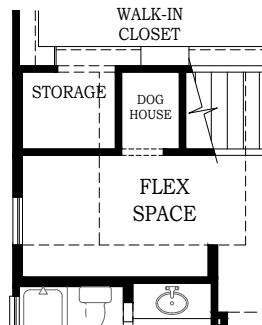
Plan 252935 | 2529 Square Footage | 4 Bedrooms | 3 Baths | 2-Car Garage



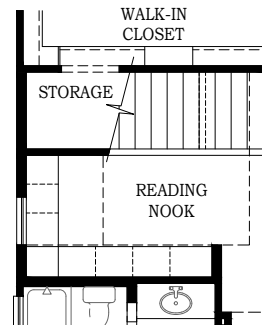
*Opt. Wet Bar
@ Stairwell*



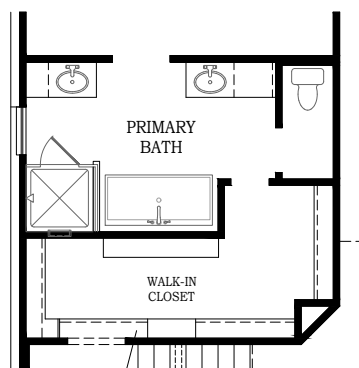
*Opt. Tech Center
@ Stairwell*



*Opt. Dog House
@ Stairwell*



*Opt. Reading
Nook @ Stairwell*



*Opt. Tub & Shower
@ Primary Bath*



Square footage and room dimensions are approximate and may vary per elevation. Window placement, roof line and porches may also vary by elevation. Plans, features, prices and availability are subject to change without notice. VERSION 1.2 5/14/25 (CT)



DAYTON

CHESMAR.com

Plan 252935 | 2529 Square Footage | 4 Bedrooms | 3 Baths | 2-Car Garage



FRONT ELEVATION 'A1'—FARMHOUSE



FRONT ELEVATION 'A1'—TRANSITIONAL



FRONT ELEVATION 'B1'—MODERN PRAIRIE



FRONT ELEVATION 'B1'—MODERN PRAIRIE

STUCCO OPTION



Square footage and room dimensions are approximate and may vary per elevation. Window placement, roof line and porches may also vary by elevation. Plans, features, prices and availability are subject to change without notice. VERSION 1.2 5/14/25 (CT)



Setting a Higher Standard



DAYTON

CHESMAR.com

Plan 252935 | 2529 Square Footage | 4 Bedrooms | 3 Baths | 2-Car Garage



FRONT ELEVATION 'C1'—TRADITIONAL



Square footage and room dimensions are approximate and may vary per elevation. Window placement, roof line and porches may also vary by elevation. Plans, features, prices and availability are subject to change without notice. VERSION 1.2 5/14/25 (CT)