



chesmar.com

# THE TOWNHOMES COLLECTION

## COUNTRYSIDE

plan 7330 - approx. 1,508 sqft



elevation E - Carriagehouse

elevation F - Countryside



elevation G - Carriagehouse

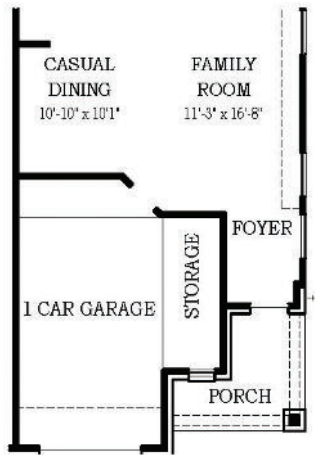
elevation H - Countryside

Availability of elevation options may vary by community, please ask your New Home Consultant for details on the current offerings in the community you are considering. Square footage and room dimensions are approximate and may vary per elevation. Window placement, roof line and porches may also vary by elevation. Plans, features, prices, and availability are subject to change without notice. Print date: 3-16-26



### THIS HOME FEATURES | OPTIONS

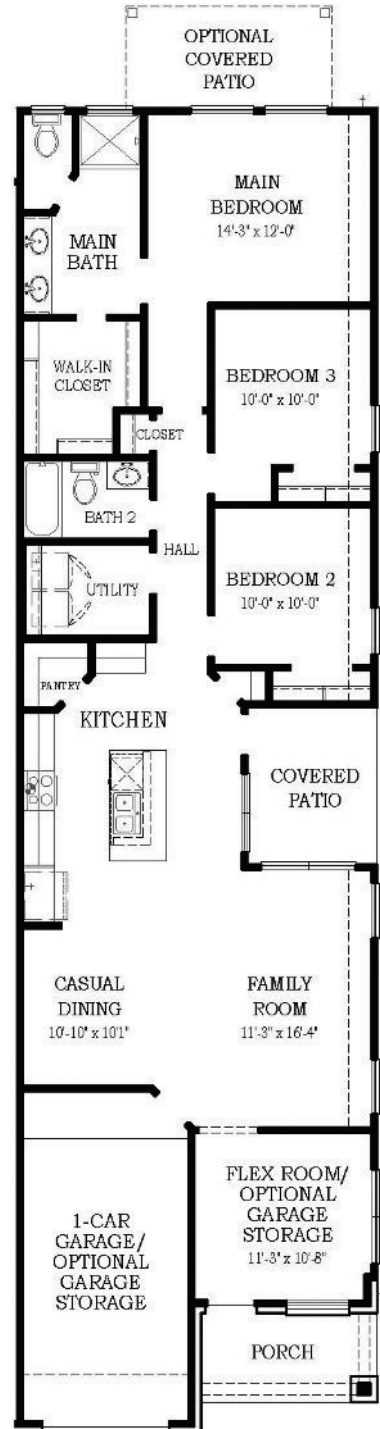
- 3 Bedrooms
- 2 Baths
- 1-Car Attached Garage
- 5' Garage Extension
- Covered Patio



**OPTIONAL 5' GARAGE EXTENSION**



**OPTIONAL COVERED PATIO**



**FLOOR PLAN**