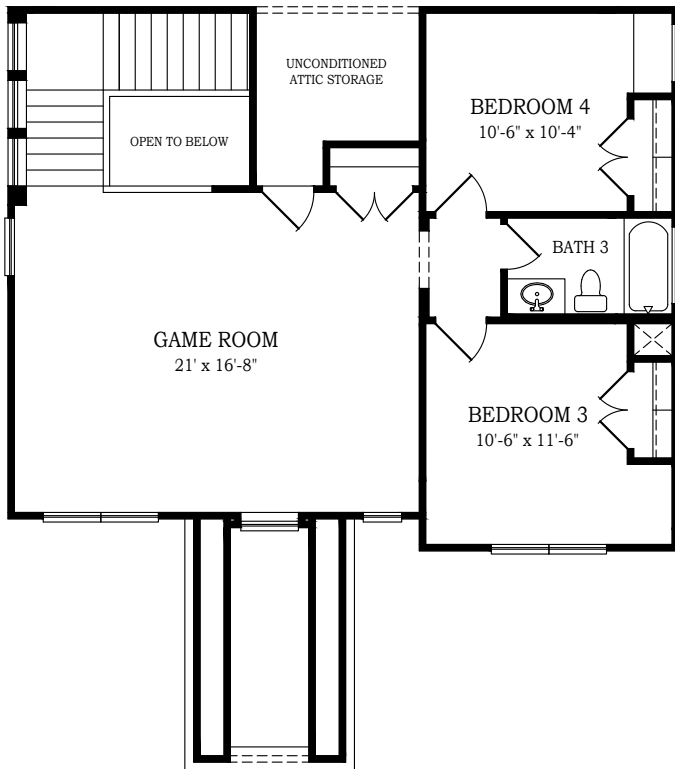




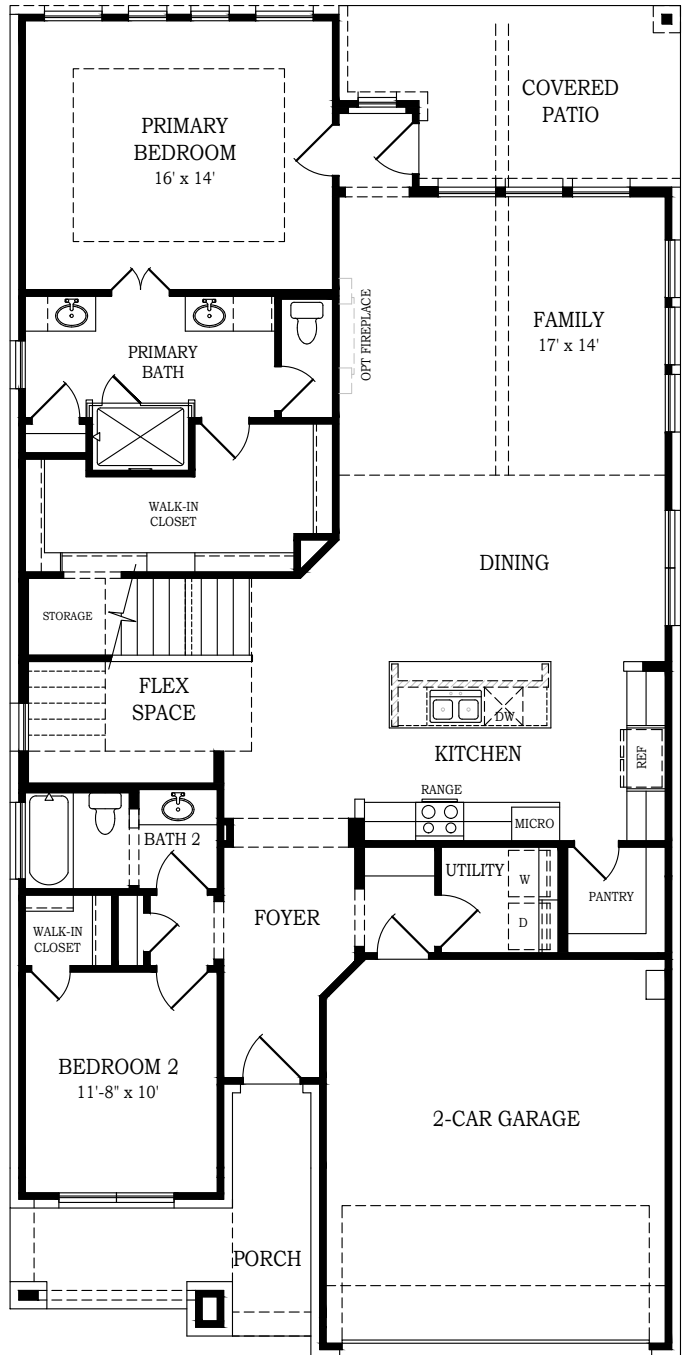
DAYTON

CHESMAR.com

Plan 252935 | 2529 Square Footage | 4 Bedrooms | 3 Baths | 2-Car Garage



2nd Floor Plan



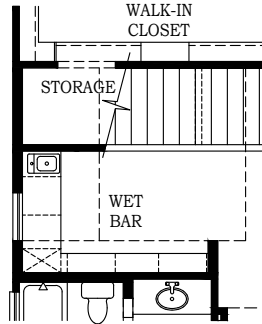
1st Floor Plan



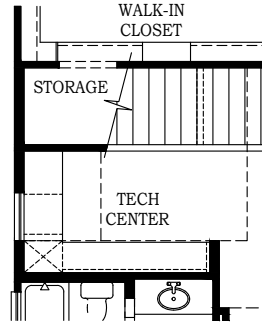
DAYTON

CHESMAR.com

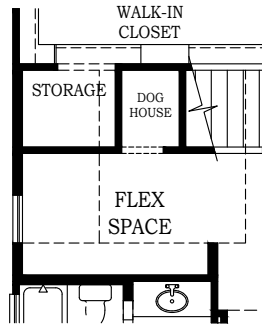
Plan 252935 | 2529 Square Footage | 4 Bedrooms | 3 Baths | 2-Car Garage



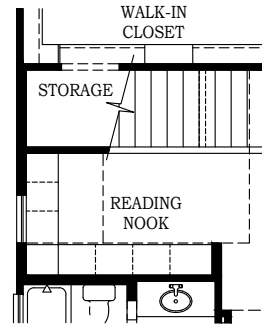
Opt. Wet Bar @Stairwell



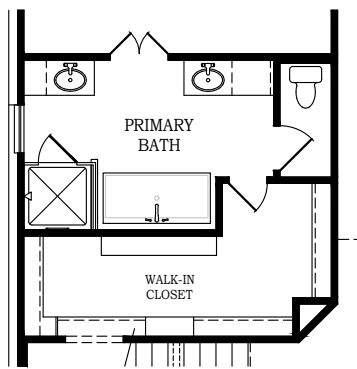
Opt. Tech Center @ Stairwell



Opt. Dog House @Stairwell



Opt. Reading Nook @Stairwell



Opt. Tub & Shower @ Primary Bath



Square footage and room dimensions are approximate and may vary per elevation. Window placement, roof line and porches may also vary by elevation. Plans, features, prices and availability are subject to change without notice. VERSION 1.0 5/14/25 (CT)



Setting a Higher Standard



DAYTON

CHESMAR.com

Plan 252935 | 2529 Square Footage | 4 Bedrooms | 3 Baths | 2-Car Garage



FRONT ELEVATION 'A2'



FRONT ELEVATION 'B2'



FRONT ELEVATION 'C2'



Square footage and room dimensions are approximate and may vary per elevation. Window placement, roof line and porches may also vary by elevation. Plans, features, prices and availability are subject to change without notice. VERSION 1.0 5/14/25 (CT)

**CHESMAR
HOMES**
Setting a Higher Standard