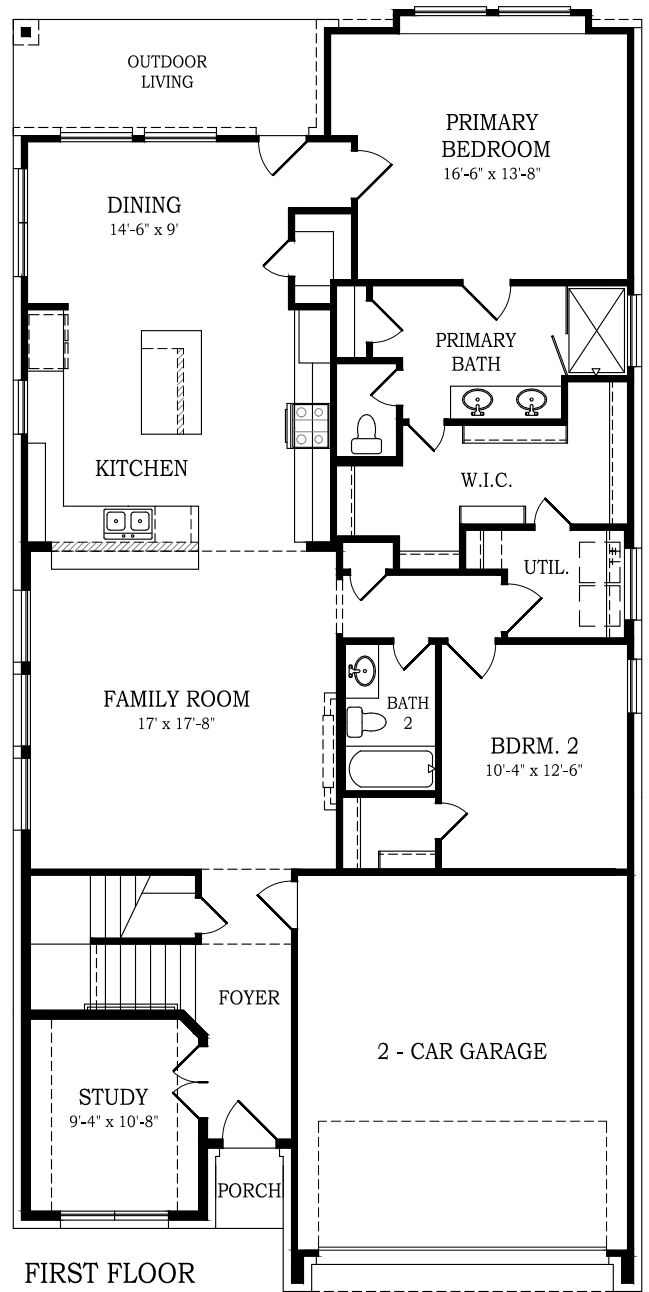
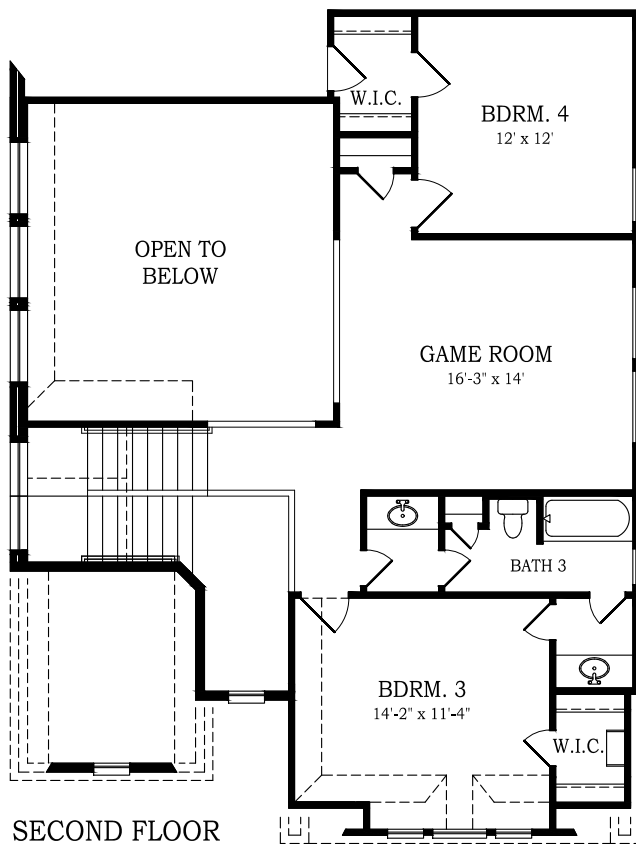




LARAMIE

CHESMAR.com

Plan 267135 | 2671 Square Footage | 4 Bedrooms | 3 Baths | 2-Car Garage



ADDITIONAL APPLIANCE
OPTIONS AVAILABLE PER
COMMUNITY

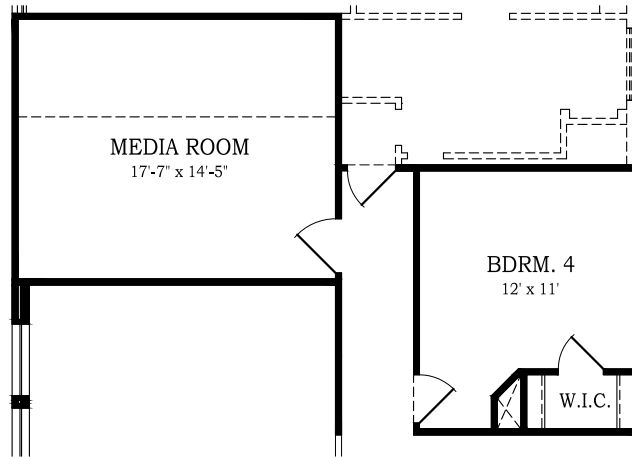




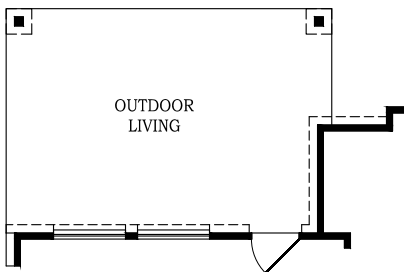
LARAMIE

CHESMAR.com

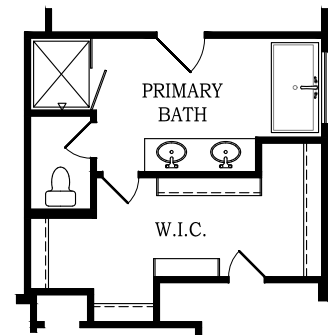
Plan 267135 | 2671 Square Footage | 4 Bedrooms | 3 Baths | 2-Car Garage



OPT. MEDIA ROOM



OPT. EXTENDED PATIO



PRIMARY BATH w/ OPT. TUB

ADDITIONAL APPLIANCE
OPTIONS AVAILABLE PER
COMMUNITY





LARAMIE

CHESMAR.com

Plan 267135 | 2671 Square Footage | 4 Bedrooms | 3 Baths | 2-Car Garage



FRONT ELEVATION 'A2'



FRONT ELEVATION 'B2'



FRONT ELEVATION 'C2'



Square footage and room dimensions are approximate and may vary per elevation. Window placement, roof line and porches may also vary by elevation. Plans, features, prices and availability are subject to change without notice. 8/12/24



LARAMIE

CHESMAR.com

Plan 267135 | 2671 Square Footage | 4 Bedrooms | 3 Baths | 2-Car Garage



FRONT ELEVATION 'A2'
STUCCO OPTION



FRONT ELEVATION 'B2'
STUCCO OPTION



Square footage and room dimensions are approximate and may vary per elevation. Window placement, roof line and porches may also vary by elevation. Plans, features, prices and availability are subject to change without notice. 8/12/24