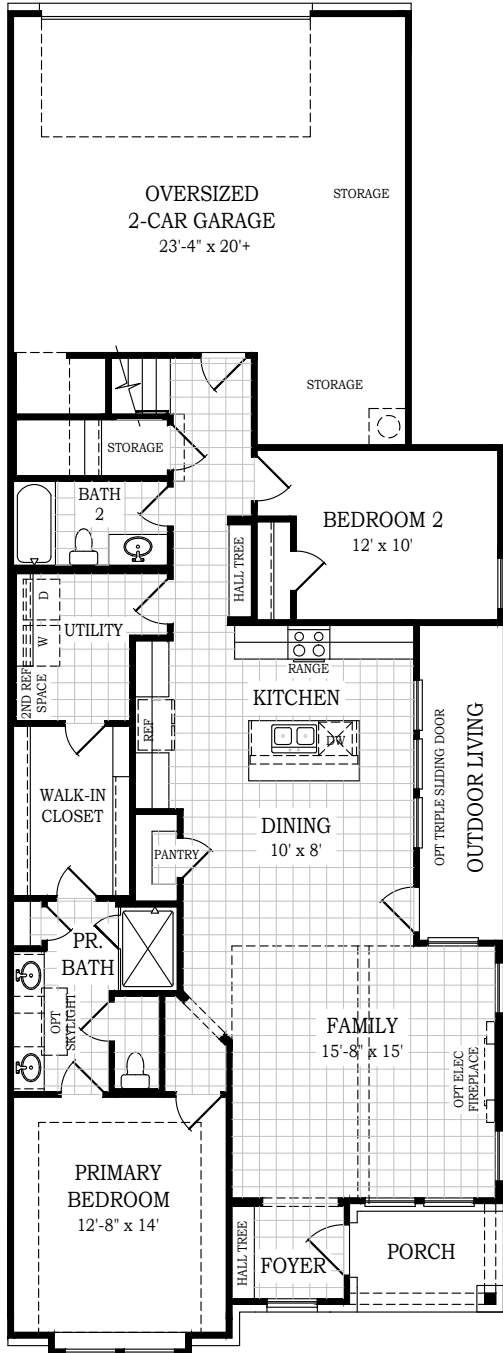




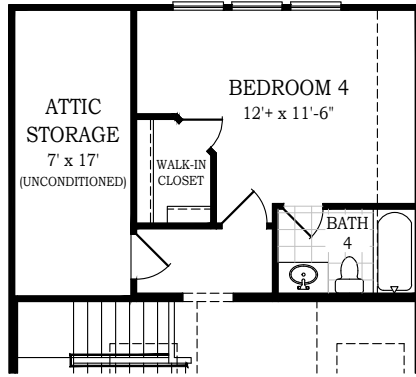
RYKER

CHESMAR.com

Plan 2091 | 2,091-2,471 Living sq. ft. | 3-4 Bedrooms | 3-4.5 Baths | 2-Car Garage

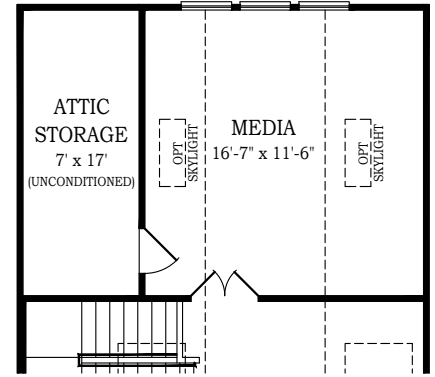


1st Floor Plan



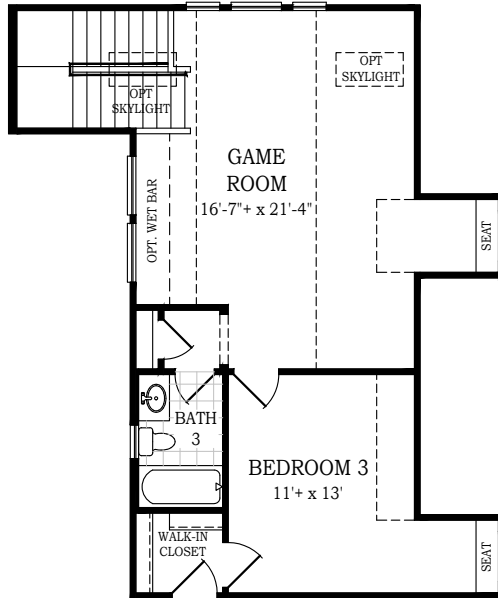
Opt. Bedroom 4/Bath 4

+299 s.f. living (2390 s.f. total)

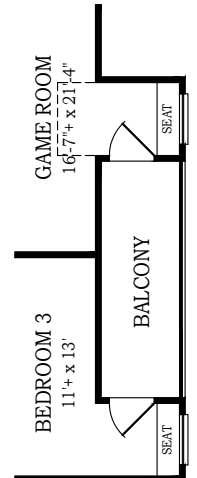


Opt. Media

+299 s.f. living (2390 s.f. total)

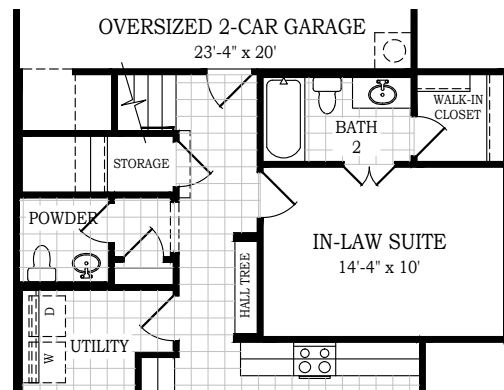


2nd Floor Plan



Opt. Balcony

+70 s.f. outdoor living



Opt. In-Law Suite & Powder

+81 s.f. living (2172 s.f. total)

Square footage and room dimensions are approximate and may vary per elevation. Window placement, roof line and porches may also vary by elevation. Plans, features, prices and availability are subject to change without notice. 9/24/24 V1.0 (SA)



Setting a Higher Standard



RYKER

CHESMAR.com

Plan 2091 | 2,091-2,471 Living sq. ft. | 3-4 Bedrooms | 3-4.5 Baths | 2-Car Garage



Elevation A



Elevation B



Square footage and room dimensions are approximate and may vary per elevation. Window placement, roof line and porches may also vary by elevation. Plans, features, prices and availability are subject to change without notice. 9/24/24 V1.0 (SA)