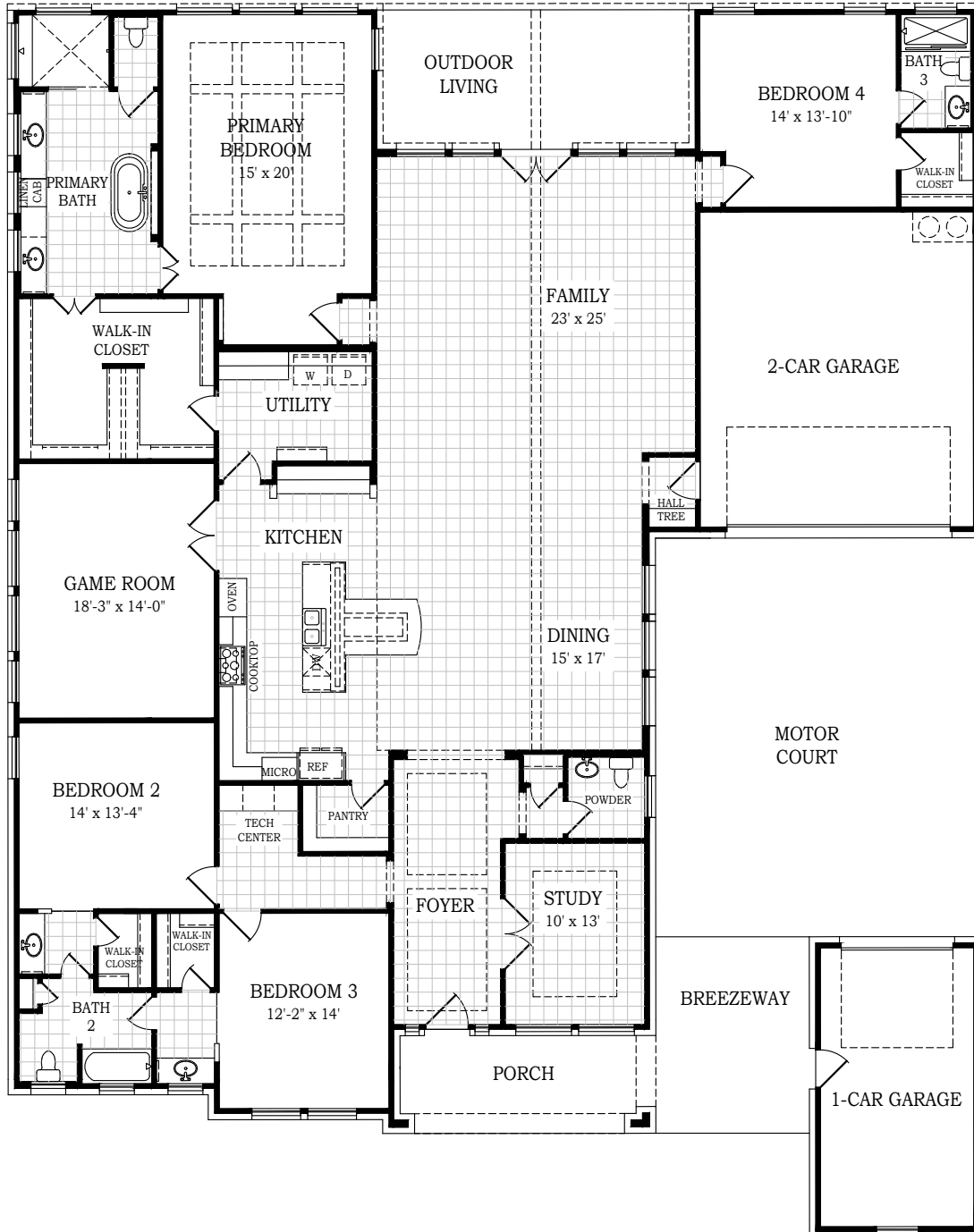




GREGORY

CHESMAR.com

Plan 3747 | 3,977 Living sq. ft. | 3,747 Conditioned sq. ft. | 4 Bedrooms | 3.5 Baths | 3-Car Garage



Square footage and room dimensions are approximate and may vary per elevation. Window placement, roof line and porches may also vary by elevation. Plans, features, prices and availability are subject to change without notice. 12/19/23 V7.0 (SA)



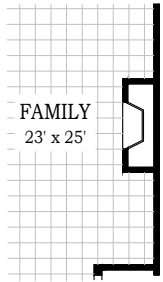
Setting a Higher Standard



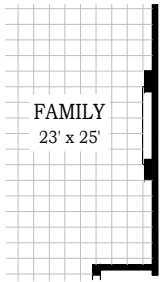
GREGORY

CHESMAR.com

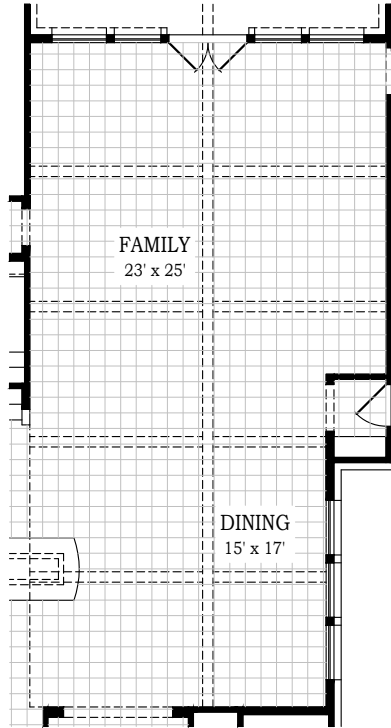
Plan 3747 | 3,977 Living sq. ft. | 3,747 Conditioned sq. ft. | 4 Bedrooms | 3.5 Baths | 3-Car Garage



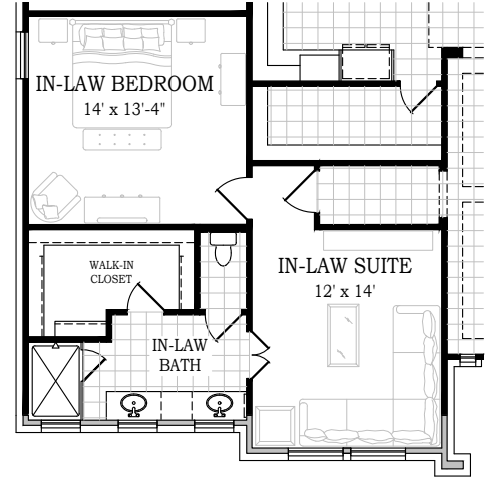
Opt. Fireplace @ Family



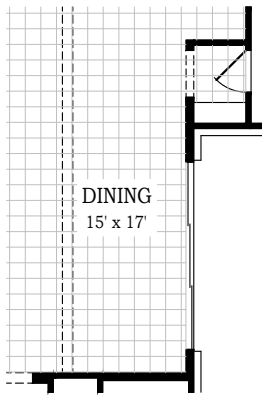
Opt. Electric Fireplace @ Family



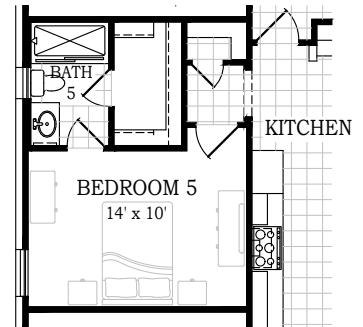
Opt. Faux Ceiling Beams



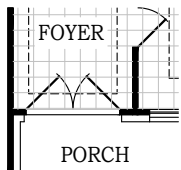
Opt. In-Law Suite



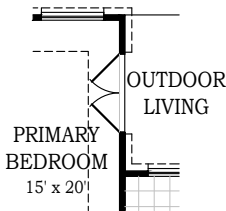
Opt. Triple Sliding Door @ Dining



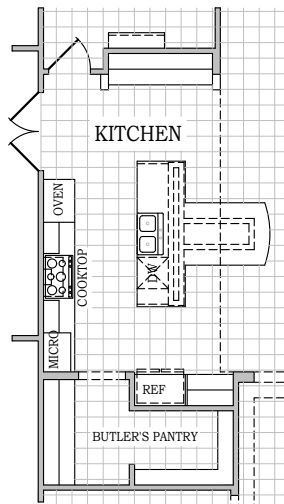
Opt. Bedroom 5 & Bath 5



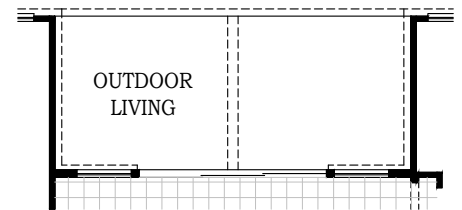
Opt. Double Front Doors



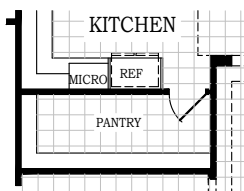
Opt. Double Doors @ Primary Bedroom



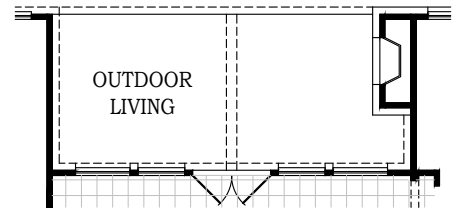
Opt. Butler's Pantry



Opt. Triple Sliding Door @ Family



Opt. Expanded Pantry



Opt. Fireplace @ Outdoor Living



Square footage and room dimensions are approximate and may vary per elevation. Window placement, roof line and porches may also vary by elevation. Plans, features, prices and availability are subject to change without notice. 12/19/23 V7.0 (SA)



Setting a Higher Standard



GREGORY

CHESMAR.com

Plan 3747 | 3,977 Living sq. ft. | 3,747 Conditioned sq. ft. | 4 Bedrooms | 3.5 Baths | 3-Car Garage



Elevation A



Elevation B



Elevation A1



Elevation B1



Elevation C



Elevation D