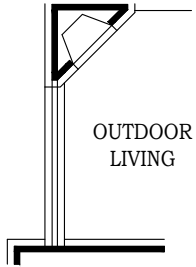




# MONTANA

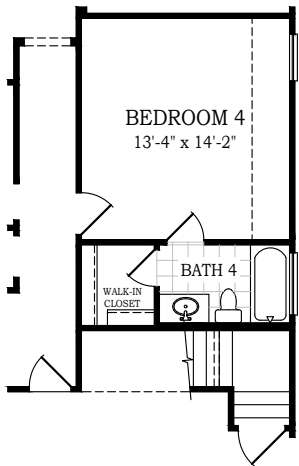
CHESMAR.com

Plan 3159 | 3,159 sq. ft. | 3 Bedrooms | 3.5 Baths | 3-Car Garage

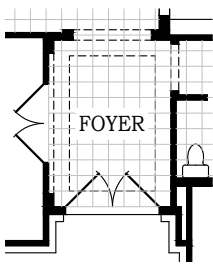


OUTDOOR LIVING

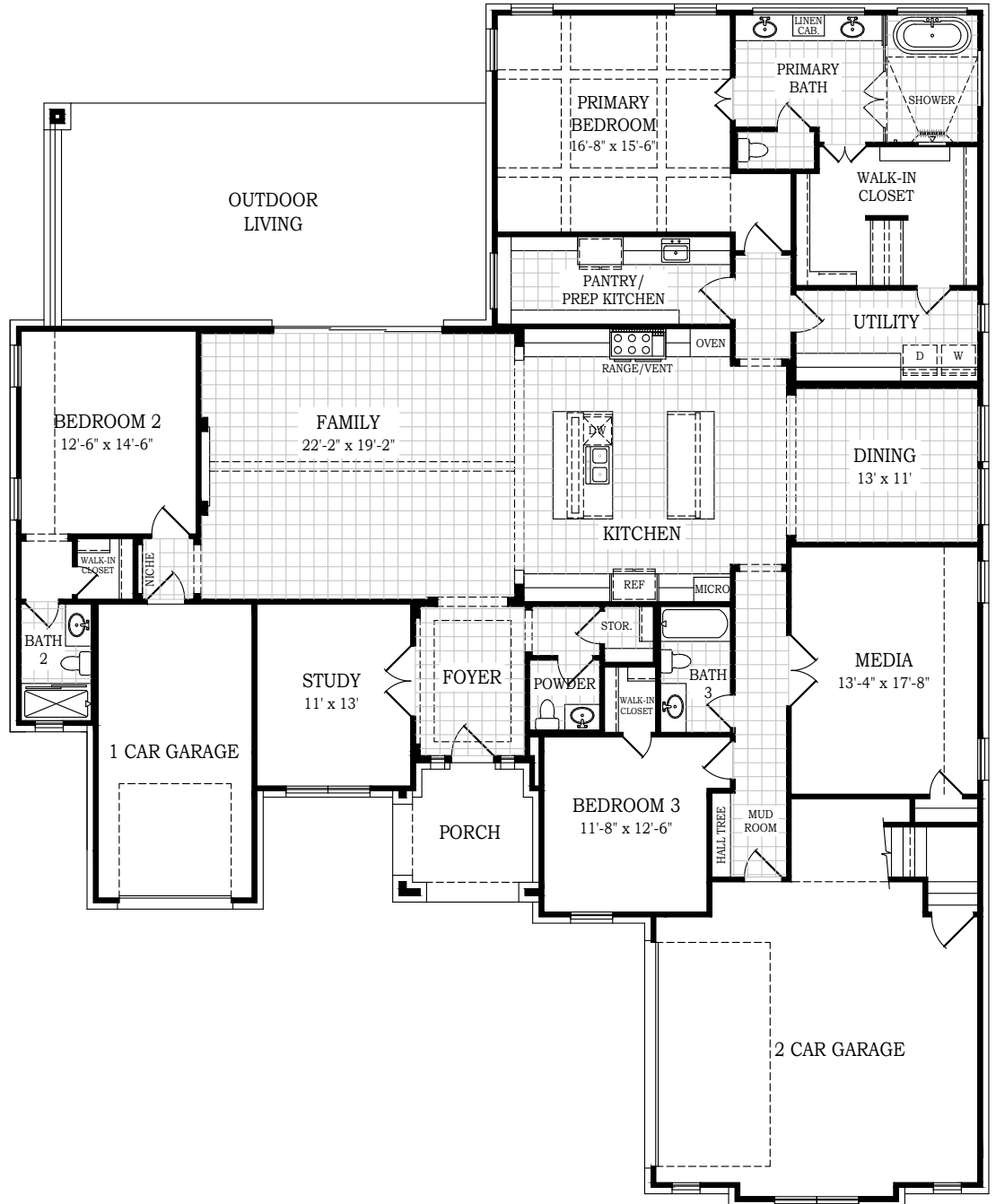
*Opt. Fireplace @  
Outdoor Living*



*Opt. Bedroom 4/  
Bath 4*



*Opt. Double  
Front Doors*



OUTDOOR LIVING

BEDROOM 4  
13'-4" x 14'-2"

BATH 4

BEDROOM 2  
12'-6" x 14'-6"

FAMILY  
22'-2" x 19'-2"

PANTRY/  
PREP KITCHEN

RANGE/VENT

KITCHEN

DINING  
13' x 11'

MEDIA  
13'-4" x 17'-8"

STUDY  
11' x 13'

FOYER

POWER

BEDROOM 3  
11'-8" x 12'-6"

BATH 3

1 CAR GARAGE

PORCH

HALL TREE

MUD ROOM

2 CAR GARAGE

PRIMARY  
BEDROOM  
16'-8" x 15'-6"

PRIMARY  
BATH

WALK-IN  
CLOSET

UTILITY

D W

DINING  
13' x 11'

MEDIA  
13'-4" x 17'-8"

STUDY  
11' x 13'

FOYER

POWER

BEDROOM 3  
11'-8" x 12'-6"

BATH 3

1 CAR GARAGE

PORCH

HALL TREE

MUD ROOM

2 CAR GARAGE

PRIMARY  
BEDROOM  
16'-8" x 15'-6"

PRIMARY  
BATH

WALK-IN  
CLOSET

UTILITY

D W

DINING  
13' x 11'

MEDIA  
13'-4" x 17'-8"

STUDY  
11' x 13'

FOYER

POWER

BEDROOM 3  
11'-8" x 12'-6"

BATH 3

1 CAR GARAGE

PORCH

HALL TREE

MUD ROOM

2 CAR GARAGE



Square footage and room dimensions are approximate and may vary per elevation. Window placement, roof line and porches may also vary by elevation. Plans, features, prices and availability are subject to change without notice. 6/26/25 V2.0



Setting a Higher Standard



# MONTANA

CHESMAR.com

Plan 3159 | 3,159 sq. ft. | 3 Bedrooms | 3.5 Baths | 3-Car Garage



*Elevation A*



Square footage and room dimensions are approximate and may vary per elevation. Window placement, roof line and porches may also vary by elevation. Plans, features, prices and availability are subject to change without notice. 6/26/25 V2.0