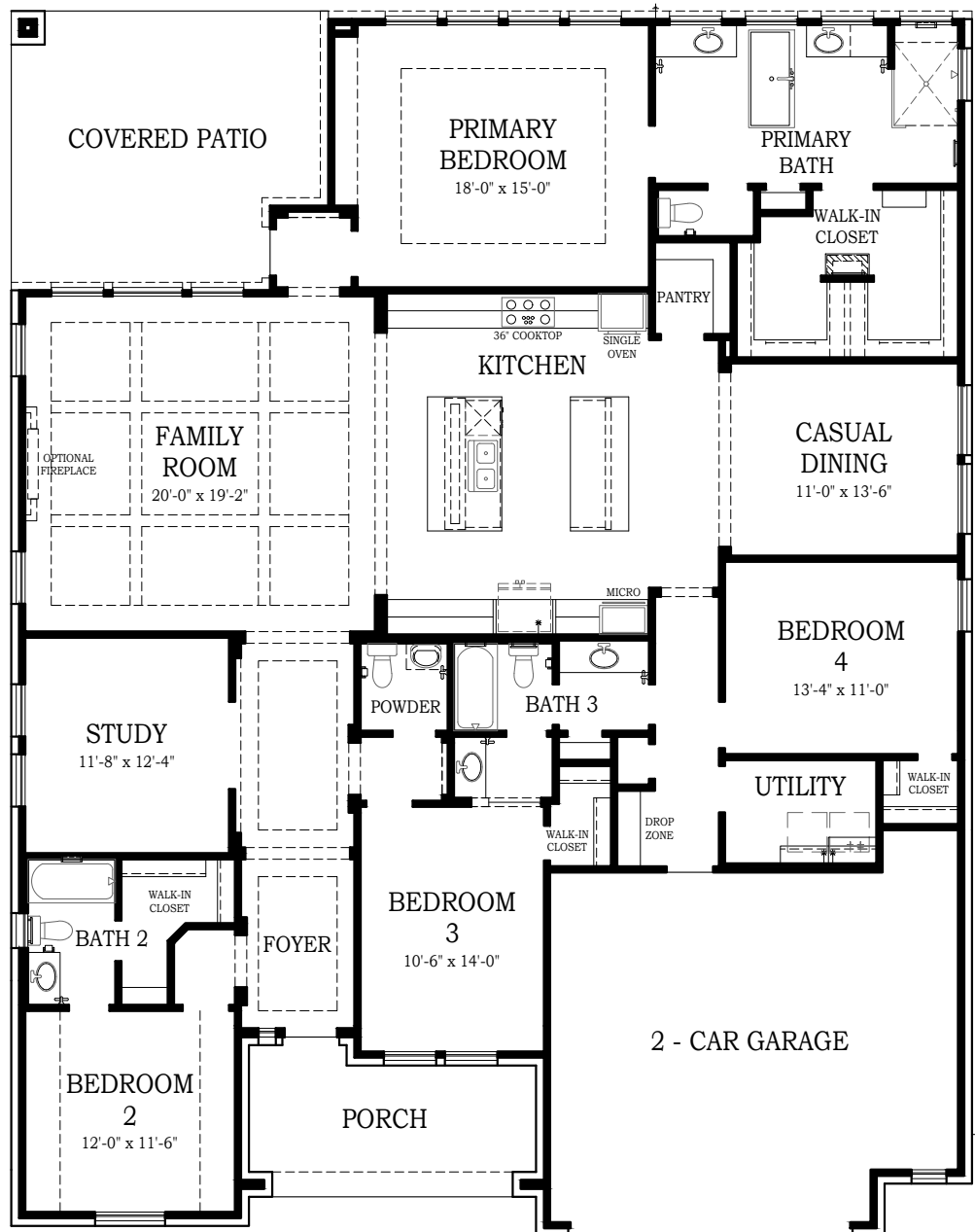




ASHEVILLE

CHESMAR.com

Plan 285955 | 2859 Square Footage | 4 Bedrooms | 3.5 Baths | 2-Car Garage



FIRST FLOOR

ADDITIONAL APPLIANCE
OPTIONS AVAILABLE PER
COMMUNITY



Square footage and room dimensions are approximate and may vary per elevation. Window placement, roof line and porches may also vary by elevation. Plans, features, prices and availability are subject to change without notice. 10/08/24



Setting a Higher Standard



ASHEVILLE

CHESMAR.com

Plan 285955 | 2859 Square Footage | 4 Bedrooms | 3.5 Baths | 2-Car Garage




FRONT ELEVATION 'A1'



FRONT ELEVATION 'A1'
STONE OPTION



FRONT ELEVATION 'A1'
STUCCO & BRICK OPTION

 Square footage and room dimensions are approximate and may vary per elevation. Window placement, roof line and porches may also vary by elevation. Plans, features, prices and availability are subject to change without notice. 8/12/24



ASHEVILLE

CHESMAR.com

Plan 285955 | 2859 Square Footage | 4 Bedrooms | 3.5 Baths | 2-Car Garage



FRONT ELEVATION 'B1'



FRONT ELEVATION 'B1'
STONE OPTION



Square footage and room dimensions are approximate and may vary per elevation. Window placement, roof line and porches may also vary by elevation. Plans, features, prices and availability are subject to change without notice. 8/12/24

**CHESMAR
HOMES**
Setting a Higher Standard



ASHEVILLE

CHESMAR.com

Plan 285955 | 2859 Square Footage | 4 Bedrooms | 3.5 Baths | 2-Car Garage



FRONT ELEVATION 'C1'



FRONT ELEVATION 'C1'
STONE OPTION



Square footage and room dimensions are approximate and may vary per elevation. Window placement, roof line and porches may also vary by elevation. Plans, features, prices and availability are subject to change without notice. 8/12/24

**CHESMAR
HOMES**
Setting a Higher Standard