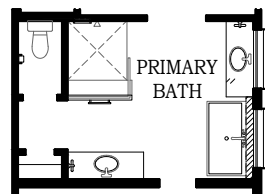
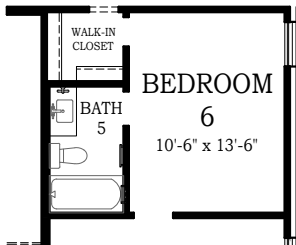
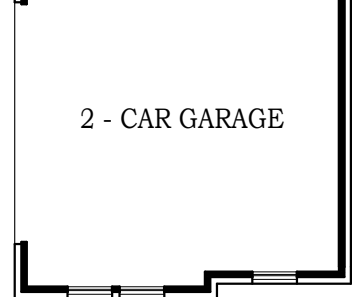
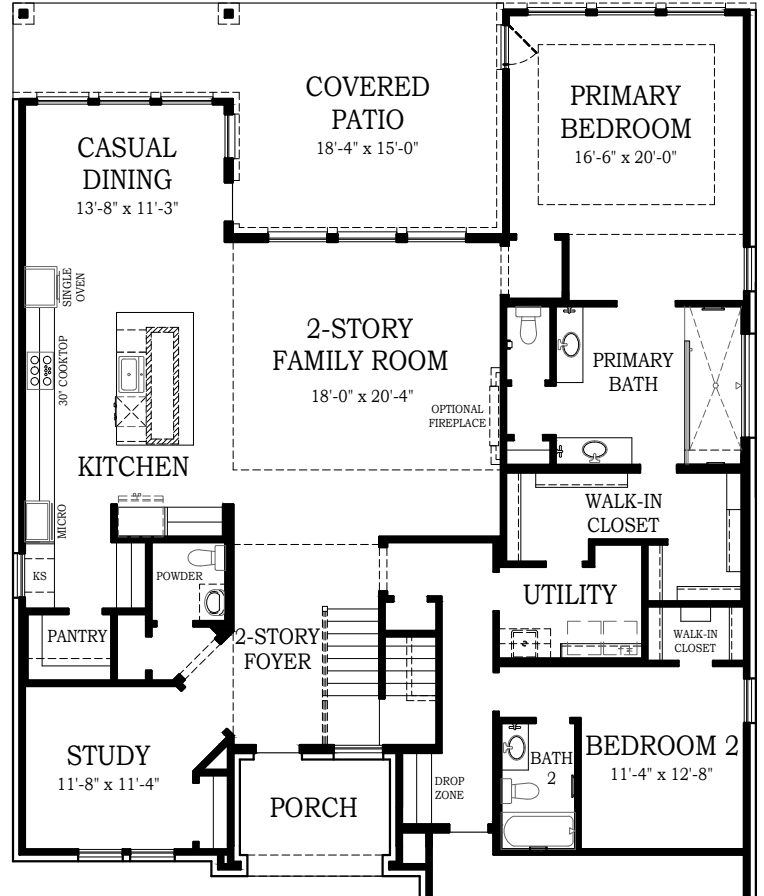
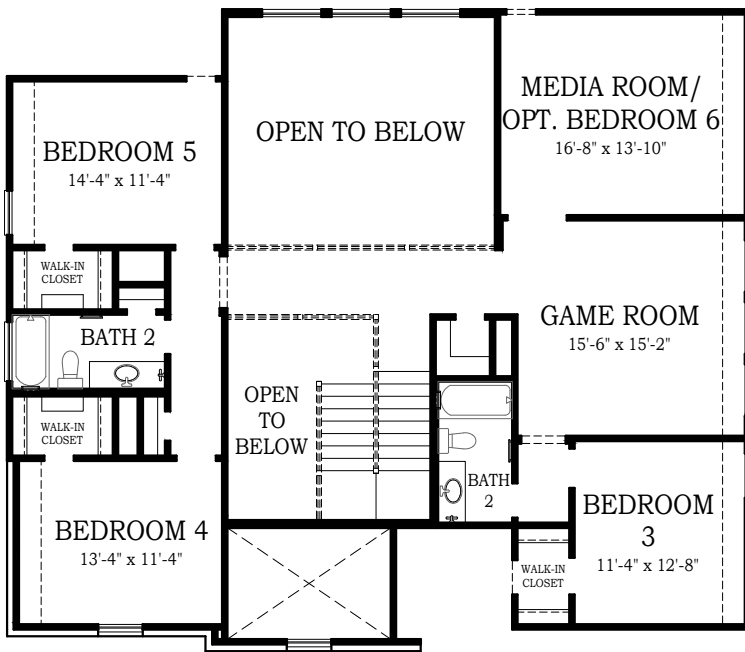




DURBAN

CHESMAR.com

Plan 381450 | 3814 Square Footage | 5 Bedrooms | 4.5 Baths | 2-Car Garage



ADDITIONAL APPLIANCE
OPTIONS AVAILABLE PER
COMMUNITY



DURBAN

CHESMAR.com

Plan 381450 | 3814 Square Footage | 5 Bedrooms | 4.5 Baths | 2-Car Garage



FRONT ELEVATION 'A1'



FRONT ELEVATION 'A1'
STONE OPTION



Square footage and room dimensions are approximate and may vary per elevation. Window placement, roof line and porches may also vary by elevation. Plans, features, prices and availability are subject to change without notice. 8/12/24

**CHESMAR
HOMES**
Setting a Higher Standard



DURBAN

CHESMAR.com

Plan 381450 | 3814 Square Footage | 5 Bedrooms | 4.5 Baths | 2-Car Garage



FRONT ELEVATION 'B1'



FRONT ELEVATION 'B1'
STONE OPTION



Square footage and room dimensions are approximate and may vary per elevation. Window placement, roof line and porches may also vary by elevation. Plans, features, prices and availability are subject to change without notice. 8/12/24

**CHESMAR
HOMES**
Setting a Higher Standard



DURBAN

CHESMAR.com

Plan 381450 | 3814 Square Footage | 5 Bedrooms | 4.5 Baths | 2-Car Garage



FRONT ELEVATION 'C1'



Square footage and room dimensions are approximate and may vary per elevation. Window placement, roof line and porches may also vary by elevation. Plans, features, prices and availability are subject to change without notice. 8/12/24