

# CHESMAR HOMES

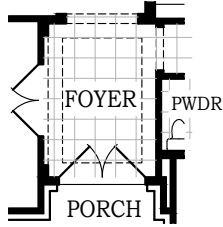
Setting a Higher Standard

Plan 3093

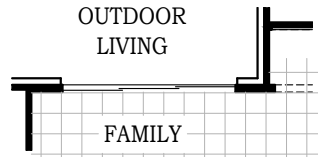
Nicosa

3093 sq. ft. - Living

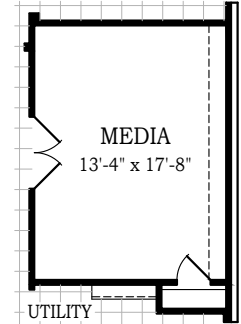
417 sq. ft. - Outdoor Living



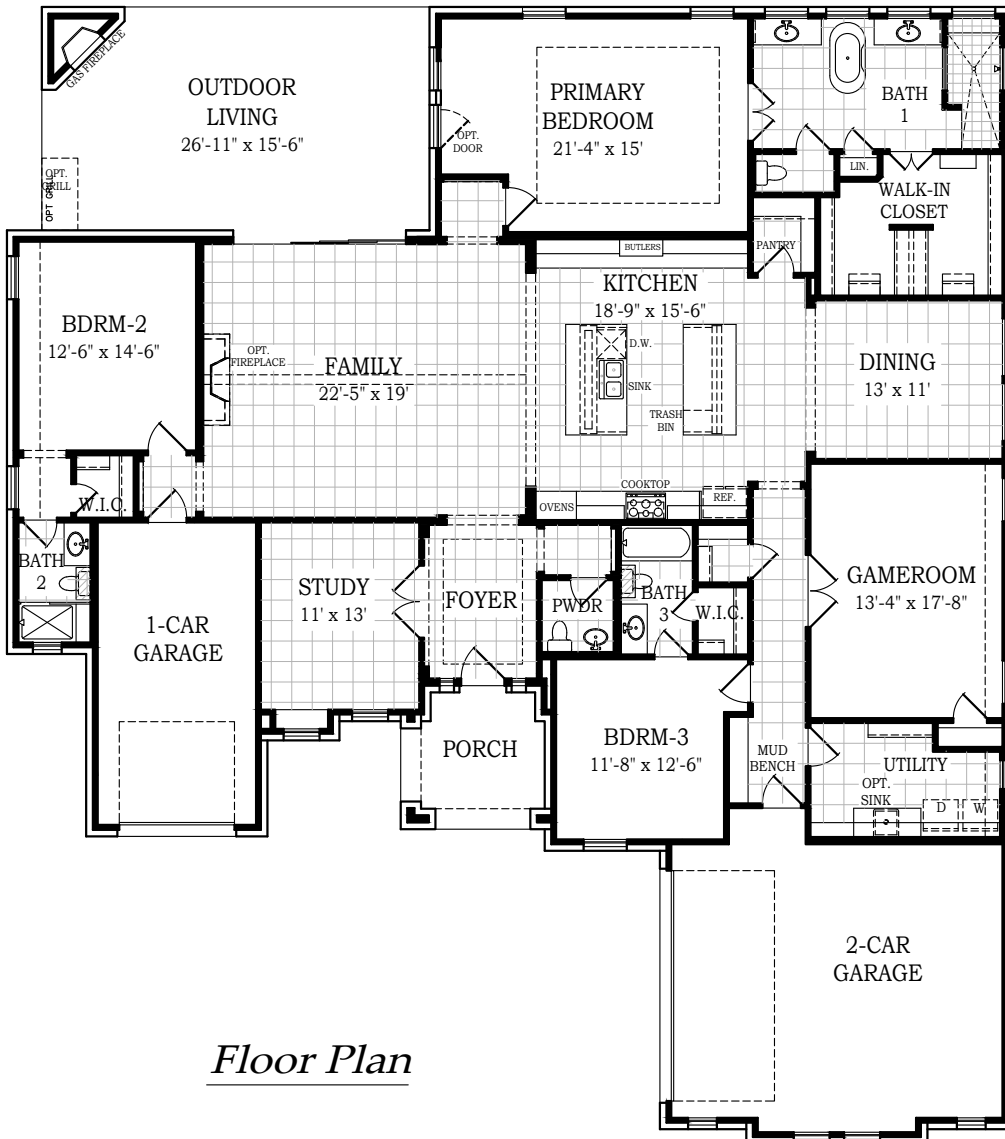
*Opt. Double Front Doors*



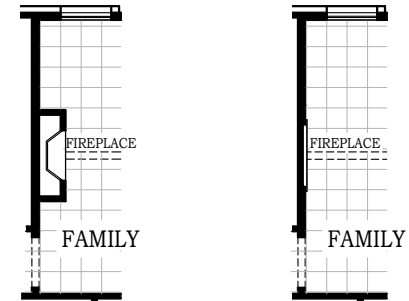
*Opt. Sliding Door*



*Opt. Media Room  
ILO Game Room*

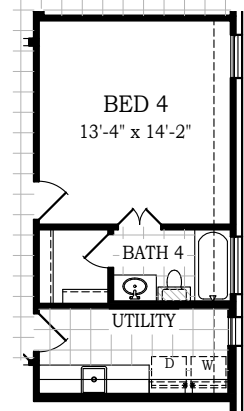


*Floor Plan*



*Opt. Gas Fireplace  
@Family*

*Opt. Elec Fireplace  
@Family*



*Opt. Bedroom 4 & Bath 4*

Square footage and room dimensions are approximate and may vary per elevation. Window placement, roof line and porches may also vary by elevation. Plans, features, prices and availability are subject to change without notice.

Print Date: 7/22/2024 (Lakeview Heights)