

Eagle Crest Ranch
FREMONT



Elevation A

Approx. square feet: 2,700

Stories: 2

Bedrooms: 4

Garage: 2-car

Plan Number: T269

If you love to entertain, the Fremont plan is a must-see. The kitchen opens to the great room and dining room, and offers an immense walk-in pantry and an island with double sinks. Gourmet features and a butler's pantry with sink are also available. A study, living room, covered patio and upstairs bedrooms complete the design.

Available elevations:



Elevation A



Elevation B



Elevation C - Shown with optional stone



COMMUNITY LOCATION

38976 South Easy Gallup Drive
Tucson, AZ 85739
877-346-8102

HOME GALLERY

3091 West Ina Road
Tucson, AZ 85741
877-346-8102



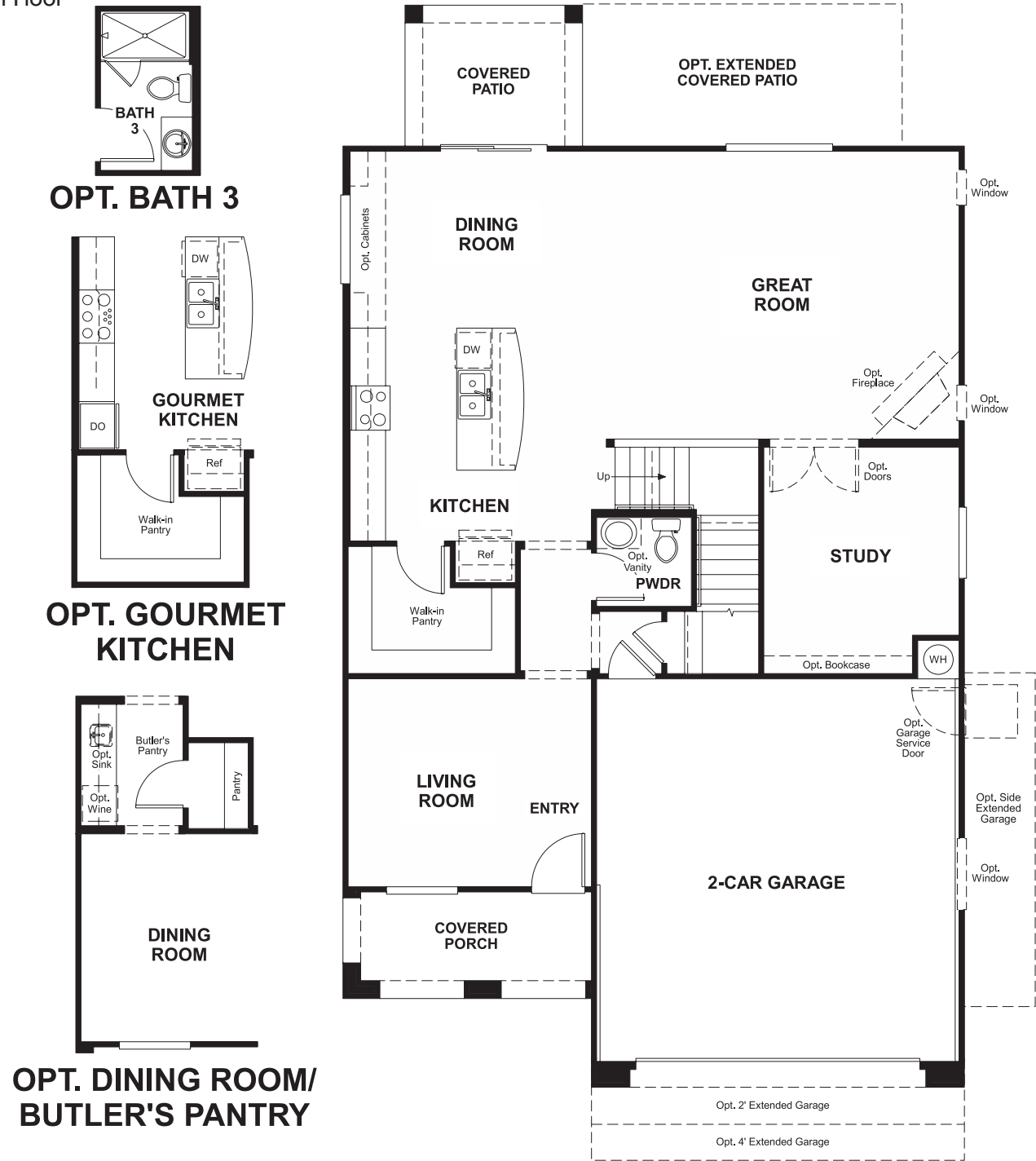
COMMUNITY LOCATION

38976 South Easy Gallup Drive
Tucson, AZ 85739
877-346-8102

HOME GALLERY

3091 West Ina Road
Tucson, AZ 85741
877-346-8102

Floor Plan
Main Floor



Floor Plan
Second Floor



**THIS PLAN'S PROJECTED
HERS® INDEX = 67***
Projected Rating Based on Plans – Field Confirmation Required

How does this floor plan rate?
Take a look: **100** = Standard new home* **130** = Typical resale home**
The lower the number, the better! Refer to the RESNET® HERS index brochure or go to www.RESNET.us for details.

What's a HERS® Index? HERS stands for Home Energy Rating System, a system created by RESNET® to measure home energy efficiency.[^]
A Projected HERS index or rating is a computer simulation performed prior to construction by a third-party HERS rater using RESNET-accredited rating software, rated feature and specification data derived from home plans, features and specifications, and other data selected or assumed by the rater. The projected HERS index is approximate and is subject to change without notice. Actual results will vary.

*This information is presented for education purposes only. The HERS index for a confirmed rating will be determined by a third-party HERS rater based on data gathered from on-site observations and, if required, testing of rated features for a home as featured, optioned, located, oriented and/or built.
+Standard new home is based on the RESNET® Reference Home deFREMONTition with a HERS® index of 100 (based on the 2006 International Energy Conservation Code).
++Typical resale home is based on the U.S. Department of Energy deFREMONTition with a HERS® index of 130.

[^]RESNET® has developed the HERS® index to indicate the comparative efficiencies of homes. It is no guarantee that energy efficiencies will be achieved.