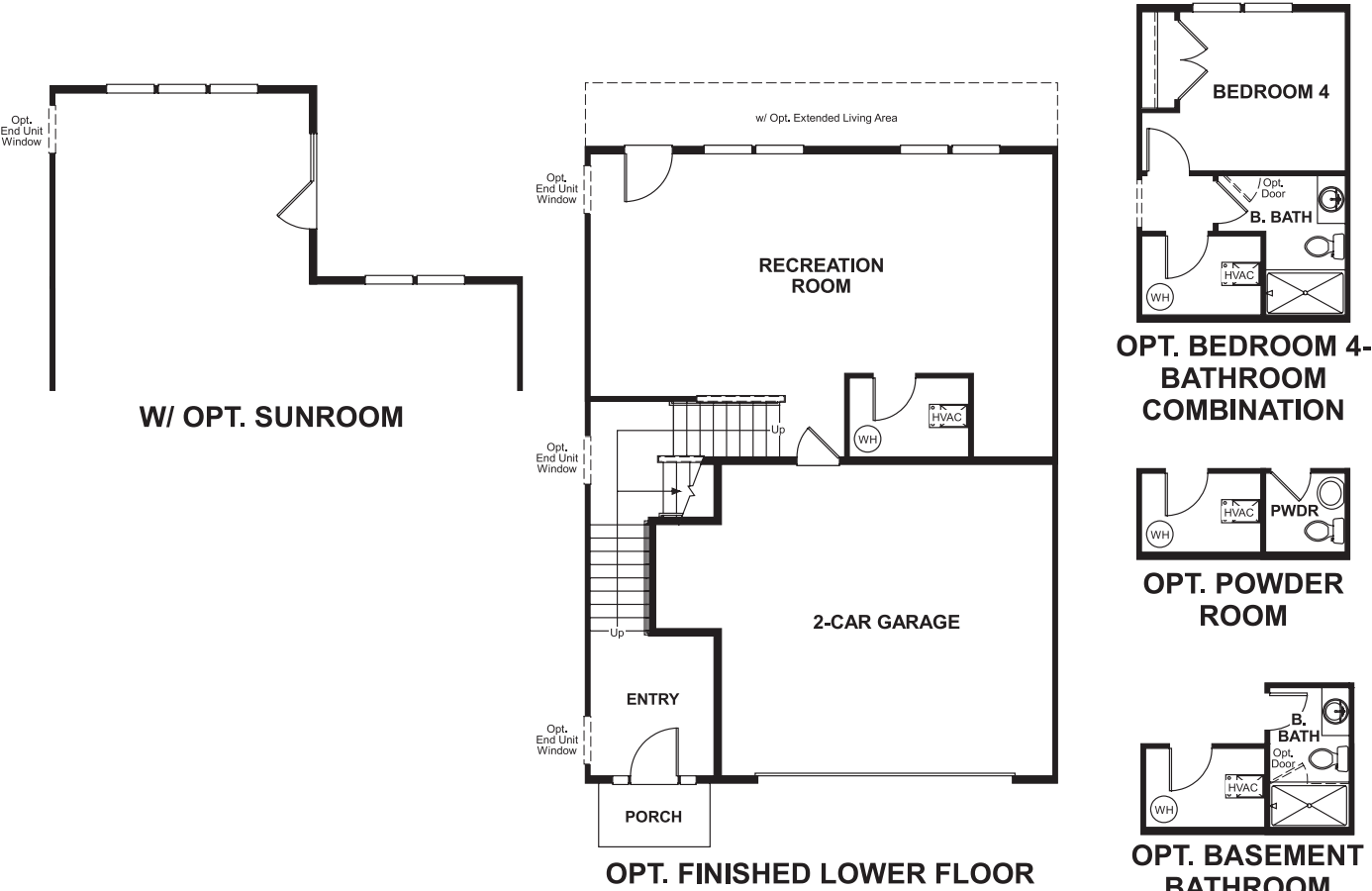


Villaggio Enclave
KELSEY

Approx. square feet: 2,500
Stories: 3
Bedrooms: 3 - 5

Garage: 2-car
Plan Number: M29K

Floor Plan
Lower Floor



COMMUNITY LOCATION
8130 Villaggio Drive
Millersville, MD 21108
410-312-2829

Floorplans and renderings are conceptual drawings and may vary from actual plans and homes as built. Options and features may not be available on all homes and are subject to change without notice. Actual homes may vary from photos and/or drawings which show upgraded landscaping and may not represent the lowest-priced homes in the community. Features may include optional upgrades and may not be available on all homes. Square footage numbers are approximate and are subject to change without notice. Prices, specifications and availability subject to change without notice. ©2017 Richmond American Homes, Richmond American Homes of Maryland, Inc., MHBR #299. 05/17/2017

Villaggio Enclave
KELSEY

Approx. square feet: 2,500
Stories: 3
Bedrooms: 3 - 5
Garage: 2-car
Plan Number: M29K

The main floor of the Kelsey plan offers an expansive great room, an optional gourmet kitchen with a breakfast bar and nook, and a convenient powder room. Upstairs, you'll find a laundry area and three generous bedrooms, including a relaxing master suite boasting a walk-in closet. Personalize this inviting townhome with an optional sunroom, study, loft, second master suite and more!



Elevation EB

Available elevations:



Elevation EB



Elevation EG



Elevation FC



Elevation DA

COMMUNITY LOCATION
8130 Villaggio Drive
Millersville, MD 21108
410-312-2829

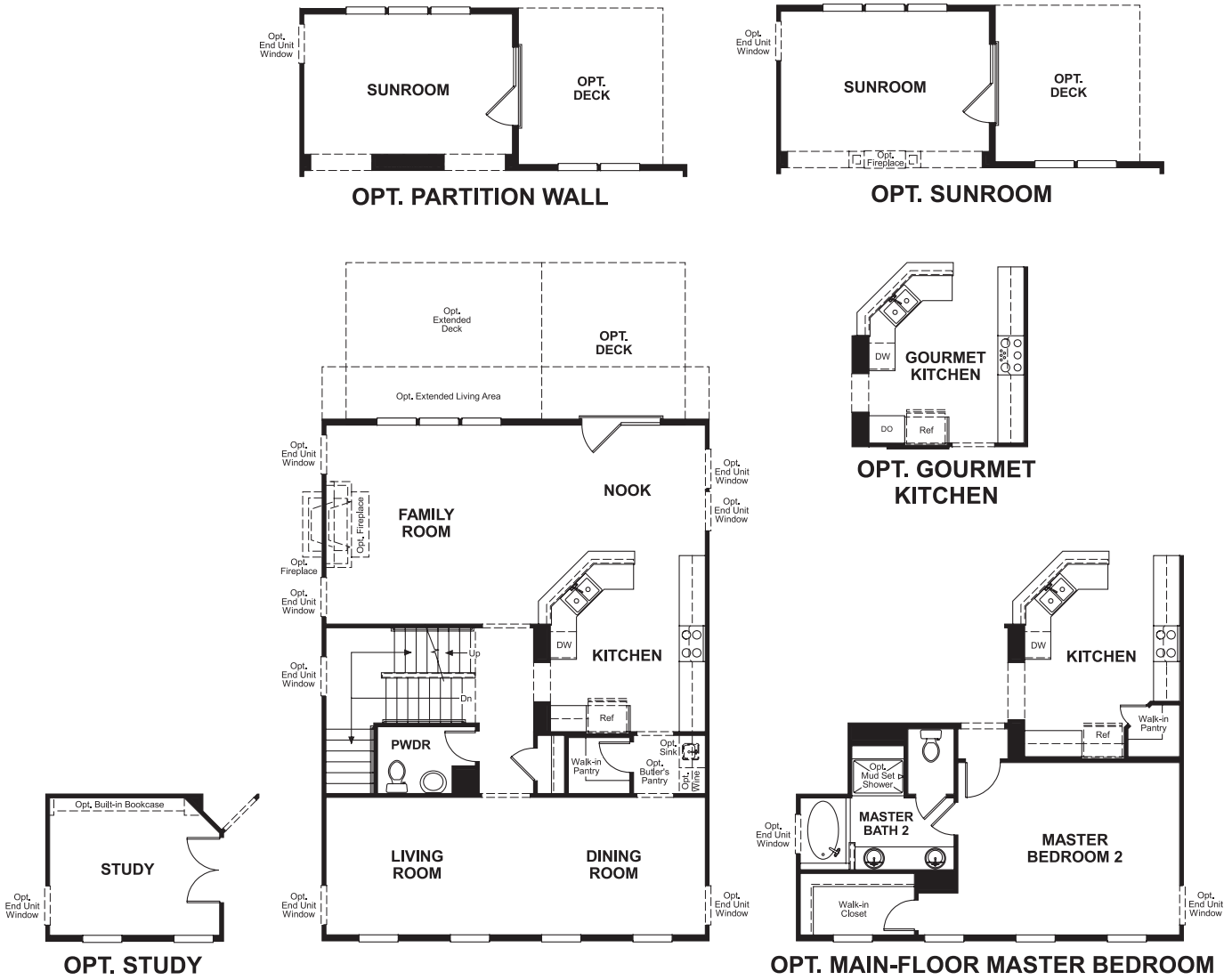
Floorplans and renderings are conceptual drawings and may vary from actual plans and homes as built. Options and features may not be available on all homes and are subject to change without notice. Actual homes may vary from photos and/or drawings which show upgraded landscaping and may not represent the lowest-priced homes in the community. Features may include optional upgrades and may not be available on all homes. Square footage numbers are approximate and are subject to change without notice. Prices, specifications and availability subject to change without notice. ©2017 Richmond American Homes, Richmond American Homes of Maryland, Inc., MHBR #299. 05/17/2017

Villaggio Enclave
KELSEY

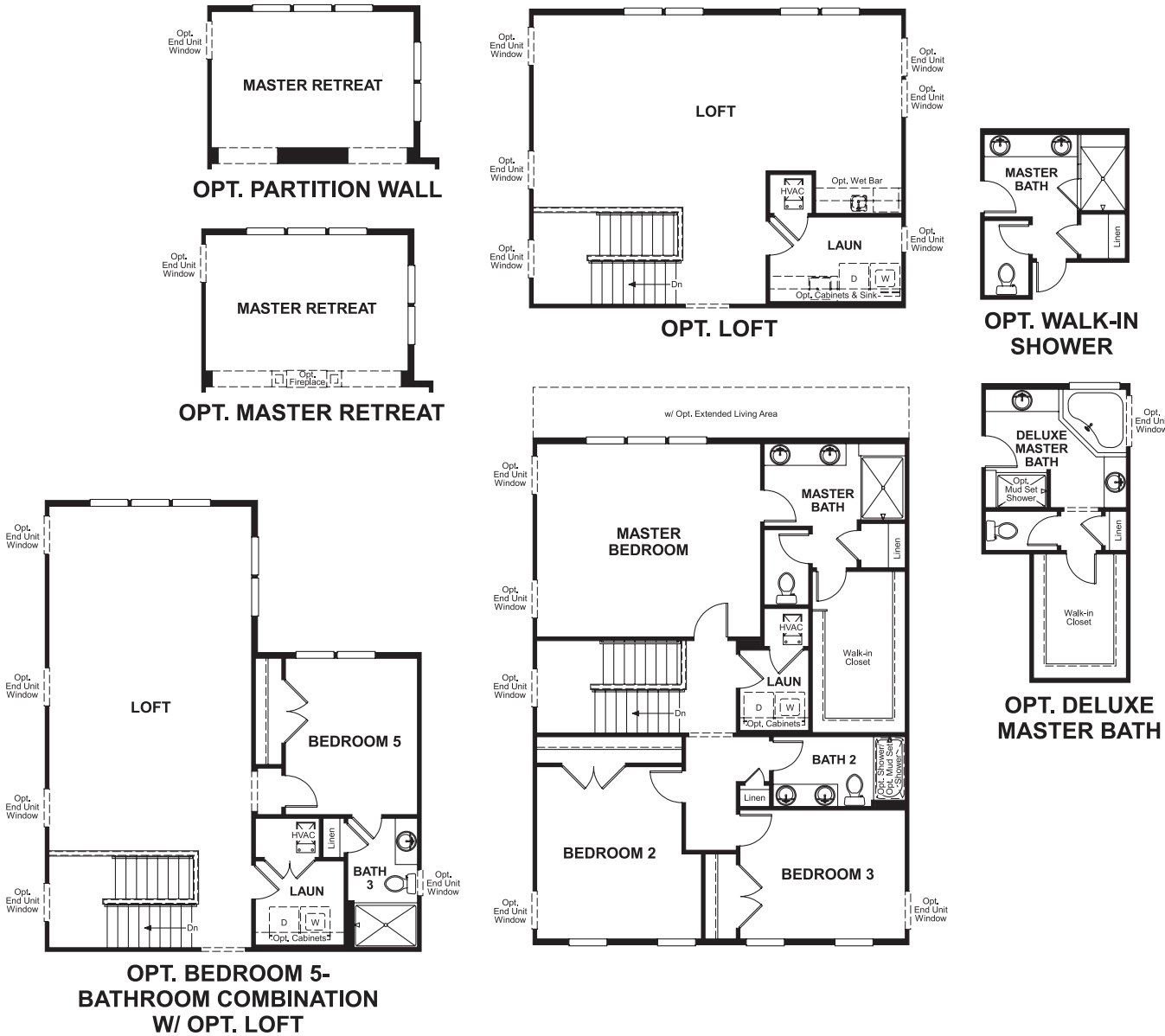
Approx. square feet: 2,500
Stories: 3
Bedrooms: 3 - 5

Garage: 2-car
Plan Number: M29K

Floor Plan
Main Floor



Floor Plan
Second Floor



**THIS PLAN'S PROJECTED
HERS® INDEX = 61 ***
Projected Rating Based on Plans – Field Confirmation Required

How does this floor plan rate?
Take a look: **100** = Standard new home* **130** = Typical resale home**
The lower the number, the better! Refer to the RESNET® HERS index brochure or go to www.RESNET.us for details.

What's a HERS® Index? HERS stands for Home Energy Rating System, a system created by RESNET® to measure home energy efficiency.^\nA Projected HERS index or rating is a computer simulation performed prior to construction by a third-party HERS rater using RESNET-accredited rating software, rated feature and specification data derived from home plans, features and specifications, and other data selected or assumed by the rater. The projected HERS index is approximate and is subject to change without notice. Actual results will vary.

*This information is presented for education purposes only. The HERS index for a confirmed rating will be determined by a third-party HERS rater based on data gathered from on-site observations and, if required, testing of rated features for a home as featured, optioned, located, oriented and/or built.
+Standard new home is based on the RESNET® Reference Home definition with a HERS® index of 100 (based on the 2006 International Energy Conservation Code).
++Typical resale home is based on the U.S. Department of Energy definition with a HERS® index of 130.

^RESNET® has developed the HERS® index to indicate the comparative efficiencies of homes. It is no guarantee that energy efficiencies will be achieved.