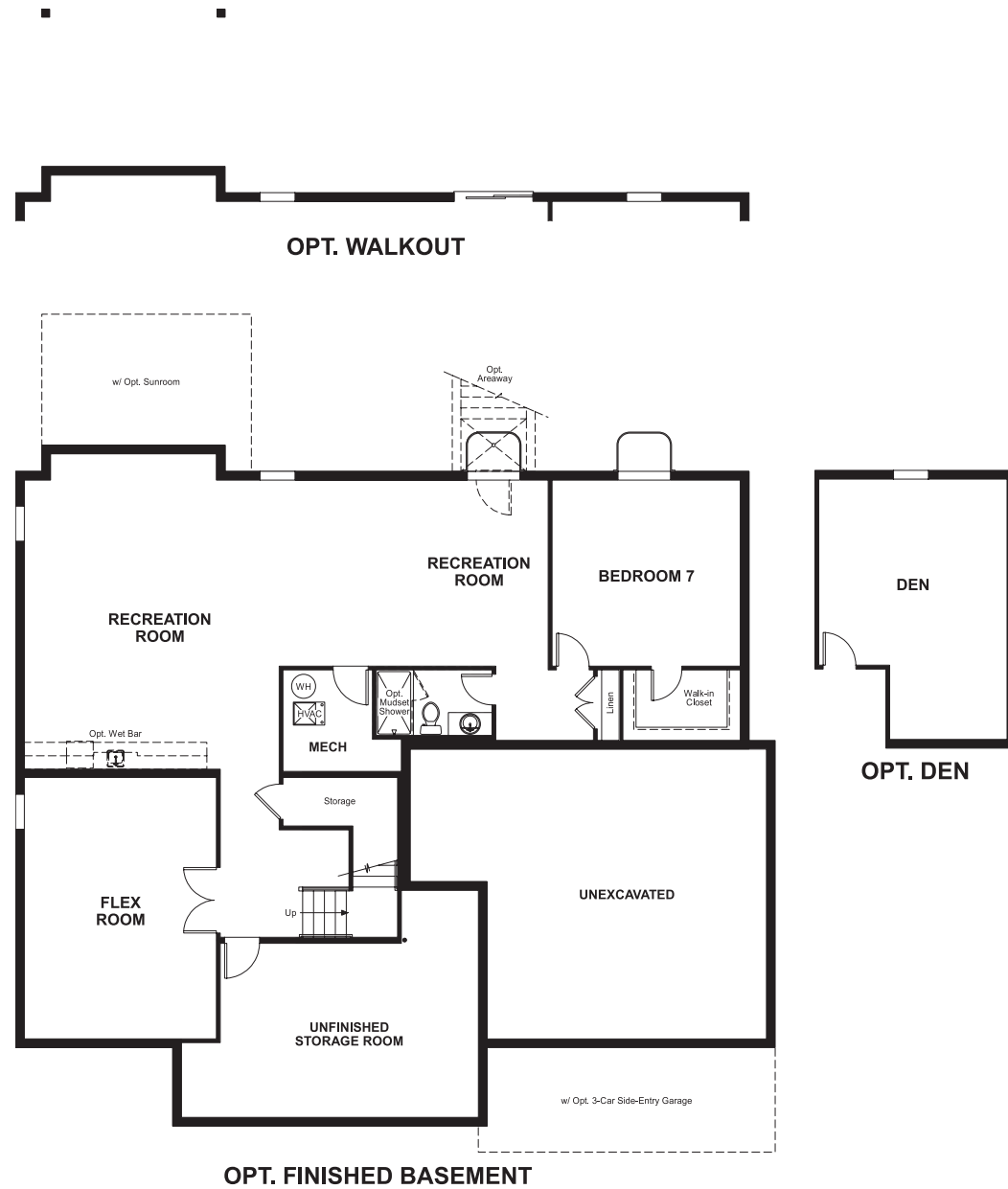


## BASEMENT



ELEVATION F

### ABOUT THE HANCOCK

This stately home with front porch features a bedroom with full bath on the main floor. In addition, it has a private study, formal dining room, a light filled great room, gourmet kitchen with up to 7 bedrooms available! The master bedroom with luxury bath features a walk-in closet with available dressing table.



ELEVATION A



ELEVATION B



ELEVATION C



ELEVATION D



ELEVATION E

### COMMUNITY LOCATION:

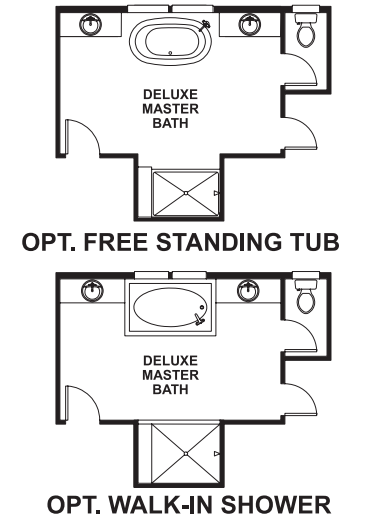
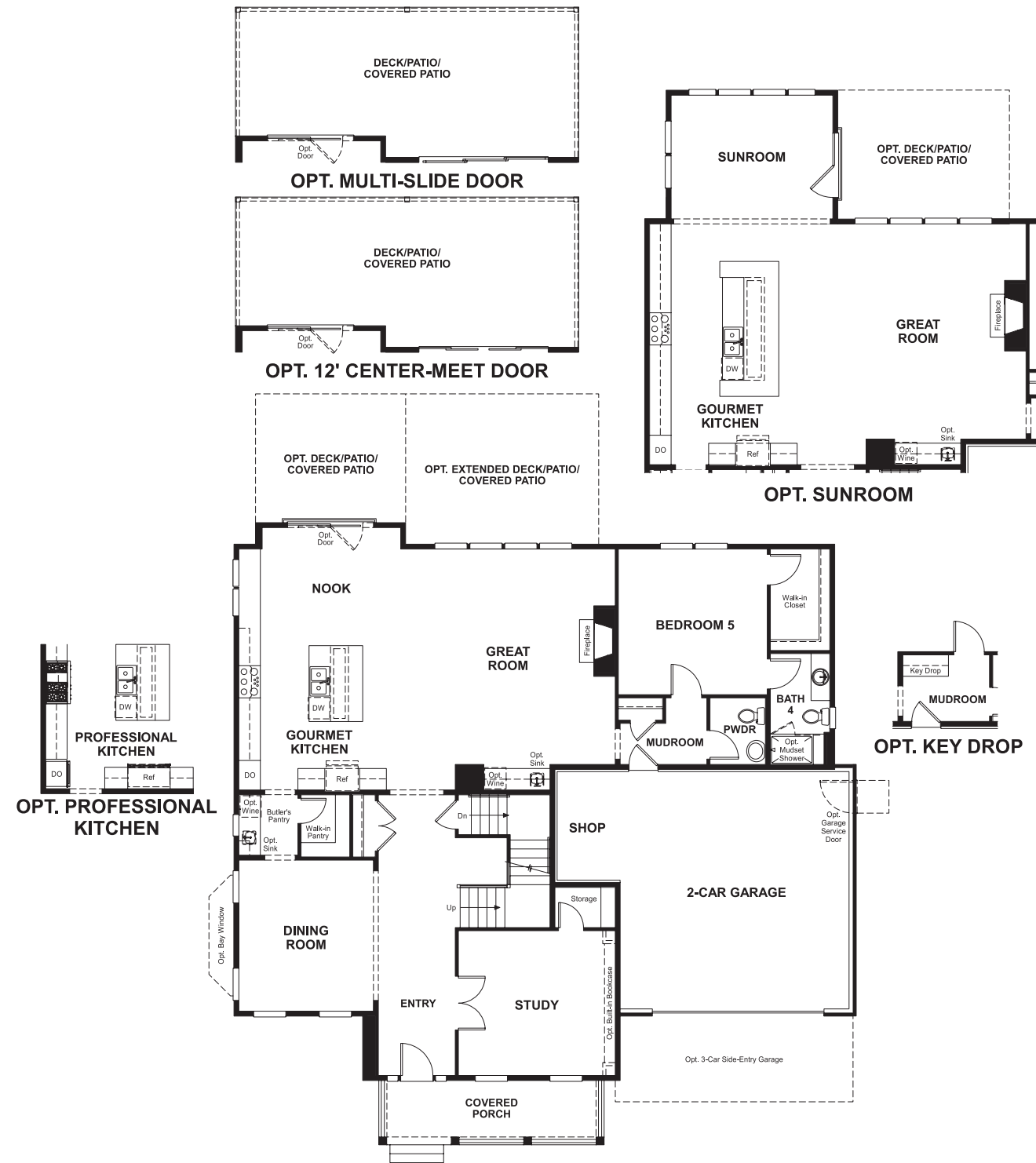
Aldie Estates | John Mosby Highway and Tenbury Wells Place | Aldie, VA 20105 | 703.348.0025



Floor plans and renderings are conceptual drawings and may vary from actual plans and homes as built. Options and features may not be available on all homes and are subject to change without notice. Actual homes may vary from photos and/or drawings which show upgraded landscaping and may not represent the lowest-priced homes in the community. Features may include optional upgrades and may not be available on all homes. Square footage numbers are approximate and are subject to change without notice. Prices, specifications and availability subject to change without notice. ©2018 Richmond American Homes, Richmond American Homes of Virginia, Inc. 03/16/2018

MAIN FLOOR

SECOND FLOOR



Floor plans and renderings are conceptual drawings and may vary from actual plans and homes as built. Options and features may not be available on all homes and are subject to change without notice. Actual homes may vary from photos and/or drawings which show upgraded landscaping and may not represent the lowest-priced homes in the community. Features may include optional upgrades and may not be available on all homes. Square footage numbers are approximate and are subject to change without notice. Prices, specifications and availability subject to change without notice. ©2018 Richmond American Homes, Richmond American Homes of Virginia, Inc. 03/16/2018

Floor plans and renderings are conceptual drawings and may vary from actual plans and homes as built. Options and features may not be available on all homes and are subject to change without notice. Actual homes may vary from photos and/or drawings which show upgraded landscaping and may not represent the lowest-priced homes in the community. Features may include optional upgrades and may not be available on all homes. Square footage numbers are approximate and are subject to change without notice. Prices, specifications and availability subject to change without notice. ©2018 Richmond American Homes, Richmond American Homes of Virginia, Inc. 03/16/2018