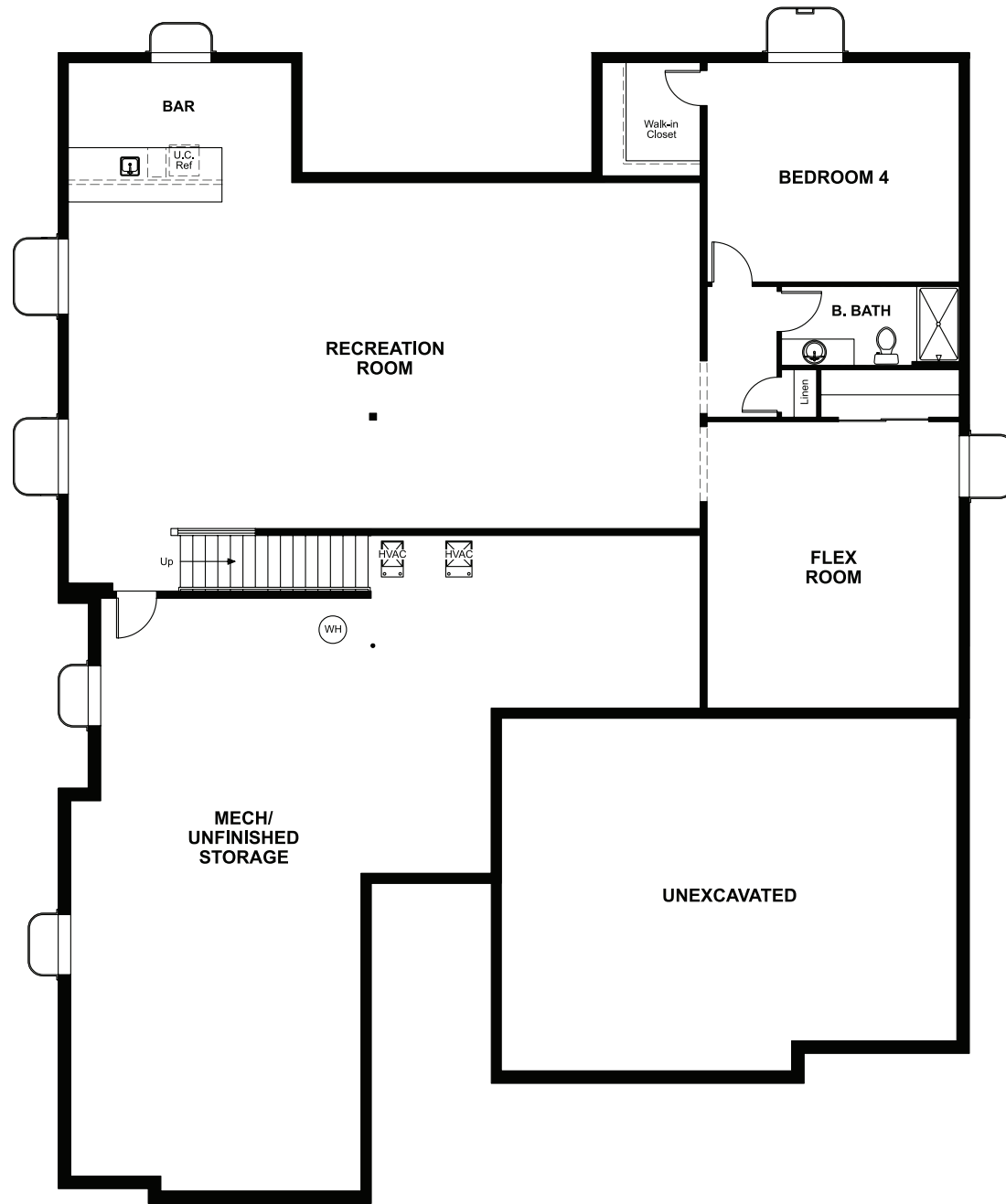


BASEMENT



ELEVATION D

ABOUT THE HOLBROOK

The stunning Holbrook plan was designed for entertaining! At the heart of the home, you'll find an immense great room with a cozy fireplace and an adjacent dining nook. The professional kitchen, which offers a generous island and walk-in pantry, is connected to the formal dining room via a butler's pantry. You'll also appreciate three bedrooms, including a lavish primary suite showcasing an oversized walk-in closet and a deluxe bath with double sinks and a walk-in shower. A secondary bath, central laundry and powder rooms, an elegant study, and a covered patio with multi-slide doors complete the main floor. Additionally, the Holbrook features a finished basement boasting a flex room, a bedroom, a full bath, and a rec room with a wet bar.



ELEVATION A



ELEVATION B



ELEVATION C

COMMUNITY LOCATION:

Chateau at the Meadows | 1167 Oleander Street | Castle Rock, CO 80109 | 303.850.5750



Floor plans and renderings are conceptual drawings and may vary from actual plans and homes as built. Options and features may not be available on all homes and are subject to change without notice. Actual homes may vary from photos and/or drawings which show upgraded landscaping and may not represent the lowest-priced homes in the community. Features may include optional upgrades and may not be available on all homes. Prices, specifications and availability are subject to change without notice. Square footage is approximate and subject to change without notice. ©2025 Richmond American Homes, Richmond American Homes of Colorado, Inc. 05/22/25

