

McAllister Meadows
LINDSAY



Elevation B

Approx. square feet: 1,800
Stories: 2
Bedrooms: 3 - 4
Garage: 2-car
Plan Number: W18L

At the heart of the Lindsay plan is a spacious great room, complete with fireplace, and a well-appointed kitchen with a walk-in pantry, breakfast nook and optional gourmet or chef's features. The main floor also features a convenient powder room. Upstairs, you'll find a laundry, a loft that can be converted to an extra bedroom and an elegant master suite with an expansive walk-in closet. Personalize this plan with an optional covered patio or deck!

Available elevations:



Elevation B



Elevation C



Elevation E

COMMUNITY LOCATION

2138 Ava Street Southeast
Lacey, WA 98513
360-529-4665

HOME GALLERY

20829 72nd Avenue South, Suite 115
Kent, WA 98032
253-446-7277



COMMUNITY LOCATION

2138 Ava Street Southeast
Lacey, WA 98513
360-529-4665

HOME GALLERY

20829 72nd Avenue South, Suite 115
Kent, WA 98032
253-446-7277

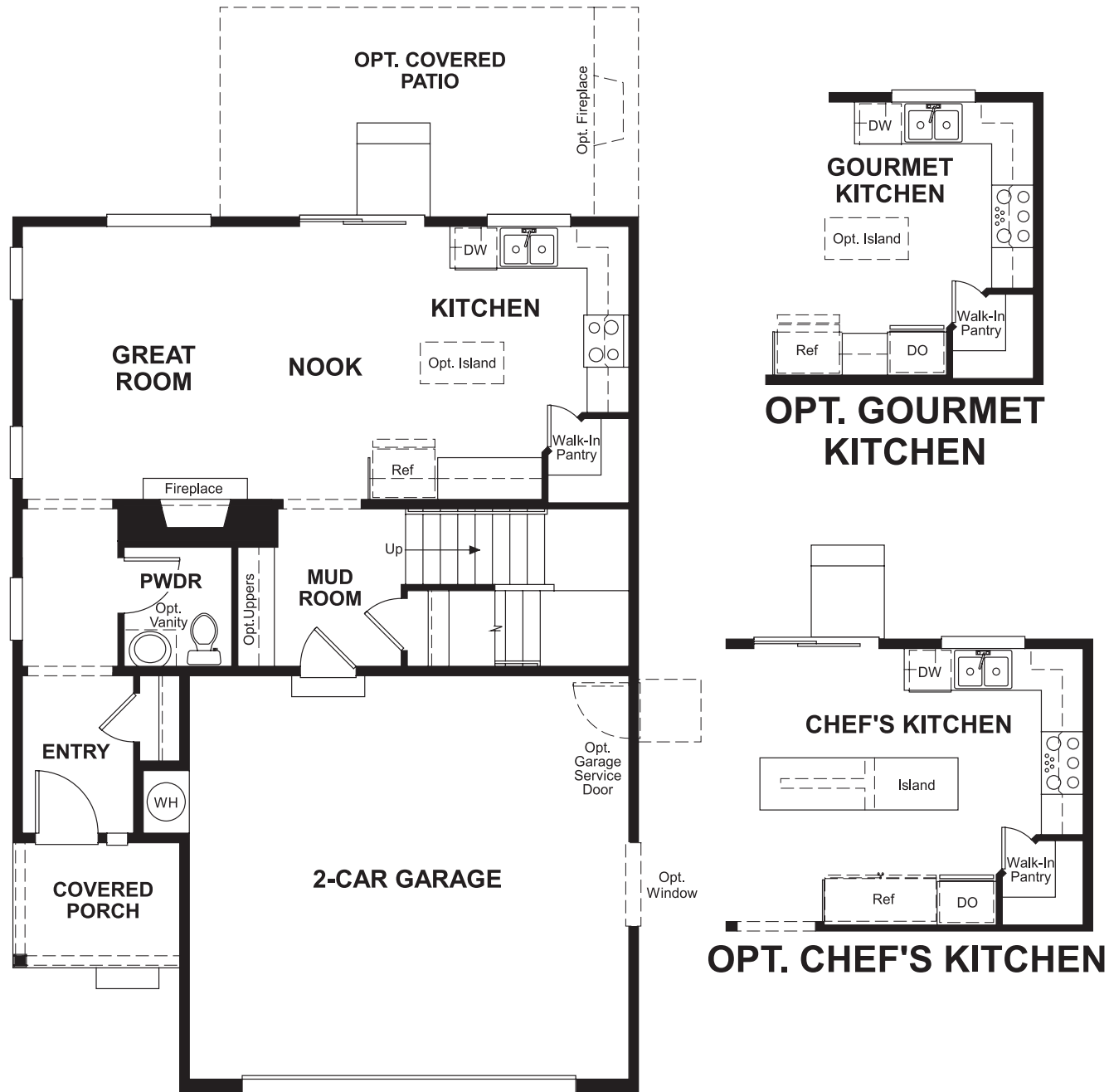


McAllister Meadows
LINDSAY

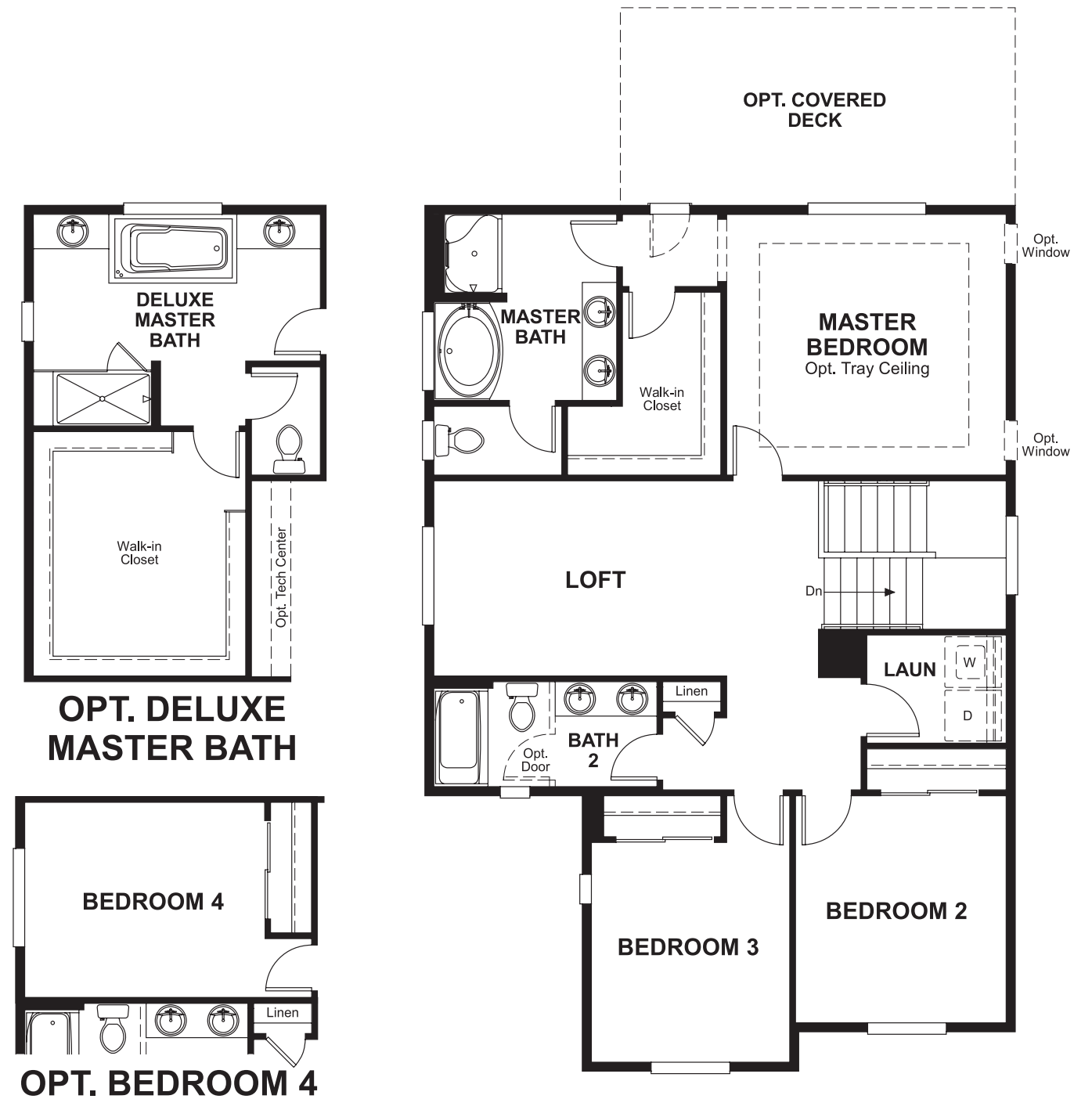
Approx. square feet: 1,800
Stories: 2
Bedrooms: 3 - 4

Garage: 2-car
Plan Number: W18L

Floor Plan
Main Floor



Floor Plan
Second Floor



THIS PLAN'S PROJECTED HERS® INDEX = 71 *
Projected Rating Based on Plans – Field Confirmation Required

How does this floor plan rate?
Take a look: **100** = Standard new home* **130** = Typical resale home**
The lower the number, the better! Refer to the RESNET® HERS index brochure or go to www.RESNET.us for details.

What's a HERS® Index? HERS stands for Home Energy Rating System, a system created by RESNET® to measure home energy efficiency.[^]
A Projected HERS index or rating is a computer simulation performed prior to construction by a third-party HERS rater using RESNET-accredited rating software, rated feature and specification data derived from home plans, features and specifications, and other data selected or assumed by the rater. The projected HERS index is approximate and is subject to change without notice. Actual results will vary.

*This information is presented for education purposes only. The HERS index for a confirmed rating will be determined by a third-party HERS rater based on data gathered from on-site observations and, if required, testing of rated features for a home as featured, optioned, located, oriented and/or built.
+Standard new home is based on the RESNET® Reference Home definition with a HERS® index of 100 (based on the 2006 International Energy Conservation Code).
++Typical resale home is based on the U.S. Department of Energy definition with a HERS® index of 130.

[^]RESNET® has developed the HERS® index to indicate the comparative efficiencies of homes. It is no guarantee that energy efficiencies will be achieved.