

McAllister Meadows
LYNDA



Elevation B

Approx. square feet: 1,850
Stories: 2
Bedrooms: 3 - 4
Garage: 2-car
Plan Number: W16L

The grand two-story entry of the Lynda plan leads to an inviting great room with a fireplace. The main floor also features a convenient powder room and an impressive kitchen with a center island and an adjacent dining room. Upstairs, enjoy a roomy loft and a lavish master suite with an oversized walk-in closet. Personalization options include a gourmet or chef's kitchen, a fourth bedroom in lieu of the loft and a deluxe master bath.

Available elevations:



Elevation B



Elevation C



Elevation E

COMMUNITY LOCATION

2138 Ava Street Southeast
Lacey, WA 98513
360-529-4665

HOME GALLERY

20829 72nd Avenue South, Suite 115
Kent, WA 98032
253-446-7277



COMMUNITY LOCATION

2138 Ava Street Southeast
Lacey, WA 98513
360-529-4665

HOME GALLERY

20829 72nd Avenue South, Suite 115
Kent, WA 98032
253-446-7277

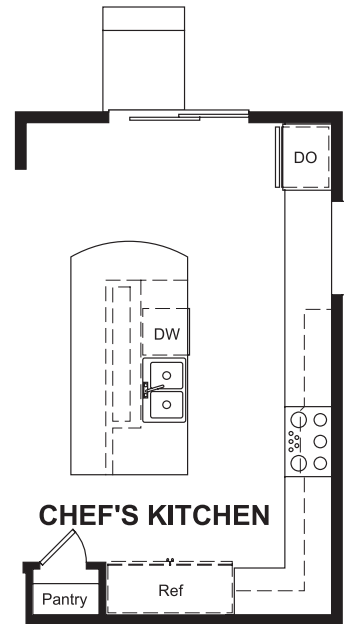
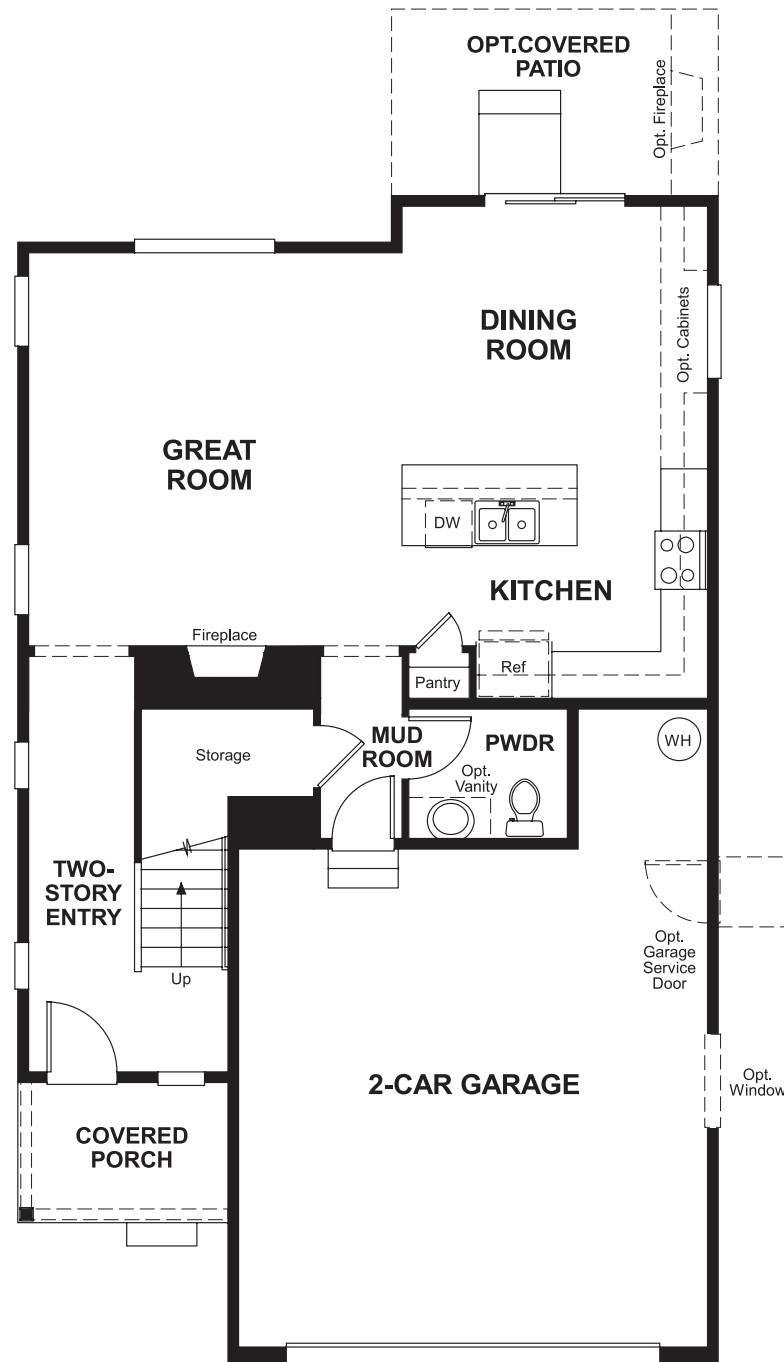


McAllister Meadows
LYNDA

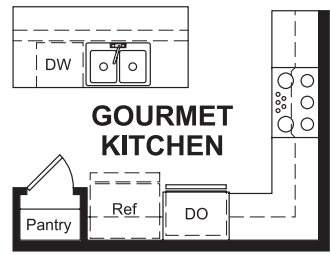
Approx. square feet: 1,850
Stories: 2
Bedrooms: 3 - 4

Garage: 2-car
Plan Number: W16L

Floor Plan
Main Floor

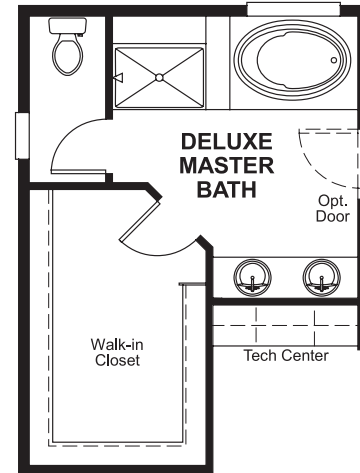


OPT. CHEF'S KITCHEN

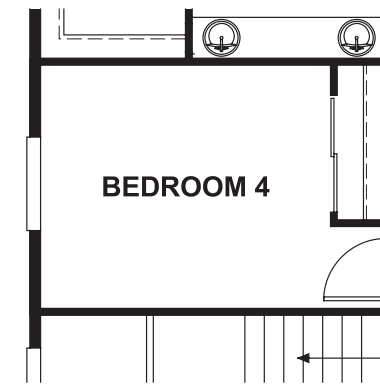
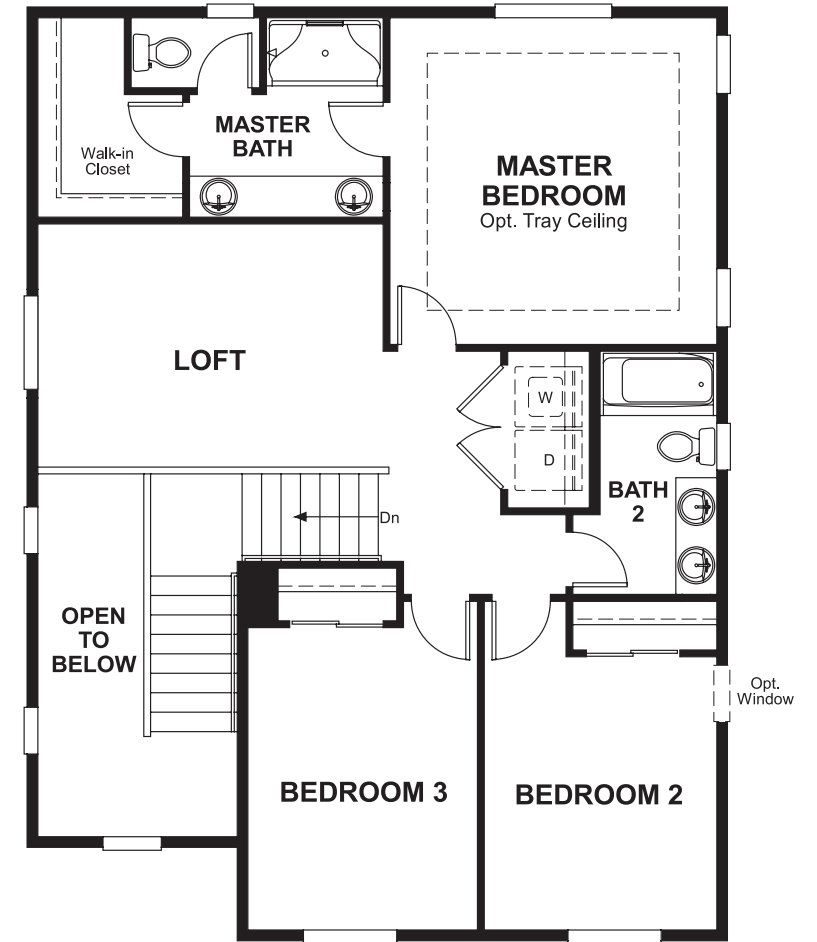


OPT. GOURMET KITCHEN

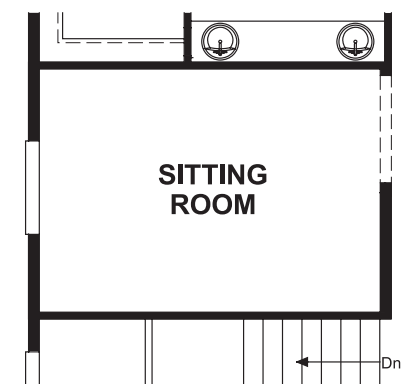
Floor Plan
Second Floor



OPT. DELUXE MASTER BATH



OPT. BEDROOM 4



OPT. SITTING ROOM

THIS PLAN'S PROJECTED HERS® INDEX = 71*
Projected Rating Based on Plans – Field Confirmation Required

How does this floor plan rate?
Take a look: **100** = Standard new home* **130** = Typical resale home**
The lower the number, the better! Refer to the RESNET® HERS index brochure or go to www.RESNET.us for details.

What's a HERS® Index? HERS stands for Home Energy Rating System, a system created by RESNET® to measure home energy efficiency. A Projected HERS index or rating is a computer simulation performed prior to construction by a third-party HERS rater using RESNET-accredited rating software, rated feature and specification data derived from home plans, features and specifications, and other data selected or assumed by the rater. The projected HERS index is approximate and is subject to change without notice. Actual results will vary.

*This information is presented for education purposes only. The HERS index for a confirmed rating will be determined by a third-party HERS rater based on data gathered from on-site observations and, if required, testing of rated features for a home as featured, optioned, located, oriented and/or built.
+Standard new home is based on the RESNET® Reference Home definition with a HERS® index of 100 (based on the 2006 International Energy Conservation Code).
++Typical resale home is based on the U.S. Department of Energy definition with a HERS® index of 130.

^RESNET® has developed the HERS® index to indicate the comparative efficiencies of homes. It is no guarantee that energy efficiencies will be achieved.