

THE PINECREST

Approx. 2,390 sq. ft. | 3 bed | 2.5 bath | 3-car garage | Plan #P853 - CONFIG. 2



ELEVATION C

ABOUT THE PINECREST

Boasting an open layout that’s ready-made for entertaining, the ranch-style Pinecrest plan centers around an immense great room, a comfortable dining nook and a gourmet kitchen with a large island and walk-in pantry. A stunning primary suite is nearby, showcasing two walk-in closets and a deluxe bath with dual vanities, a shower and a soaking tub. Two additional bedrooms, a shared bath, a study, a laundry, a mudroom, a powder room and a covered patio round out this home. Our professionally curated fixtures and finishes are sure to impress!

COMMUNITY LOCATION:


Estates at Haciendas at White Peak | 13719 W Morning Vista Drive | Peoria, AZ 85383 | 623.289.6403

\*This information is presented for educational purposes only. The HERS® index for a confirmed rating will be determined by a third-party HERS rater based on data gathered from on-site observations and, if required, testing of rated features for a home as featured, optioned, located, oriented and/or built.

\*\*Standard new home is based on the RESNET® Reference Home definition with a HERS index of 100 (based on the 2006 International Energy Conservation Code).

\*\*\*Typical resale home is based on the U.S. Department of Energy definition with a HERS index of 130.

^RESNET has developed the HERS index to indicate the comparative efficiencies of homes. It is no guarantee that energy efficiencies will be achieved.



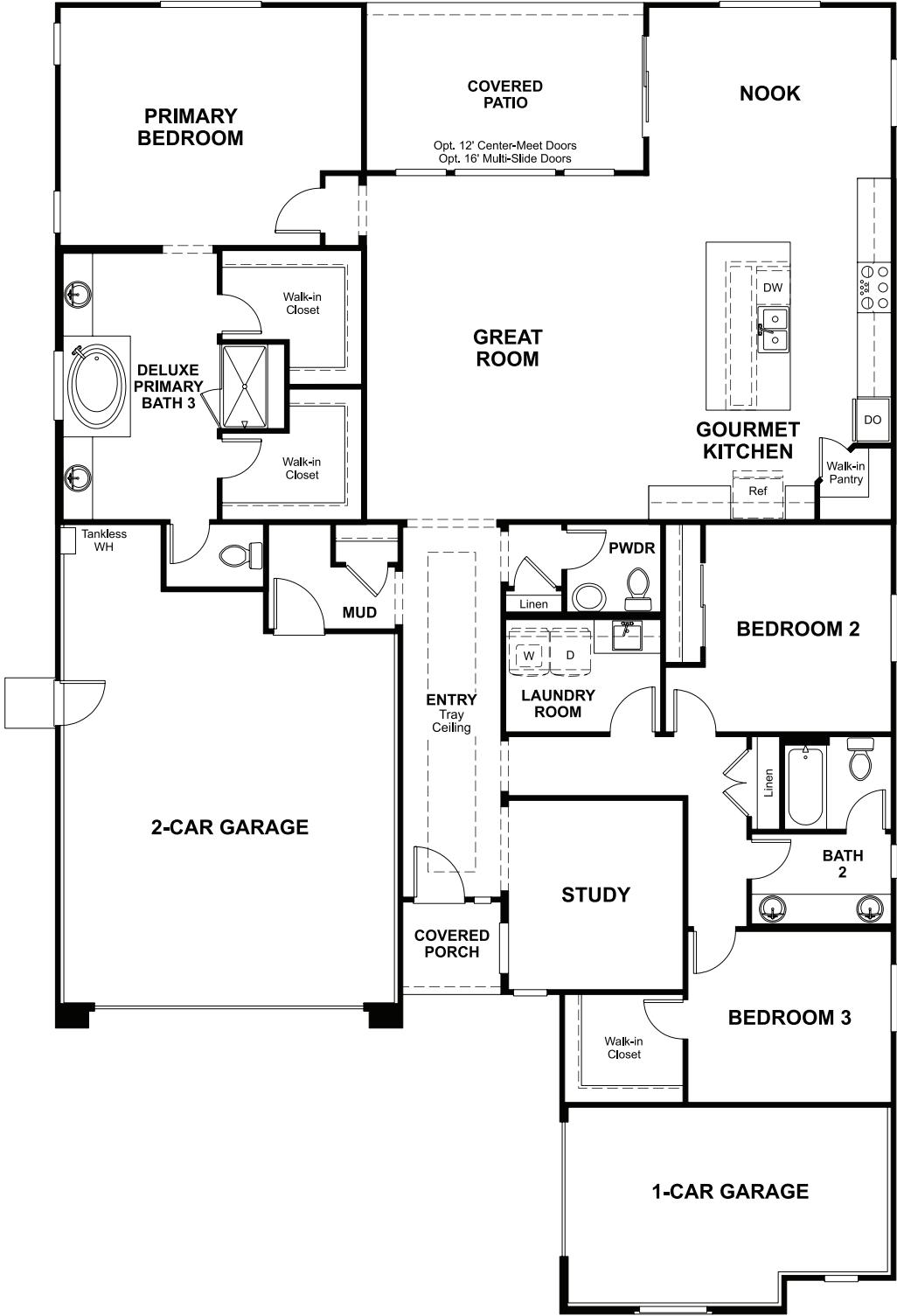
Floor plans and renderings are conceptual drawings and may vary from actual plans and homes as built. Options and features may not be available on all homes and are subject to change without notice. Actual homes may vary from photos and/or drawings which show upgraded landscaping and may not represent the lowest-priced homes in the community. Features may include optional upgrades and may not be available on all homes. Prices, specifications and availability are subject to change without notice. Square footage is approximate and subject to change without notice. ©2025 Richmond American Homes, Richmond American Homes of Arizona, Inc. (a public report is available on the state real estate department’s website), Richmond American Construction, Inc. ROC #206612. 06/23/2025



ELEVATION A



ELEVATION B



THIS PLAN'S PROJECTED  
**HERS® INDEX = 44\***  
Projected rating based on plans – field confirmation required

**How does this floor plan rate?**  
Take a look: **100** = standard new home™ **130** = typical resale home™  
The lower the number, the better! Refer to the RESNET® HERS index brochure  
or go to **RESNET.us** and **HERSindex.com**

**What's a HERS® index?** HERS stands for Home Energy Rating System, a system created by RESNET® to measure home energy efficiency.^  
A projected HERS index or rating is a computer simulation performed prior to construction by a third-party HERS rater using RESNET-accredited rating software, rated feature and specification data derived from home plans, features and specifications, and other data selected or assumed by the rater. The projected HERS index is approximate and is subject to change without notice. Actual results will vary.