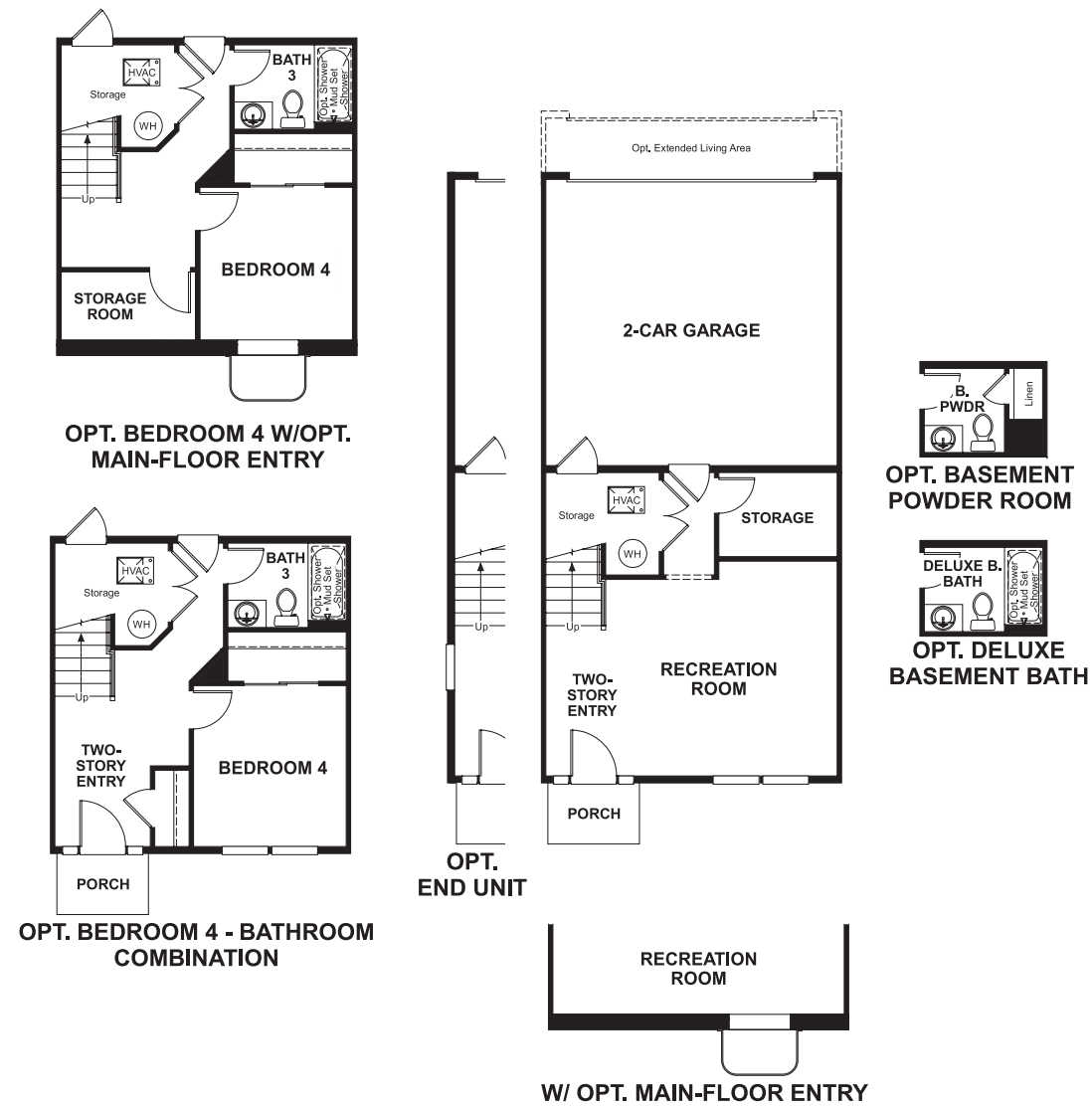


Bristol Green
KIMBERLY

Approx. square feet: 1,950
Stories: 3
Bedrooms: 3 - 4

Garage: 2-Car
Plan Number: M19K

Floor Plan
Basement



COMMUNITY LOCATION
Old Frederick Road & St. Agnes Lane
Catonsville, MD 21228
410-312-2829



Bristol Green
KIMBERLY

Approx. square feet: 1,950
Stories: 3
Bedrooms: 3 - 4
Garage: 2-Car
Plan Number: M19K



Elevation H, A, G, D

Available elevations:



Elevation H, A, G, D



Elevation B, E, F, C

The Kimberly plan offers three floors of generous living space. On the main floor, an open dining room and spacious living room flank a charming kitchen with a roomy center island and optional gourmet features. Upstairs, enjoy a convenient laundry, a full bath and a relaxing master suite with an optional deluxe bath. The lower floor boasts an expansive rec room, which can be optioned as an extra bedroom.

COMMUNITY LOCATION
Old Frederick Road & St. Agnes Lane
Catonsville, MD 21228
410-312-2829

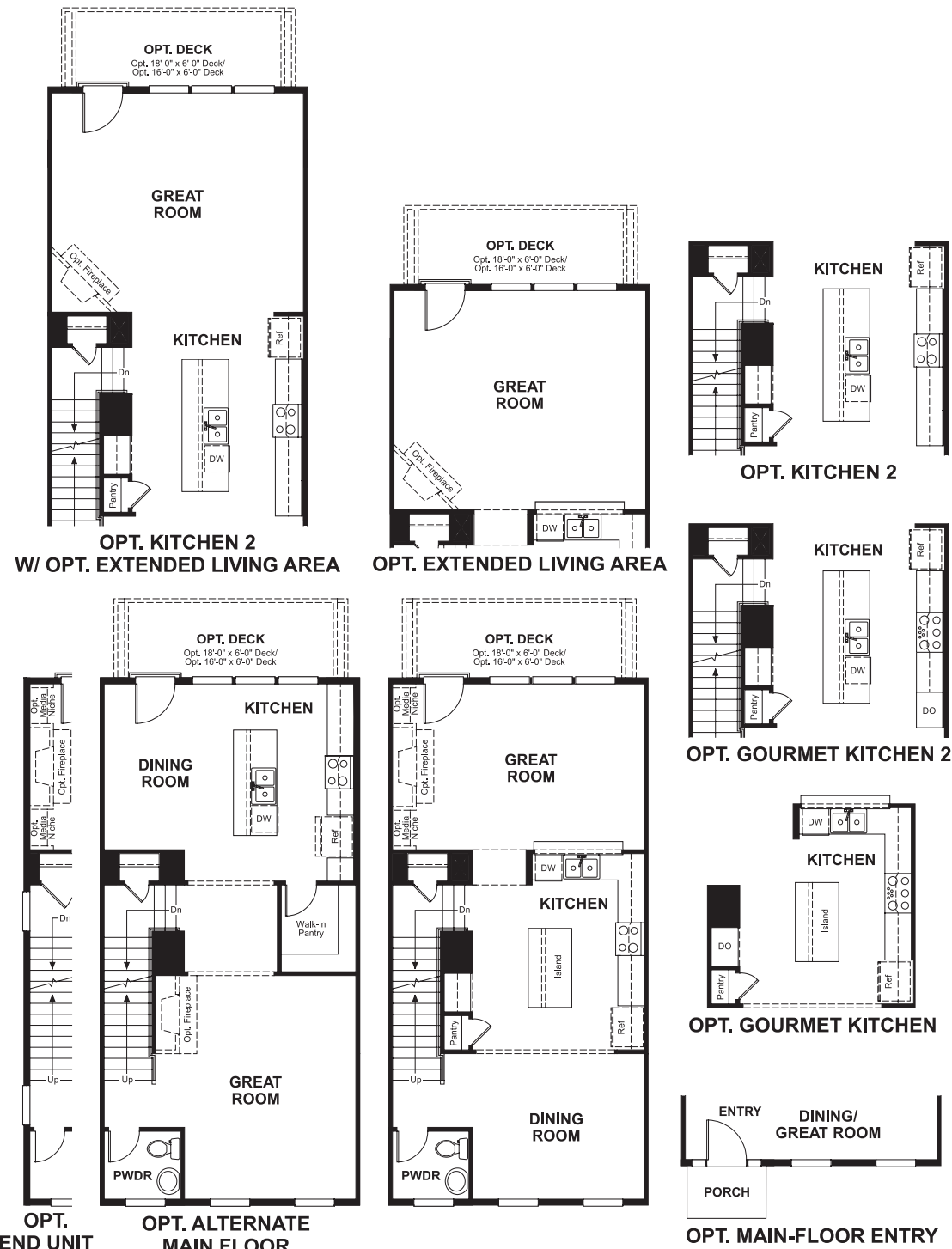


Bristol Green
KIMBERLY

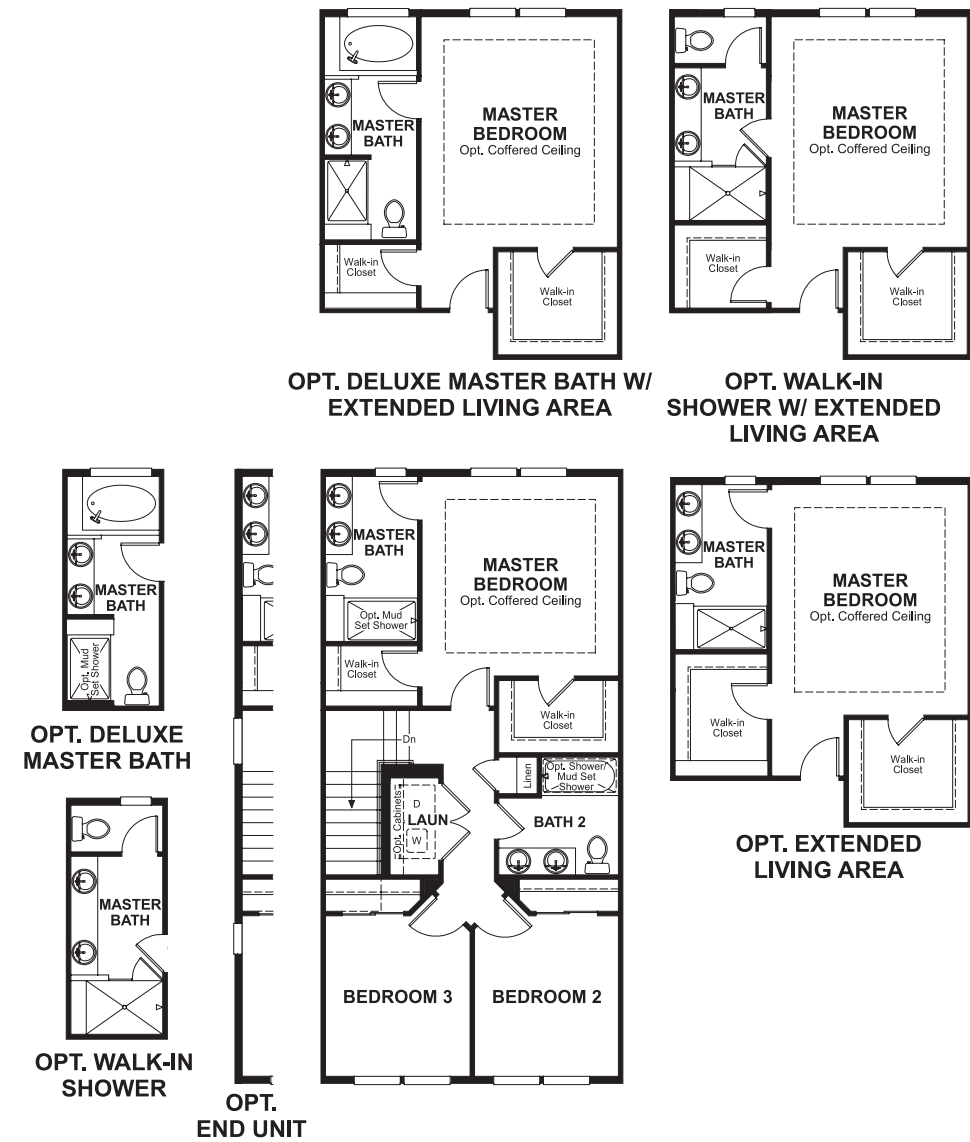
Approx. square feet: 1,950
Stories: 3
Bedrooms: 3 - 4

Garage: 2-Car
Plan Number: M19K

Floor Plan
Main Floor



Floor Plan
Second Floor



THIS PLAN'S PROJECTED HERS® INDEX = 69*
Projected Rating Based on Plans – Field Confirmation Required

How does this floor plan rate?
Take a look: **100** = Standard new home* **130** = Typical resale home**
The lower the number, the better! Refer to the RESNET® HERS index brochure or go to www.RESNET.us for details.

What's a HERS® Index? HERS stands for Home Energy Rating System, a system created by RESNET® to measure home energy efficiency.[^]
A Projected HERS index or rating is a computer simulation performed prior to construction by a third-party HERS rater using RESNET-accredited rating software, rated feature and specification data derived from home plans, features and specifications, and other data selected or assumed by the rater. The projected HERS index is approximate and is subject to change without notice. Actual results will vary.

*This information is presented for education purposes only. The HERS index for a confirmed rating will be determined by a third-party HERS rater based on data gathered from on-site observations and, if required, testing of rated features for a home as featured, optioned, located, oriented and/or built.
+Standard new home is based on the RESNET® Reference Home definition with a HERS® index of 100 (based on the 2006 International Energy Conservation Code).
++Typical resale home is based on the U.S. Department of Energy definition with a HERS® index of 130.

[^]RESNET® has developed the HERS® index to indicate the comparative efficiencies of homes. It is no guarantee that energy efficiencies will be achieved.