

GLENNWILDE  
CITRINE



**APPROX. SQUARE FEET: 1,850**  
**STORIES: 2**  
**BEDROOMS: 3 - 4**  
**GARAGE: 2-car**  
**PLAN NUMBER: P904**

Imagine your life in this two-story home. Breakfast at the spacious kitchen island or in the nearby dining room. Spend the afternoon in your quiet study or on your covered patio. Host a movie night in the inviting great room. At the end of the day, retreat upstairs to the master suite, complete with a roomy walk-in closet and private bath. Upstairs, you'll also enjoy two additional bedrooms, a convenient laundry and another full bath. A main-floor bedroom with full bath is also available.

**Available elevation:**



Elevation A



Elevation B



Elevation C

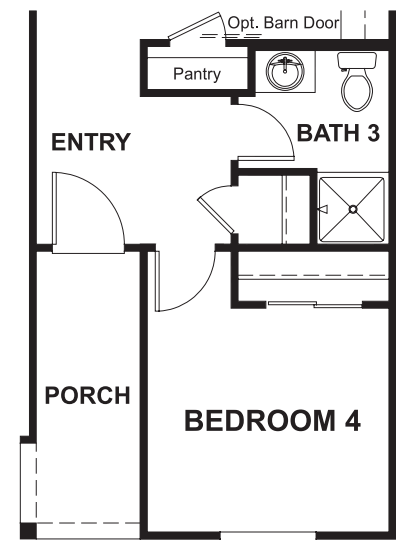
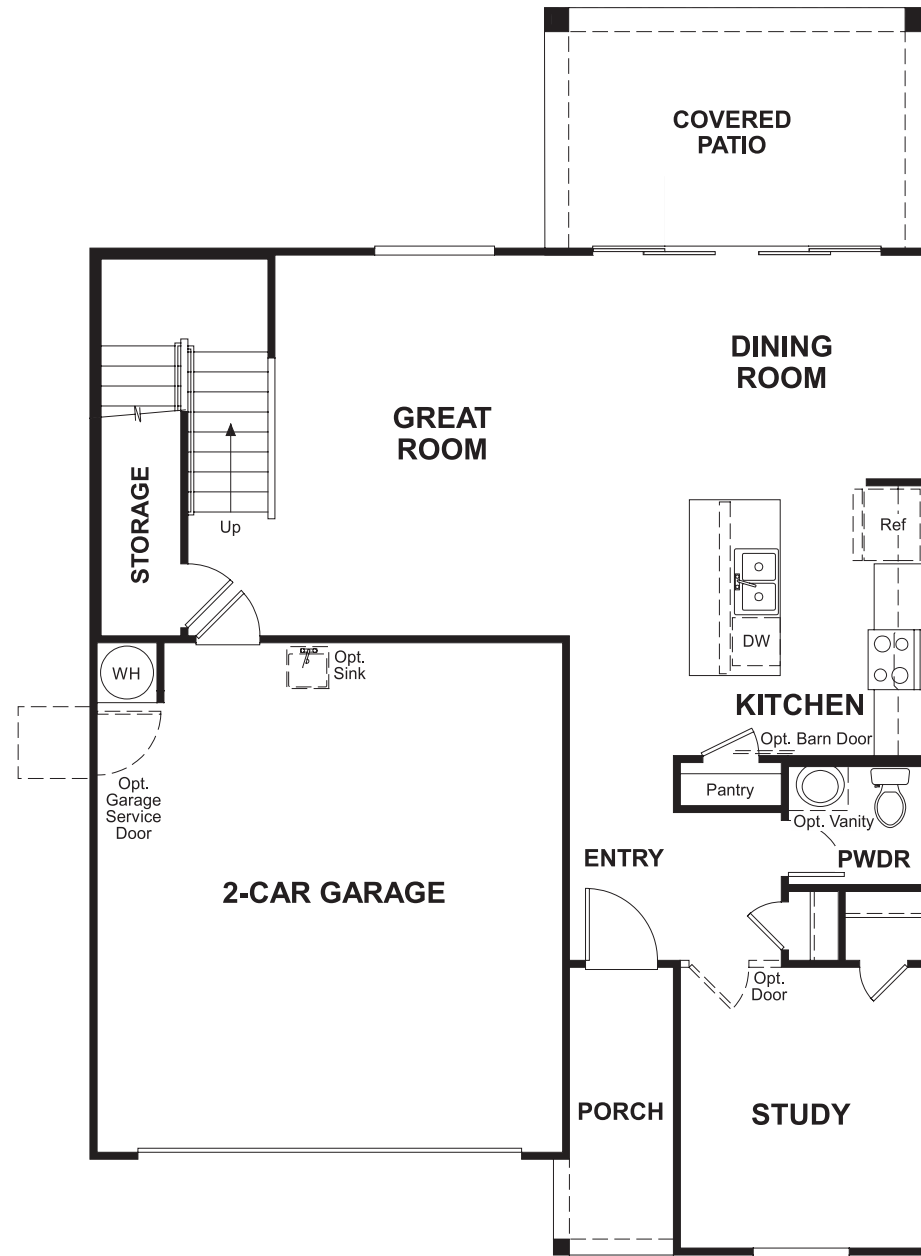
**COMMUNITY LOCATION**  
19376 North Crestview Lane  
Maricopa, AZ 85138  
520-316-4355



**HOME GALLERY**  
16427 North Scottsdale Road, Suite 175  
Scottsdale, AZ 85254  
877-444-1485

[RICHMONDAMERICAN.COM/SEASONS](http://RICHMONDAMERICAN.COM/SEASONS)

FLOOR PLAN  
MAIN FLOOR



OPT. BEDROOM 4/  
BATH 3

FLOOR PLAN  
SECOND FLOOR

