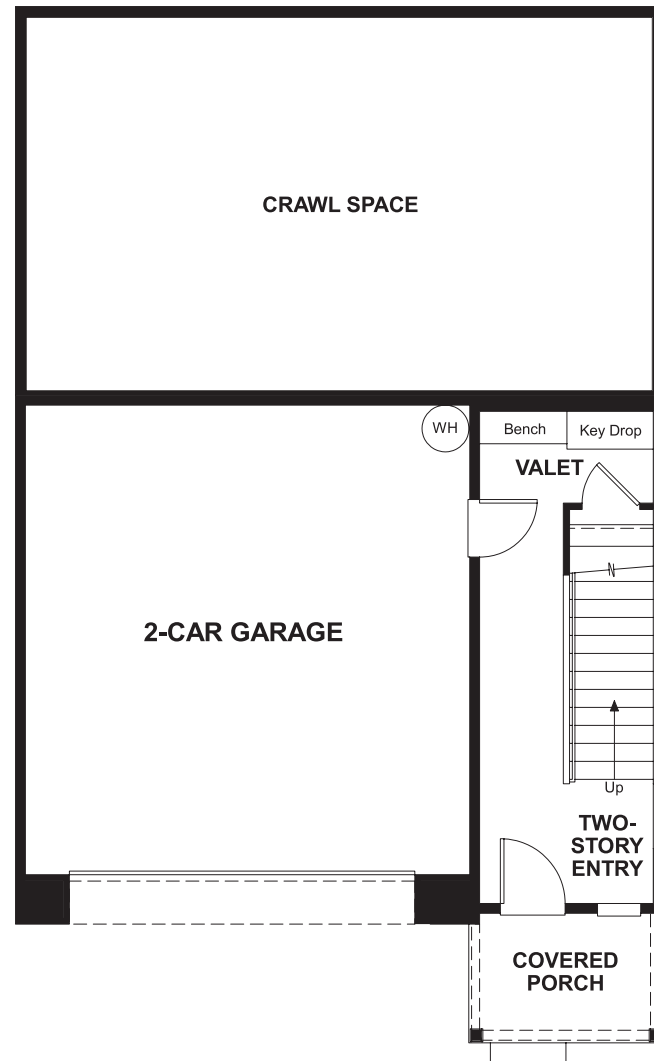


THE LEO

Approx. 2,550 sq. ft. | 2 stories | 3 bedrooms | 2-car garage | Plan #W593

LOWER FLOOR



ELEVATION F

ABOUT THE LEO

The Leo plan was designed for entertaining, with a spacious great room with a fireplace, an open dining room and an inviting kitchen with an immense center island. A large loft and three inviting bedrooms, including an elegant master suite with a private balcony, occupy the home's upper floor. Personalization options include a gourmet or chef's kitchen, covered patio and master sitting room.



ELEVATION C



ELEVATION D

*This information is presented for education purposes only. The HERS index for a confirmed rating will be determined by a third-party HERS rater based on data gathered from on-site observations and, if required, testing of rated features for a home as featured, optioned, located, oriented and/or built.

+Standard new home is based on the RESNET® Reference Home definition with a HERS® index of 100 (based on the 2006 International Energy Conservation Code).

++Typical resale home is based on the U.S. Department of Energy definition with a HERS® index of 130.

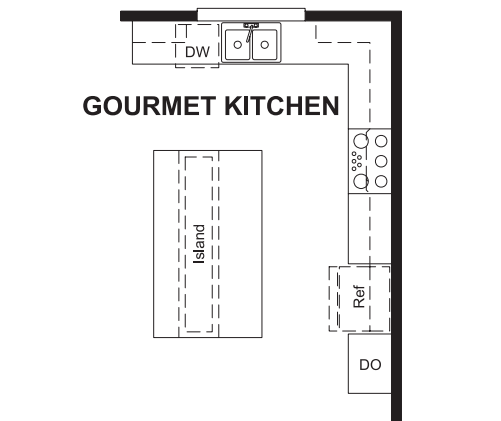
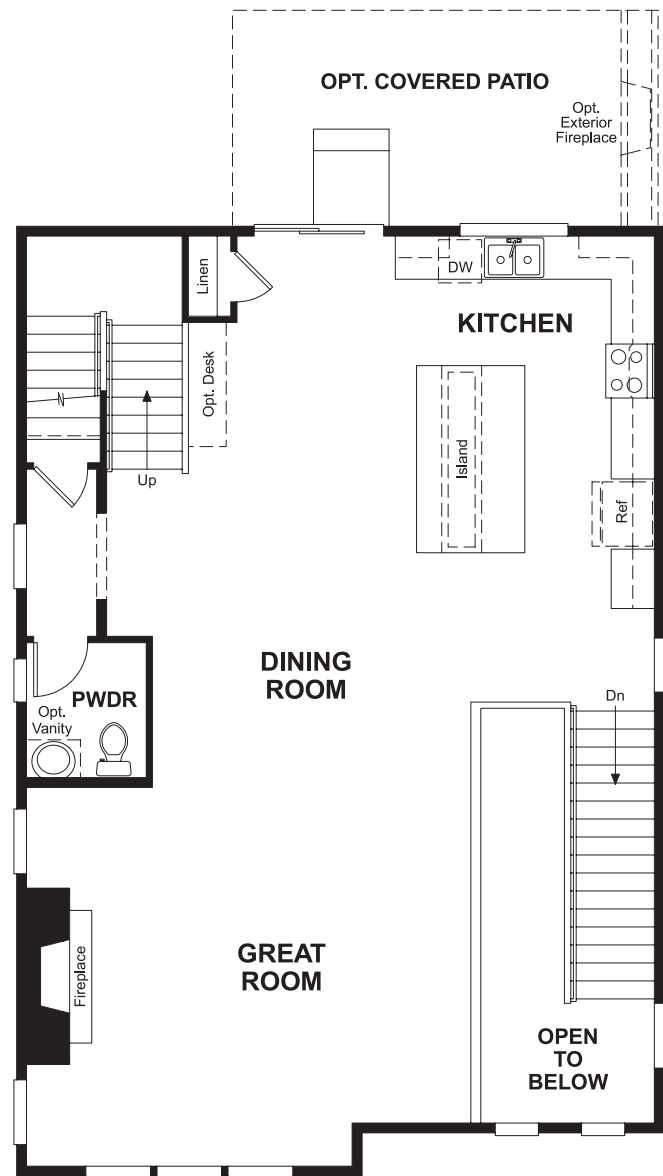
^RESNET® has developed the HERS® index to indicate the comparative efficiencies of homes. It is no guarantee that energy efficiencies will be achieved.



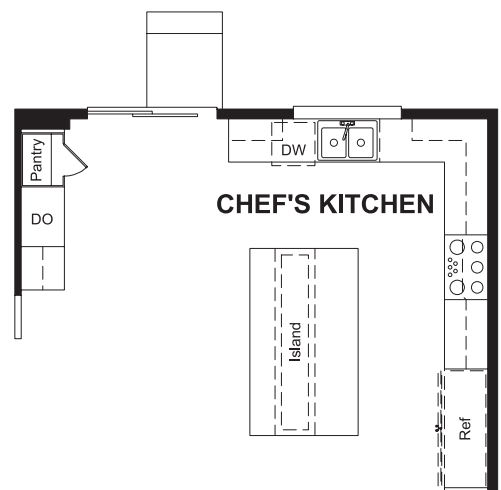
Floor plans and renderings are conceptual drawings and may vary from actual plans and homes as built. Options and features may not be available on all homes and are subject to change without notice. Actual homes may vary from photos and/or drawings which show upgraded landscaping and may not represent the lowest-priced homes in the community. Features may include optional upgrades and may not be available on all homes. Square footage numbers are approximate and are subject to change without notice. ©2017 Richmond American Homes, Richmond American Homes of Washington, Inc. 11/30/2017

MAIN FLOOR

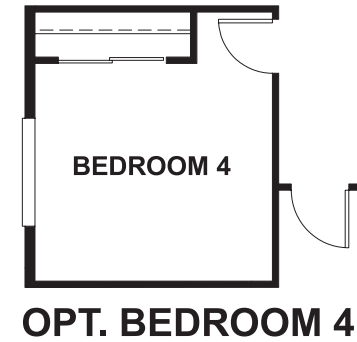
SECOND FLOOR



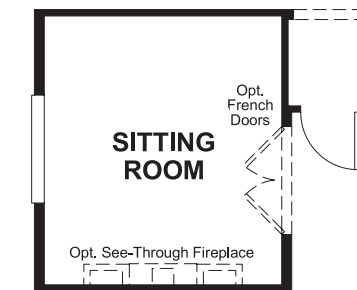
OPT. GOURMET KITCHEN



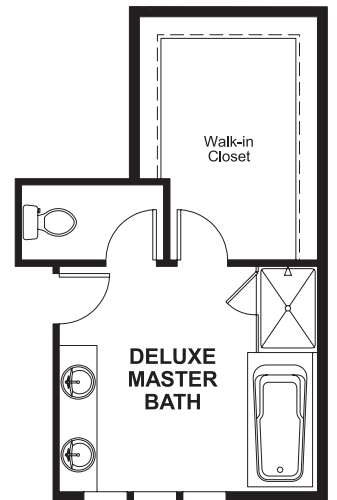
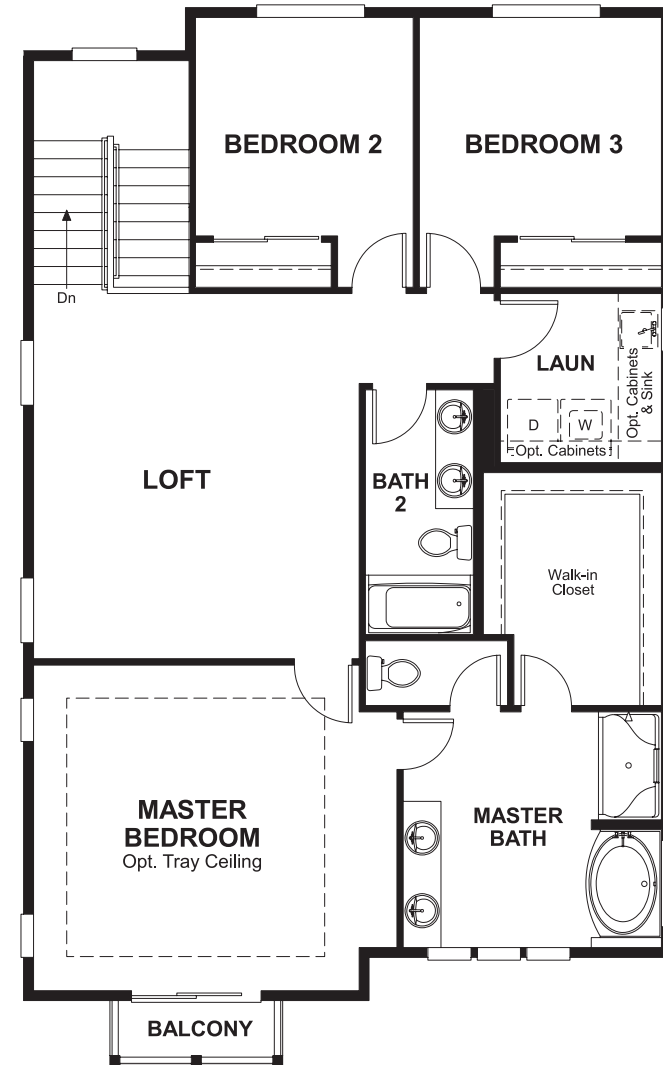
OPT. CHEF'S KITCHEN



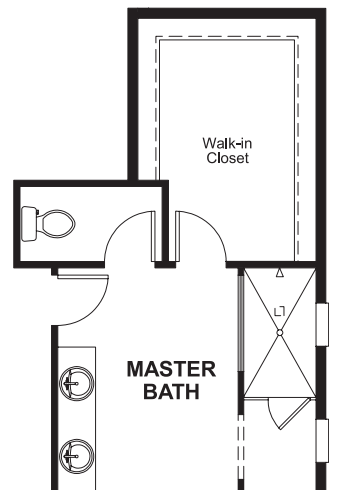
OPT. BEDROOM 4



OPT. SITTING ROOM



OPT. DELUXE MASTER BATH



OPT. WALK-IN SHOWER

THIS PLAN'S PROJECTED **HERS® INDEX = 64***

Projected Rating Based on Plans – Field Confirmation required

How does this floor plan rate?

Take a look: **100** = Standard new home+ **130** = Typical resale Home++
The lower number, the better! Refer to the RESNET® HERS index brochure or go to www.RESNET.us and www.HERSindex.com

What's a HERS® Index? HERS stands for Home Energy Rating System, a system created by RESNET® to measure home energy efficiency. ^

A Projected HERS index or rating is a computer simulation performed prior to construction by a third-party HERS rater using RESNET-accredited rating software, rated feature and specification data derived from home plans, features and specifications, and other data selected or assumed by the rater. The projected HERS index is approximate and is subject to change without notice. Actual results will vary.