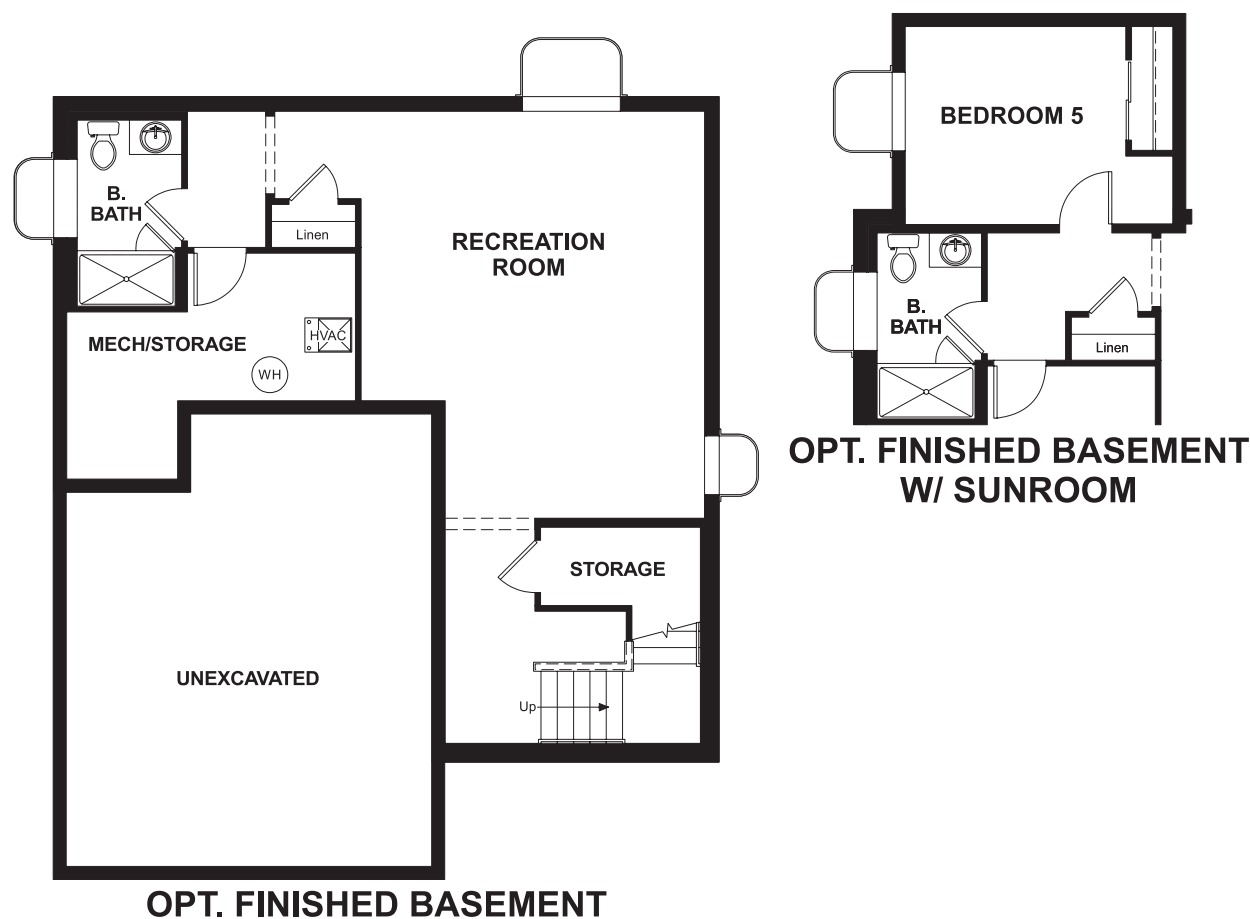


BASEMENT



ELEVATION C

ABOUT THE FALLON

The Fallon plan greets guests with a grand two-story entry and continues to impress with an inviting great room and a generous dining room that opens to a well-appointed kitchen with a spacious center island. Upstairs, you'll find a loft and three large bedrooms, including a lavish master suite with an oversized walk-in closet. Options include a gourmet kitchen, sunroom, deluxe master bath and finished basement.

COMMUNITY LOCATION:

Skyview at Crystal Valley | 2423 Garganey Drive | Castle Rock, CO 80104 | 303-694-4788

*This information is presented for education purposes only. The HERS index for a confirmed rating will be determined by a third-party HERS rater based on data gathered from on-site observations and, if required, testing of rated features for a home as featured, optioned, located, oriented and/or built.

+Standard new home is based on the RESNET® Reference Home definition with a HERS® index of 100 (based on the 2006 International Energy Conservation Code).

++Typical resale home is based on the U.S. Department of Energy definition with a HERS® index of 130.

^RESNET® has developed the HERS® index to indicate the comparative efficiencies of homes. It is no guarantee that energy efficiencies will be achieved.

Floor plans and renderings are conceptual drawings and may vary from actual plans and homes as built. Options and features may not be available on all homes and are subject to change without notice. Actual homes may vary from photos and/or drawings which show upgraded landscaping and may not represent the lowest-priced homes in the community. Features may include optional upgrades and may not be available on all homes. Square footage numbers are approximate and are subject to change without notice. ©2018 Richmond American Homes, Richmond American Homes of Colorado, Inc. 2/16/2018



ELEVATION A



ELEVATION B

