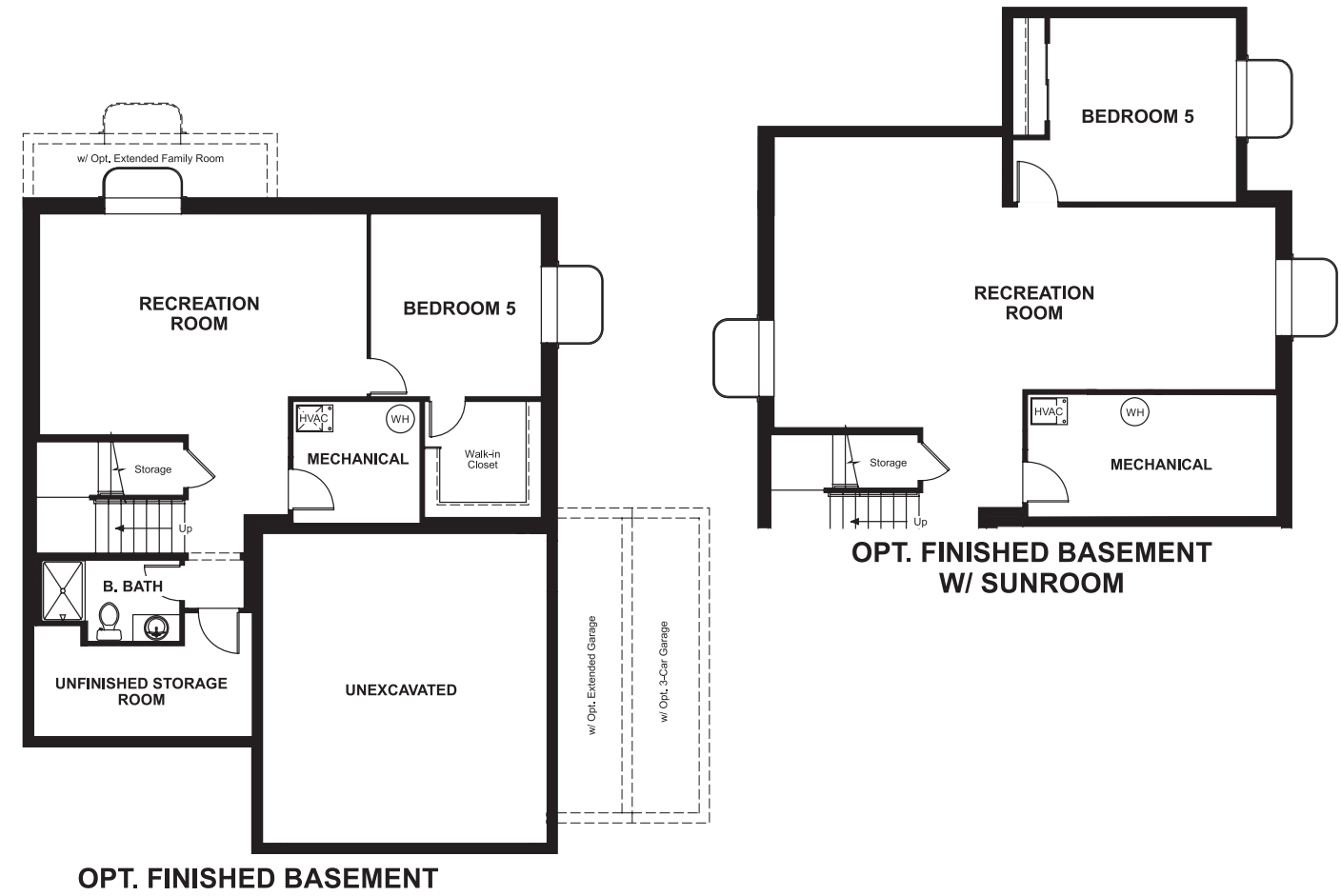


Skyview at Crystal Valley  
**BAILEY**

**Approx. square feet:** 2,150  
**Stories:** 2  
**Bedrooms:** 3 - 5

**Garage:** 2- to 3-car  
**Plan Number:** D219

**Floor Plan**  
Basement



**COMMUNITY LOCATION**  
2449 Garganey Drive  
Castle Rock 80104  
303-620-5425

**HOME GALLERY**  
8000 East Bellevue Avenue, Suite C-12  
Greenwood Village, CO 80111  
888-402-4663



Floorplans and renderings are conceptual drawings and may vary from actual plans and homes as built. Options and features may not be available on all homes and are subject to change without notice. Actual homes may vary from photos and/or drawings which show upgraded landscaping and may not represent the lowest-priced homes in the community. Features may include optional upgrades and may not be available on all homes. Square footage numbers are approximate and are subject to change without notice. Prices, specifications and availability subject to change without notice. ©2017 Richmond American Homes, Richmond American Homes of Colorado, Inc. 09/18/2017

Skyview at Crystal Valley  
**BAILEY**

**Approx. square feet:** 2,150  
**Stories:** 2  
**Bedrooms:** 3 - 5  
**Garage:** 2- to 3-car  
**Plan Number:** D219

The main floor of the beautiful Bailey plan offers a formal living room, a spacious great room and an open dining room that flows into a corner kitchen with a walk-in pantry and optional gourmet features. Upstairs, enjoy a versatile loft, a convenient laundry and a luxurious master suite with an optional deluxe bath. Personalize this plan with a private study, covered patio, finished basement and more!



**Elevation A**

**Available elevations:**



**Elevation A**



**Elevation B**



**Elevation C**

**COMMUNITY LOCATION**  
2449 Garganey Drive  
Castle Rock 80104  
303-620-5425

**HOME GALLERY**  
8000 East Bellevue Avenue, Suite C-12  
Greenwood Village, CO 80111  
888-402-4663



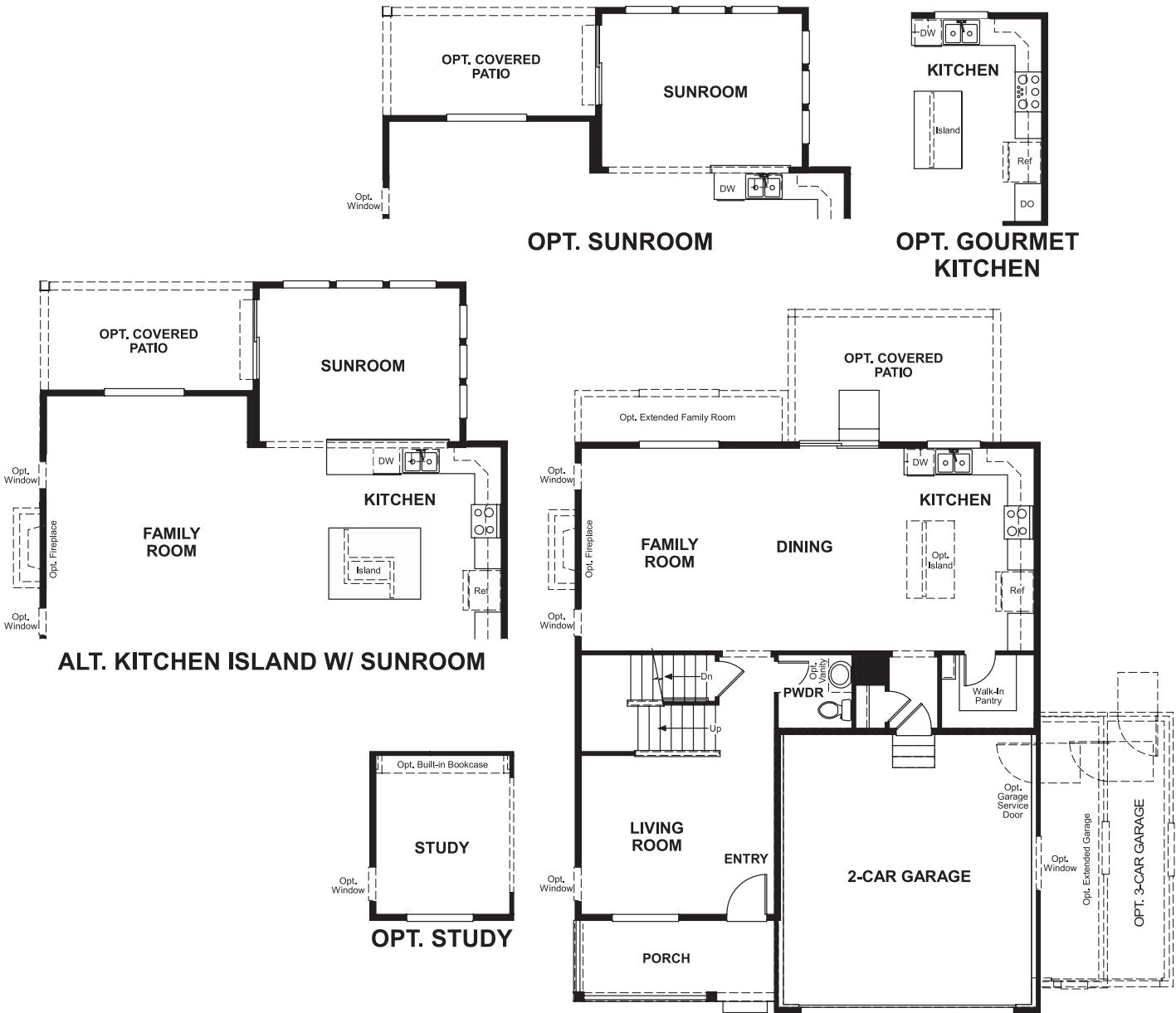
Floorplans and renderings are conceptual drawings and may vary from actual plans and homes as built. Options and features may not be available on all homes and are subject to change without notice. Actual homes may vary from photos and/or drawings which show upgraded landscaping and may not represent the lowest-priced homes in the community. Features may include optional upgrades and may not be available on all homes. Square footage numbers are approximate and are subject to change without notice. Prices, specifications and availability subject to change without notice. ©2017 Richmond American Homes, Richmond American Homes of Colorado, Inc. 09/18/2017

Skyview at Crystal Valley  
**BAILEY**

**Approx. square feet:** 2,150  
**Stories:** 2  
**Bedrooms:** 3 - 5

**Garage:** 2- to 3-car  
**Plan Number:** D219

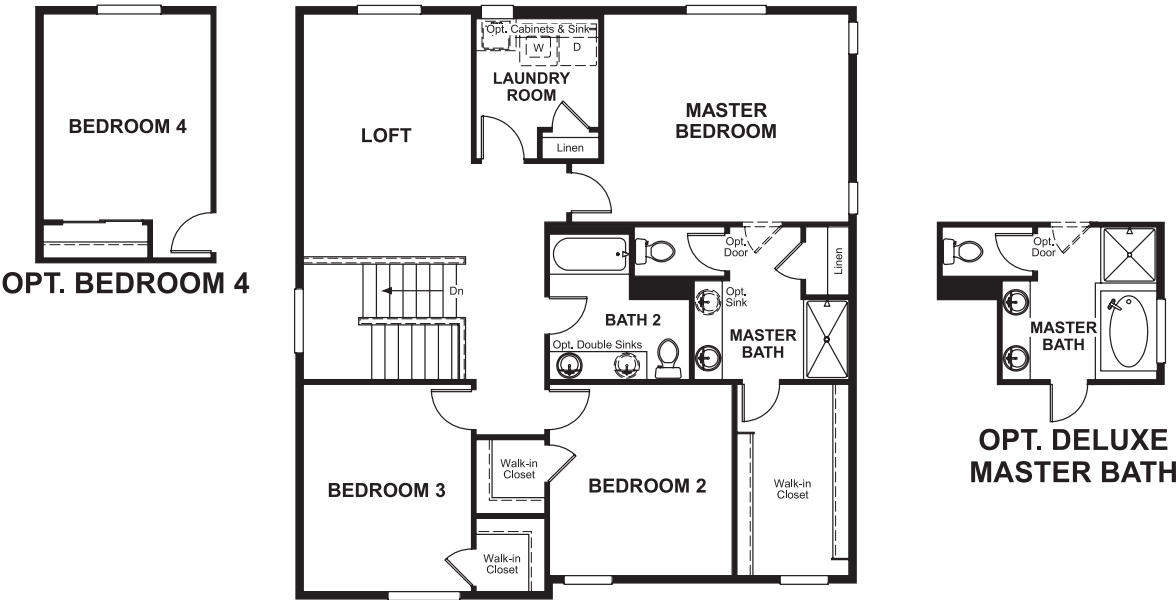
**Floor Plan**  
Main Floor



**THIS PLAN'S PROJECTED  
HERS® INDEX = 52 \***  
Projected Rating Based on Plans – Field Confirmation Required

**How does this floor plan rate?**  
Take a look: **100** = Standard new home\* **130** = Typical resale home\*\*  
The lower the number, the better! Refer to the RESNET® HERS index brochure or go to **www.RESNET.us** for details.

**Floor Plan**  
Second Floor



**What's a HERS® Index?** HERS stands for Home Energy Rating System, a system created by RESNET® to measure home energy efficiency.^  
A Projected HERS index or rating is a computer simulation performed prior to construction by a third-party HERS rater using RESNET-accredited rating software, rated feature and specification data derived from home plans, features and specifications, and other data selected or assumed by the rater. The projected HERS index is approximate and is subject to change without notice. Actual results will vary.

\*This information is presented for education purposes only. The HERS index for a confirmed rating will be determined by a third-party HERS rater based on data gathered from on-site observations and, if required, testing of rated features for a home as featured, optioned, located, oriented and/or built.  
+Standard new home is based on the RESNET® Reference Home definition with a HERS® index of 100 (based on the 2006 International Energy Conservation Code).  
++Typical resale home is based on the U.S. Department of Energy definition with a HERS® index of 130.

^RESNET® has developed the HERS® index to indicate the comparative efficiencies of homes. It is no guarantee that energy efficiencies will be achieved.