

Willow at Emerson Ranch
LYNN



Elevation A

Approx. square feet: 1,900
Stories: 2
Bedrooms: 3 - 4
Garage: 2-car
Plan Number: N707

This home features a large entry, powder bath, a coat closet/storage with an open concept great room, dining and kitchen with a pantry. Upstairs, you have 2 bedrooms, a secondary bath, a loft or optional bedroom and laundry room with optional cabinets and sink. The large master bedroom and bath has a separate shower and soaking tub or an optional extended walk-in shower and a large walk-in closet.

Available elevations:



Elevation A



Elevation B



Elevation C

COMMUNITY LOCATION

205 Willowrun Way
Oakley, CA 94561
925-679-6002

HOME GALLERY

One Harbor Center, Suite 150
Suisun City, CA 94585
800-852-9714



COMMUNITY LOCATION

205 Willowrun Way
Oakley, CA 94561
925-679-6002

HOME GALLERY

One Harbor Center, Suite 150
Suisun City, CA 94585
800-852-9714

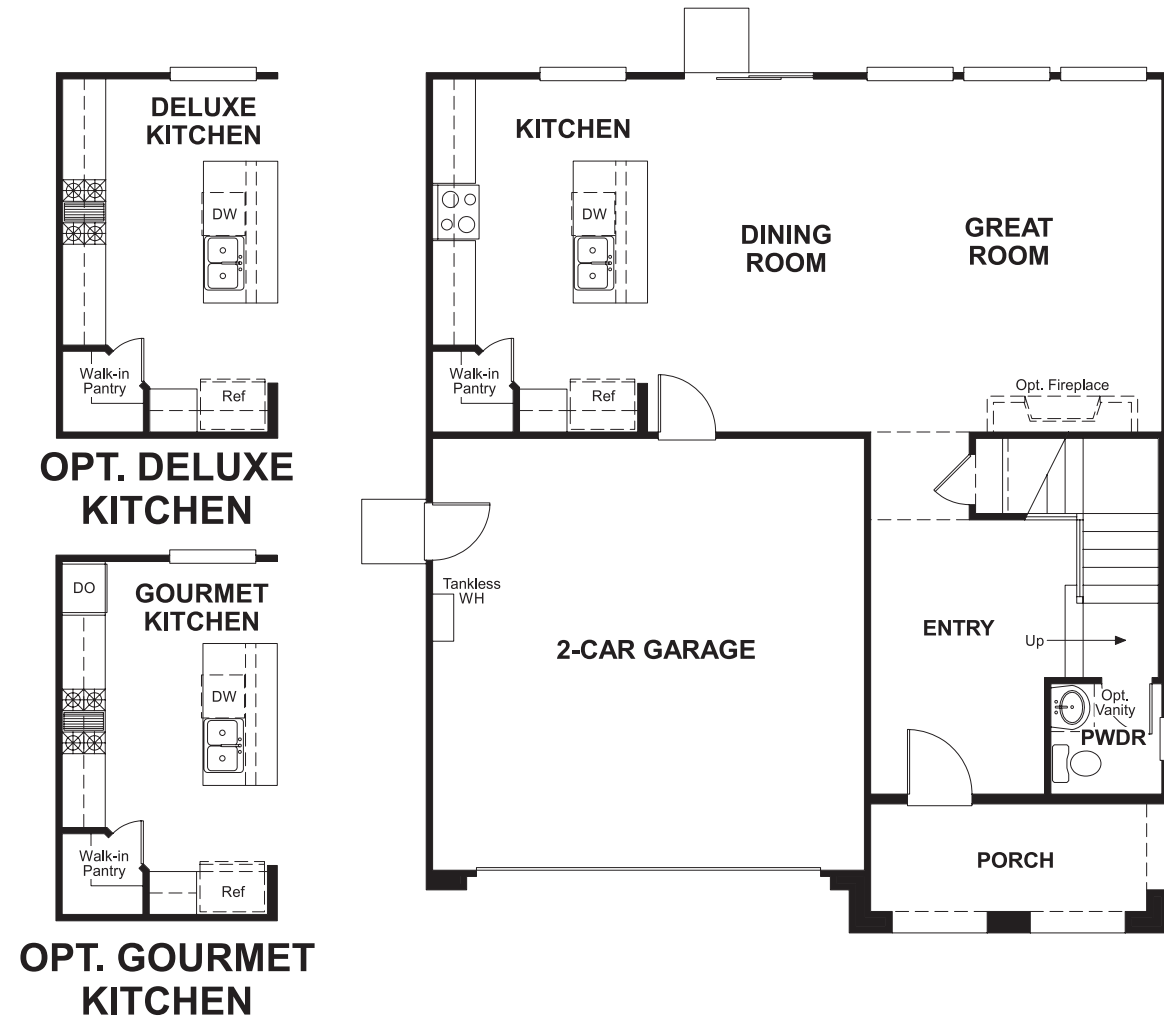


Willow at Emerson Ranch
LYNN

Approx. square feet: 1,900
Stories: 2
Bedrooms: 3 - 4

Garage: 2-car
Plan Number: N707

Floor Plan
Main Floor



Floor Plan
Second Floor



THIS PLAN'S PROJECTED HERS® INDEX = 81 *
Projected Rating Based on Plans – Field Confirmation Required

How does this floor plan rate?
Take a look: **100** = Standard new home* **130** = Typical resale home**
The lower the number, the better! Refer to the RESNET® HERS index brochure or go to www.RESNET.us for details.

What's a HERS® Index? HERS stands for Home Energy Rating System, a system created by RESNET® to measure home energy efficiency.[^]
A Projected HERS index or rating is a computer simulation performed prior to construction by a third-party HERS rater using RESNET-accredited rating software, rated feature and specification data derived from home plans, features and specifications, and other data selected or assumed by the rater. The projected HERS index is approximate and is subject to change without notice. Actual results will vary.

*This information is presented for education purposes only. The HERS index for a confirmed rating will be determined by a third-party HERS rater based on data gathered from on-site observations and, if required, testing of rated features for a home as featured, optioned, located, oriented and/or built.
+Standard new home is based on the RESNET® Reference Home definition with a HERS® index of 100 (based on the 2006 International Energy Conservation Code).
++Typical resale home is based on the U.S. Department of Energy definition with a HERS® index of 130.

^RESNET® has developed the HERS® index to indicate the comparative efficiencies of homes. It is no guarantee that energy efficiencies will be achieved.