

Sycamore at Spencer's Crossing
JULIA



Elevation A

Approx. square feet: 2,800
Stories: 1
Bedrooms: 3 - 4
Garage: 2- to 3-car tandem
Plan Number: S27J

The ranch-style Julia plan offers a spacious great room with an optional fireplace and a well-appointed kitchen with a center island, nook and adjacent prep kitchen, plus a convenient home management center. You'll also appreciate a formal dining room with an adjacent covered courtyard and three generous bedrooms, including a luxurious master suite with an optional deluxe bath. Personalize this plan with a fourth bedroom, an extended covered patio and more.

Available elevations:



Elevation A



Elevation B



Elevation C

COMMUNITY LOCATION

35355 Weather Way
Murrieta, CA 92563
909-579-3288

HOME GALLERY

5171 California Ave
Irvine, CA 92617
949-467-2600



COMMUNITY LOCATION

35355 Weather Way
Murrieta, CA 92563
909-579-3288

HOME GALLERY

5171 California Ave
Irvine, CA 92617
949-467-2600

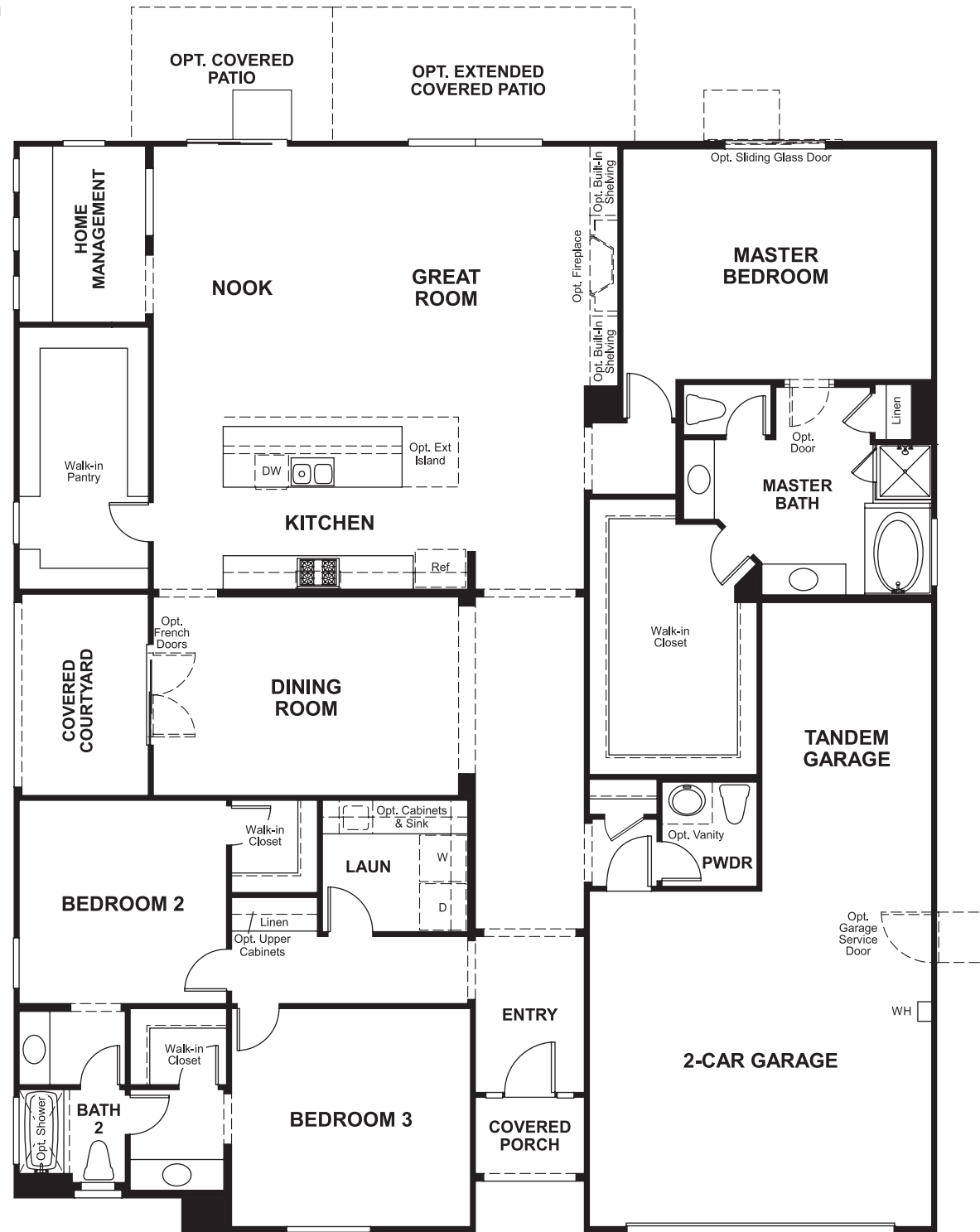


Sycamore at Spencer's Crossing
JULIA

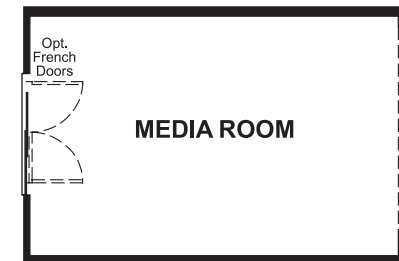
Approx. square feet: 2,800
Stories: 1
Bedrooms: 3 - 4

Garage: 2- to 3-car tandem
Plan Number: S27J

Floor Plan
Main Floor



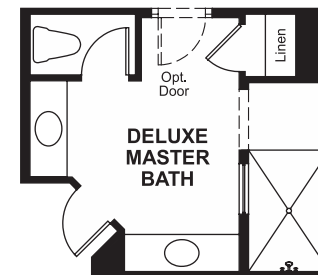
Floor Plan
Main Floor Options



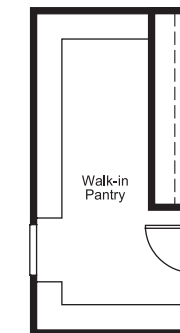
OPT. MEDIA ROOM



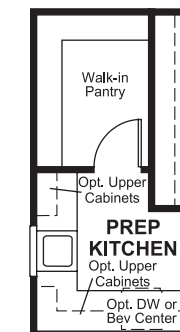
OPT. SLIDING GLASS DOOR AT DINING



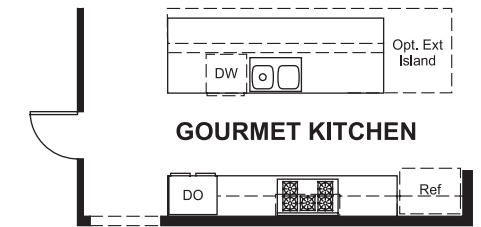
OPT. DELUXE MASTER BATH W/ WALK-IN TILE SHOWER



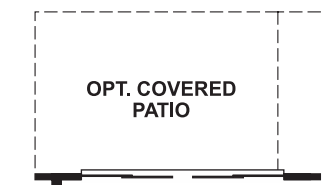
OPT. CABINETS



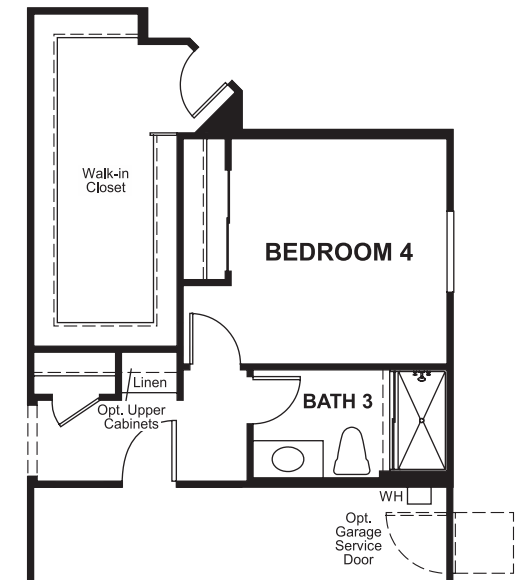
OPT. PREP KITCHEN



OPT. GOURMET KITCHEN



OPT. SLIDING GLASS DOOR AT NOOK



OPT. BEDROOM 4/BATH 3

THIS PLAN'S PROJECTED HERS® INDEX = 69*
Projected Rating Based on Plans – Field Confirmation Required

How does this floor plan rate?
Take a look: **100** = Standard new home* **130** = Typical resale home**
The lower the number, the better! Refer to the RESNET® HERS index brochure or go to www.RESNET.us for details.

What's a HERS® Index? HERS stands for Home Energy Rating System, a system created by RESNET® to measure home energy efficiency.^A
A Projected HERS index or rating is a computer simulation performed prior to construction by a third-party HERS rater using RESNET-accredited rating software, rated feature and specification data derived from home plans, features and specifications, and other data selected or assumed by the rater. The projected HERS index is approximate and is subject to change without notice. Actual results will vary.

*This information is presented for education purposes only. The HERS index for a confirmed rating will be determined by a third-party HERS rater based on data gathered from on-site observations and, if required, testing of rated features for a home as featured, optioned, located, oriented and/or built.
+Standard new home is based on the RESNET® Reference Home definition with a HERS® index of 100 (based on the 2006 International Energy Conservation Code).
++Typical resale home is based on the U.S. Department of Energy definition with a HERS® index of 130.

^ARESNET® has developed the HERS® index to indicate the comparative efficiencies of homes. It is no guarantee that energy efficiencies will be achieved.