

Sycamore at Spencer's Crossing
PERRY



Elevation A

Available elevations:



Elevation A



Elevation B



Elevation C

Approx. square feet: 3,300

Stories: 2

Bedrooms: 5 - 7

Garage: 2- to 3-car

Plan Number: S397

The Perry plan's luxurious living spaces include a main-floor bedroom with full bath, three more bedrooms upstairs and a spacious master suite featuring a roomy walk-in closet and a private bath with double sinks and a separate tub and shower. Need more bedrooms? Add one in lieu of the main-floor study and another in place of the loft. You may even choose a casita instead of the second garage! Other options include a deck, outdoor room, deluxe bath and gourmet kitchen.

COMMUNITY LOCATION

35355 Weather Way
Murrieta, CA 92563
909-579-3288

HOME GALLERY

5171 California Avenue
Irvine, CA 92617
949-467-2600



COMMUNITY LOCATION

35355 Weather Way
Murrieta, CA 92563
909-579-3288

HOME GALLERY

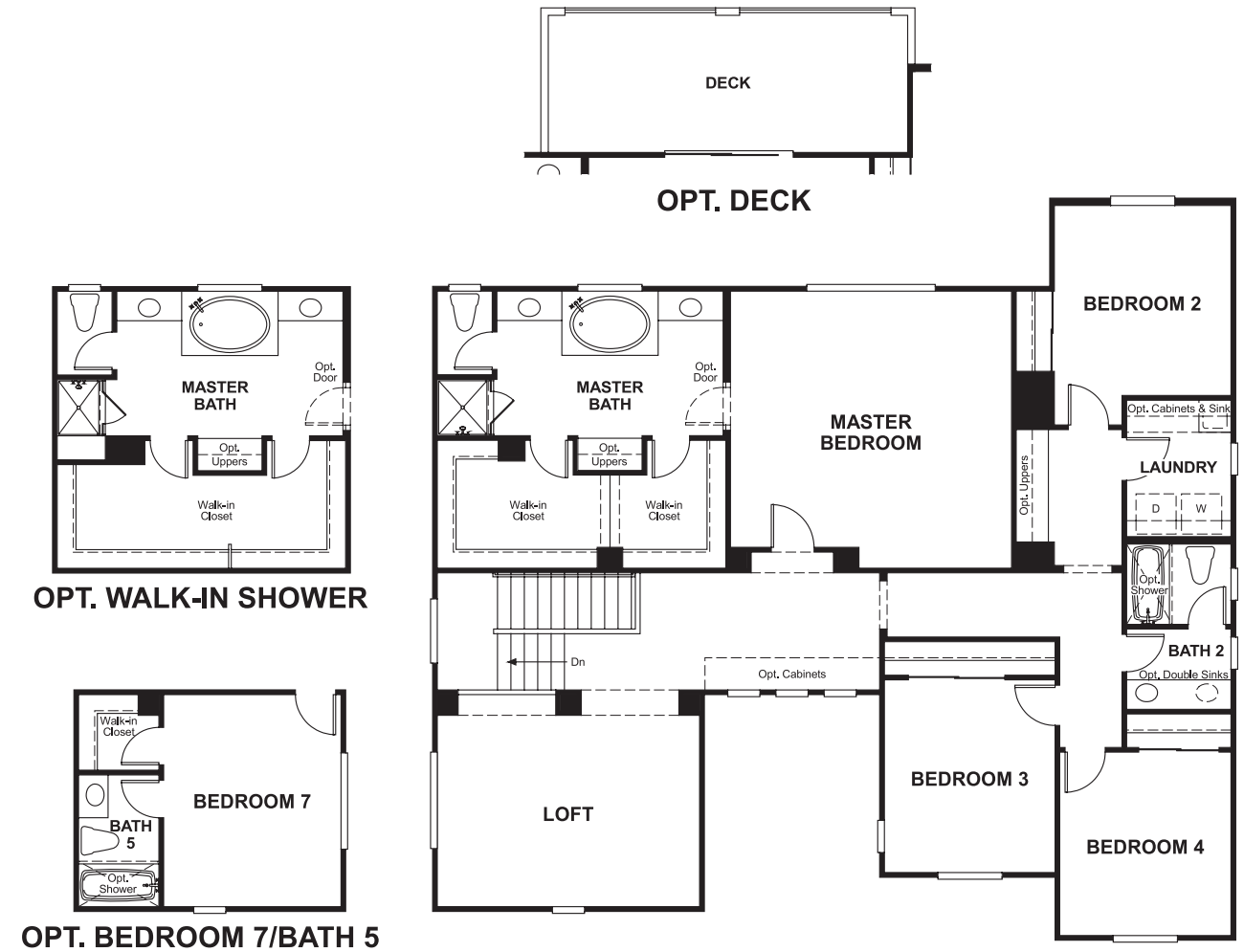
5171 California Avenue
Irvine, CA 92617
949-467-2600



Floor Plan
Main Floor



Floor Plan
Second Floor



THIS PLAN'S PROJECTED HERS® INDEX = 71 *
Projected Rating Based on Plans – Field Confirmation Required

How does this floor plan rate?
Take a look: **100** = Standard new home* **130** = Typical resale home**
The lower the number, the better! Refer to the RESNET® HERS index brochure or go to www.RESNET.us for details.

What's a HERS® Index? HERS stands for Home Energy Rating System, a system created by RESNET® to measure home energy efficiency. A Projected HERS index or rating is a computer simulation performed prior to construction by a third-party HERS rater using RESNET-accredited rating software, rated feature and specification data derived from home plans, features and specifications, and other data selected or assumed by the rater. The projected HERS index is approximate and is subject to change without notice. Actual results will vary.

*This information is presented for education purposes only. The HERS index for a confirmed rating will be determined by a third-party HERS rater based on data gathered from on-site observations and, if required, testing of rated features for a home as featured, optioned, located, oriented and/or built.
+Standard new home is based on the RESNET® Reference Home definition with a HERS® index of 100 (based on the 2006 International Energy Conservation Code).
**Typical resale home is based on the U.S. Department of Energy definition with a HERS® index of 130.

^RESNET® has developed the HERS® index to indicate the comparative efficiencies of homes. It is no guarantee that energy efficiencies will be achieved.