

Campus Fairways
DILLON



Elevation C

Available elevations:



Elevation C



Elevation E

Approx. square feet: 3,150

Stories: 2

Bedrooms: 4 - 6

Garage: 3- to 4-car

Plan Number: W30D

This Dillon plan features a dramatic two-story entry, a formal dining room, a gourmet kitchen with central island and nook and a spacious great room with fireplace. Other highlights include a private study and a generous master suite with walk-in closet. Personalize this plan with a covered patio, chef's kitchen and more.

COMMUNITY LOCATION

4440 Campus Drive North East
Lacey, WA 98516
253-693-4800

HOME GALLERY

20829 72nd Avenue South, Suite 115
Kent, WA 98032
253-446-7277



COMMUNITY LOCATION

4440 Campus Drive North East
Lacey, WA 98516
253-693-4800

HOME GALLERY

20829 72nd Avenue South, Suite 115
Kent, WA 98032
253-446-7277

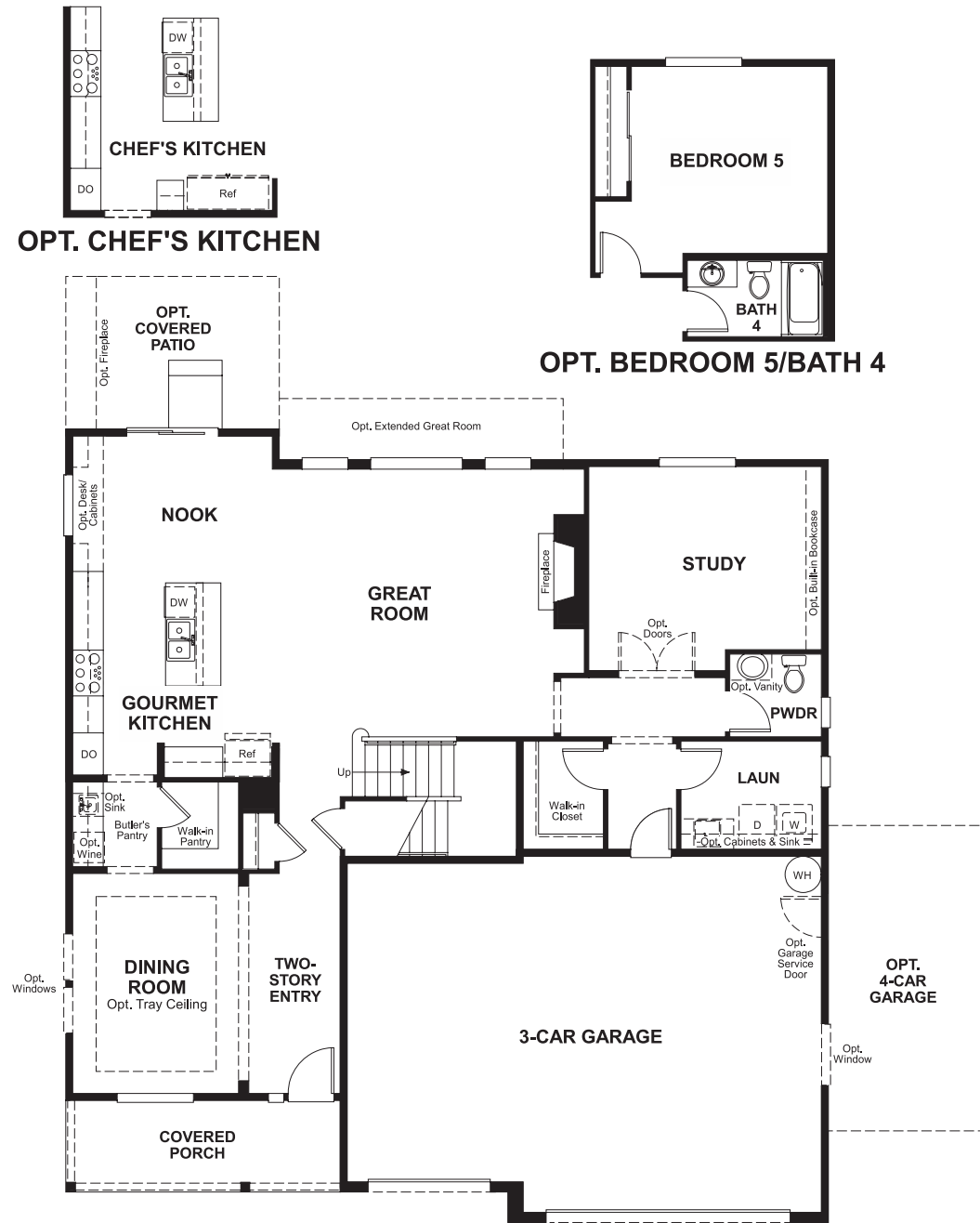


Campus Fairways
DILLON

Approx. square feet: 3,150
Stories: 2
Bedrooms: 4 - 6

Garage: 3- to 4-car
Plan Number: W30D

Floor Plan
Main Floor



Floor Plan
Second Floor



**THIS PLAN'S PROJECTED
HERS® INDEX = 60***
Projected Rating Based on Plans – Field Confirmation Required

How does this floor plan rate?
Take a look: **100** = Standard new home* **130** = Typical resale home**
The lower the number, the better! Refer to the RESNET® HERS index brochure or go to www.RESNET.us for details.

What's a HERS® Index? HERS stands for Home Energy Rating System, a system created by RESNET® to measure home energy efficiency. A Projected HERS index or rating is a computer simulation performed prior to construction by a third-party HERS rater using RESNET-accredited rating software, rated feature and specification data derived from home plans, features and specifications, and other data selected or assumed by the rater. The projected HERS index is approximate and is subject to change without notice. Actual results will vary.

*This information is presented for education purposes only. The HERS index for a confirmed rating will be determined by a third-party HERS rater based on data gathered from on-site observations and, if required, testing of rated features for a home as featured, optioned, located, oriented and/or built.
+Standard new home is based on the RESNET® Reference Home definition with a HERS® index of 100 (based on the 2006 International Energy Conservation Code).
**Typical resale home is based on the U.S. Department of Energy definition with a HERS® index of 130.

^RESNET® has developed the HERS® index to indicate the comparative efficiencies of homes. It is no guarantee that energy efficiencies will be achieved.