

Sunrise at Mill Valley
LAYLA

Approx. square feet: 2,200
Stories: 2
Bedrooms: 4 - 6

Garage: 2-car
Plan Number: W698

Sunrise at Mill Valley
LAYLA

Approx. square feet: 2,200
Stories: 2
Bedrooms: 4 - 6
Garage: 2-car
Plan Number: W698

The Layla floor plan offers a spacious two-story great room with fireplace and private study just off the entry. At the back of the home, the generous dining room has a view of the covered patio and opens onto the gourmet kitchen—complete with center island, pantry and ample countertop and cabinet space. Upstairs, enjoy a convenient laundry and four inviting bedrooms—including the master with a walk-in closet and luxurious bath. Options include a master retreat, a chef's kitchen, a loft, additional bedrooms and baths, a deluxe master bath and a multi-slide patio door.

Site Map



Elevation C

Available elevations:



Elevation C



Elevation D

COMMUNITY LOCATION
227 182nd Street South East
Bothell, WA 98012
425-654-0731

HOME GALLERY
20829 72nd Avenue South, Suite 115
Kent, WA 98032
253-446-7277

COMMUNITY LOCATION
227 182nd Street South East
Bothell, WA 98012
425-654-0731

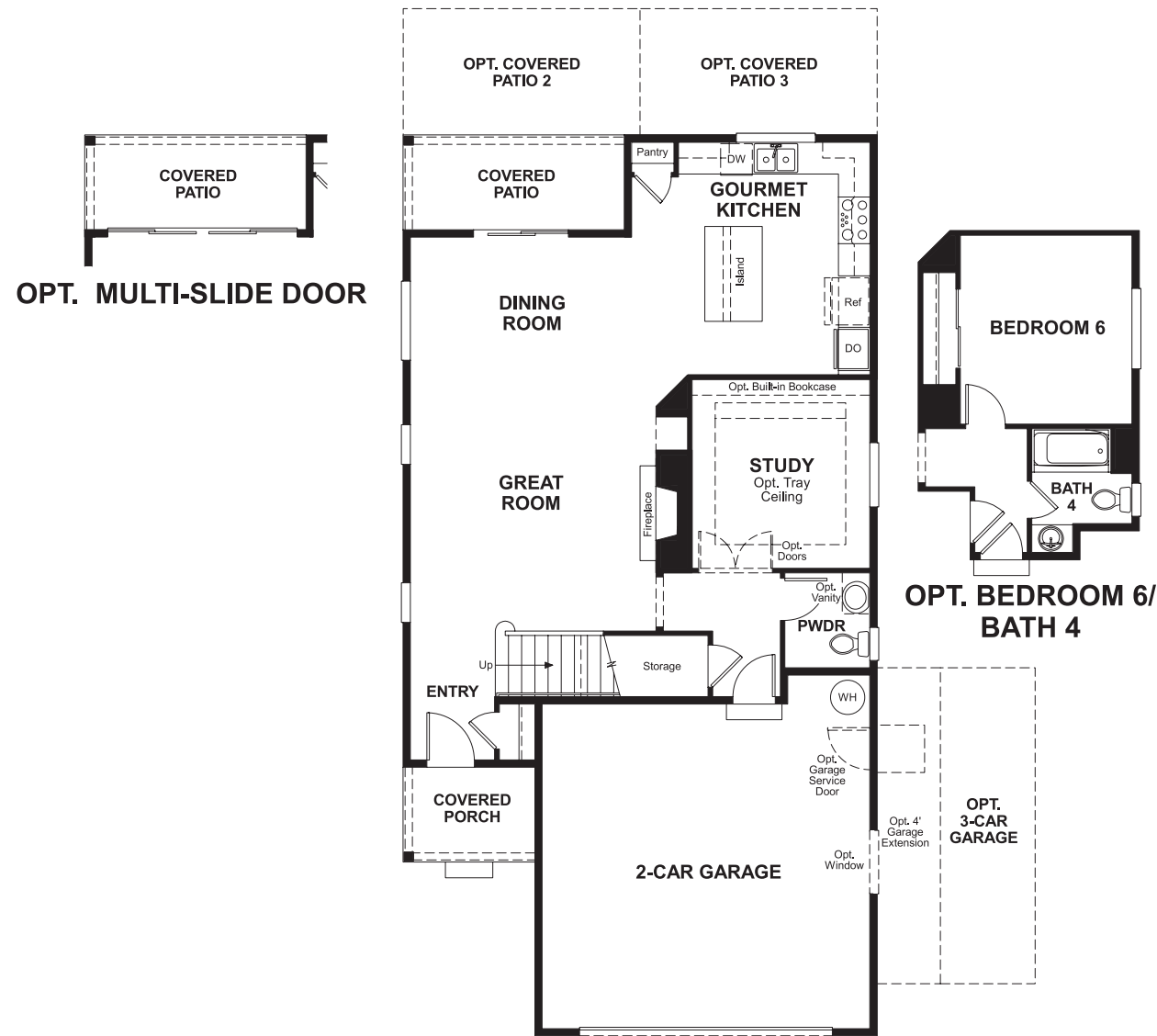
HOME GALLERY
20829 72nd Avenue South, Suite 115
Kent, WA 98032
253-446-7277

Sunrise at Mill Valley
LAYLA

Approx. square feet: 2,200
Stories: 2
Bedrooms: 4 - 6

Garage: 2-car
Plan Number: W698

Floor Plan
Main Floor



Floor Plan
Second Floor



**THIS PLAN'S PROJECTED
HERS® INDEX = 54***
Projected Rating Based on Plans – Field Confirmation Required

How does this floor plan rate?
Take a look: **100** = Standard new home* **130** = Typical resale home**
The lower the number, the better! Refer to the RESNET® HERS index brochure or go to www.RESNET.us for details.

What's a HERS® Index? HERS stands for Home Energy Rating System, a system created by RESNET® to measure home energy efficiency.[^]
A Projected HERS index or rating is a computer simulation performed prior to construction by a third-party HERS rater using RESNET-accredited rating software, rated feature and specification data derived from home plans, features and specifications, and other data selected or assumed by the rater. The projected HERS index is approximate and is subject to change without notice. Actual results will vary.

*This information is presented for education purposes only. The HERS index for a confirmed rating will be determined by a third-party HERS rater based on data gathered from on-site observations and, if required, testing of rated features for a home as featured, optioned, located, oriented and/or built.
+Standard new home is based on the RESNET® Reference Home definition with a HERS® index of 100 (based on the 2006 International Energy Conservation Code).
**Typical resale home is based on the U.S. Department of Energy definition with a HERS® index of 130.

[^]RESNET® has developed the HERS® index to indicate the comparative efficiencies of homes. It is no guarantee that energy efficiencies will be achieved.