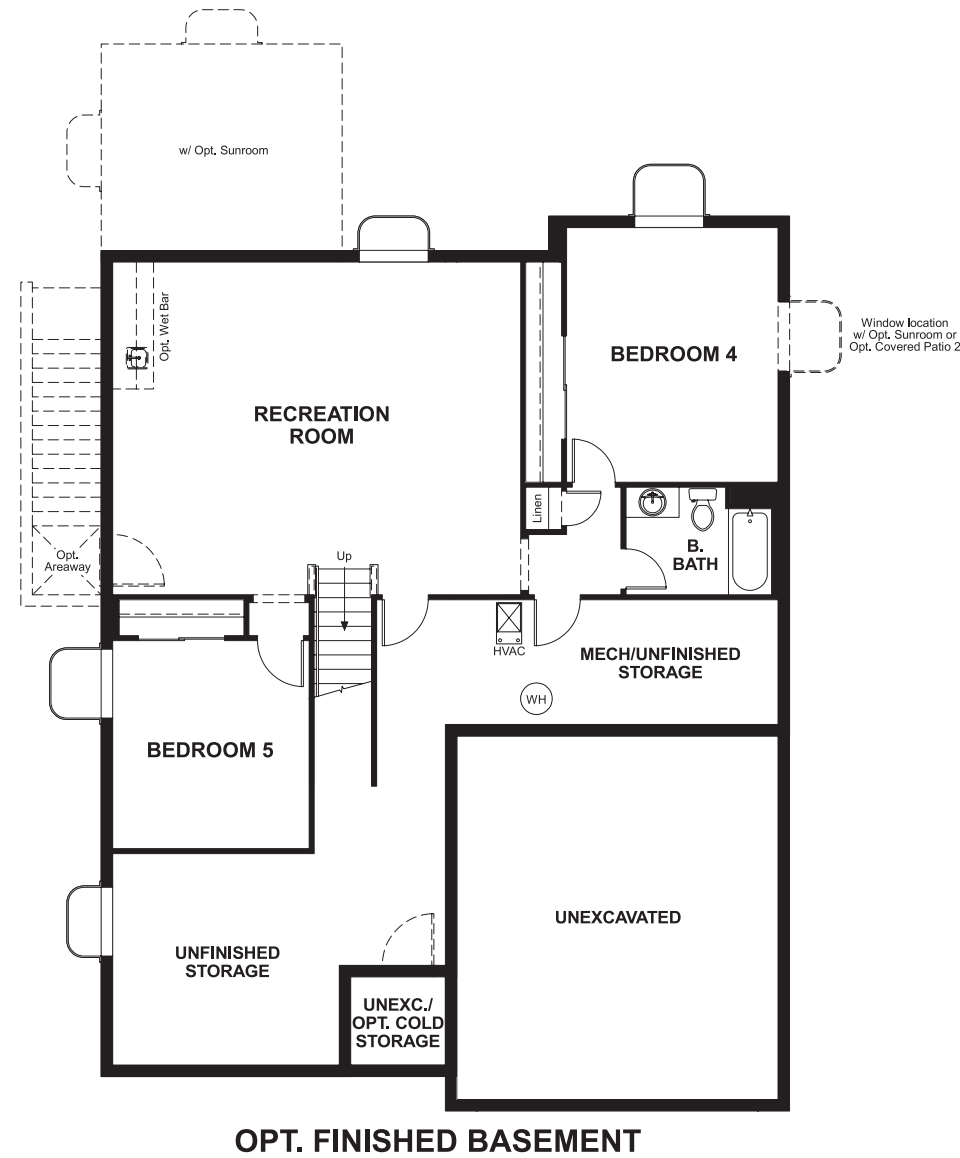


Orem Orchards
PONDEROSA

Approx. square feet: 1,520
Stories: 1
Bedrooms: 3 - 5

Garage: 2- to 3-car
Plan Number: U149

Floor Plan
Basement



Elevation A

Available elevations:



Elevation B



Elevation C



Elevation D



Elevation E

Approx. square feet: 1,520
Stories: 1
Bedrooms: 3 - 5
Garage: 2- to 3-car
Plan Number: U149

Rambler home, with optional corner fireplace in the great room, optional sunroom, and optional 3-car or extended garage. A study is an option in place of bedroom 2. Finished basement includes recreation room, a full bathroom, and 2 bedrooms. Kitchen has a dining nook and island. Deluxe master bath has a walk-in shower option.

COMMUNITY LOCATION
400 West 350 South
Orem, UT 84058
801-545-3429

HOME GALLERY
849 West Levoy Drive #108
Salt Lake City, UT 84123
801-545-3435



COMMUNITY LOCATION
400 West 350 South
Orem, UT 84058
801-545-3429

HOME GALLERY
849 West Levoy Drive #108
Salt Lake City, UT 84123
801-545-3435

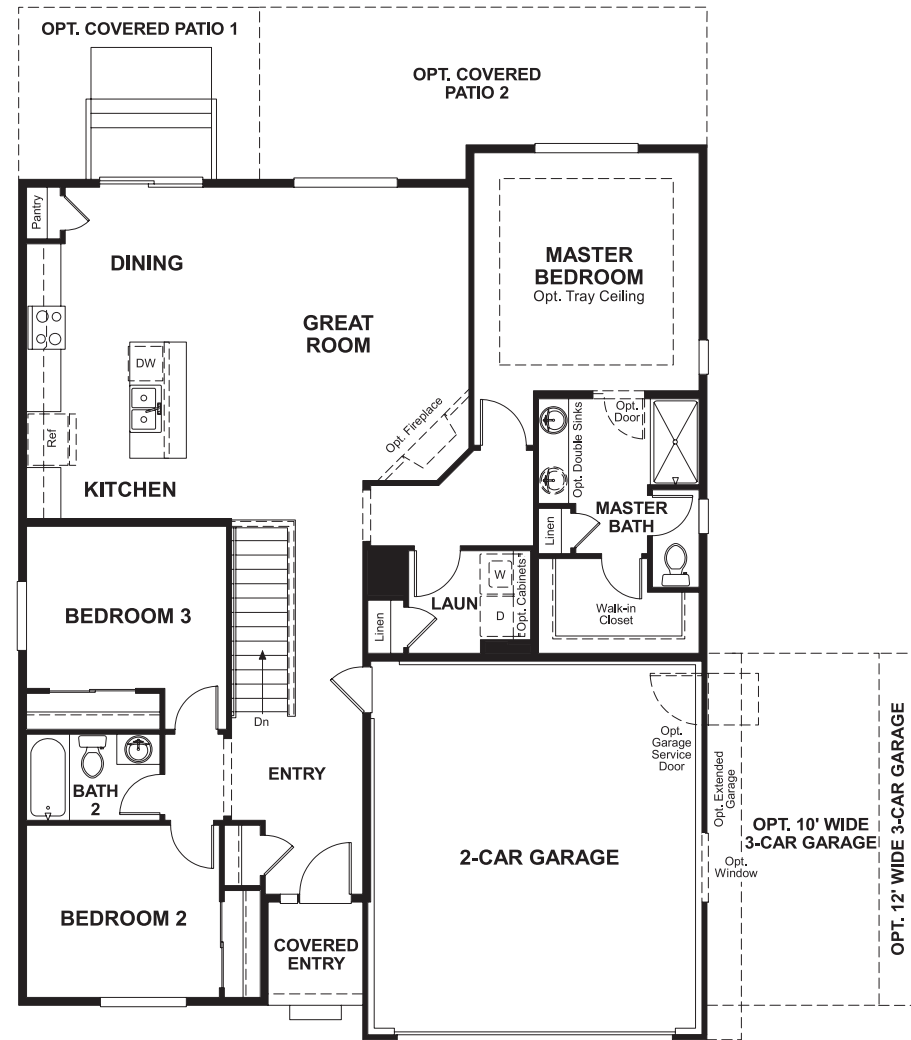


Orem Orchards
PONDEROSA

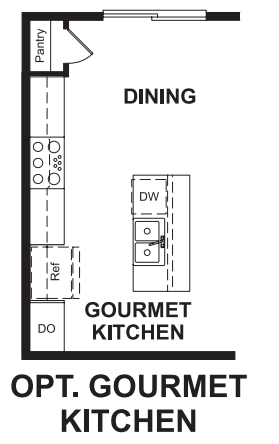
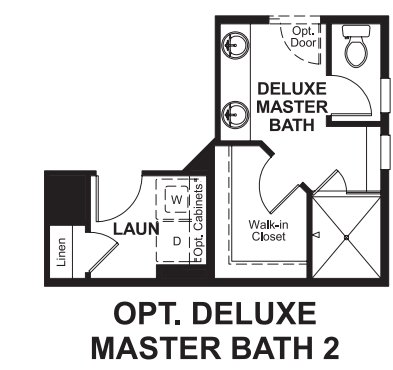
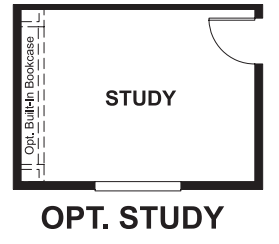
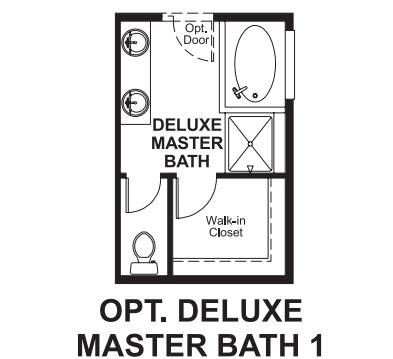
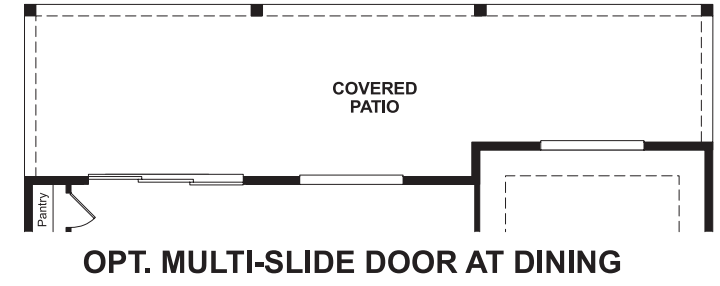
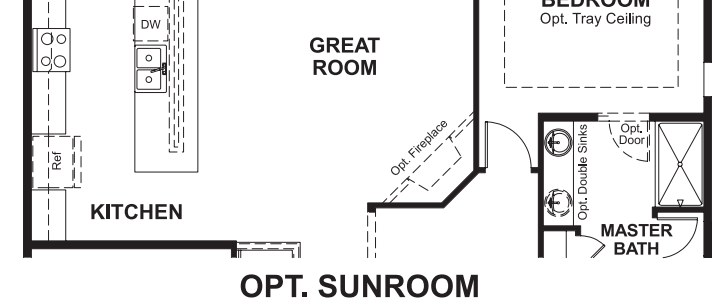
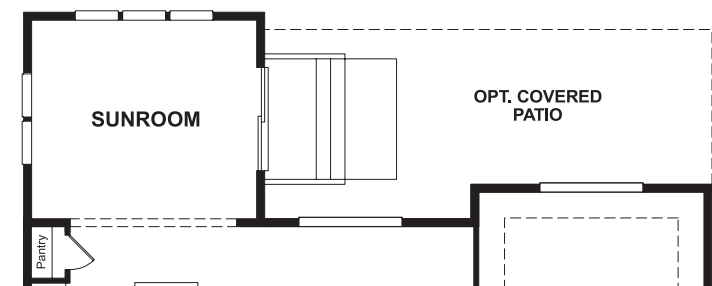
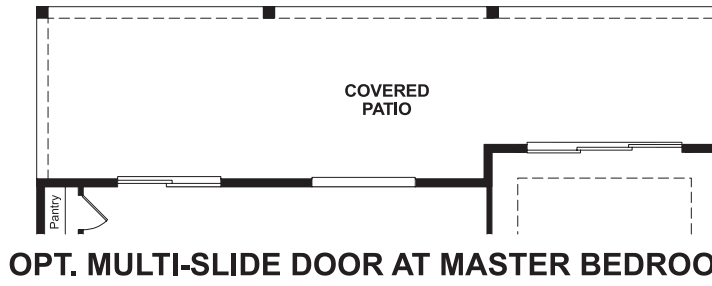
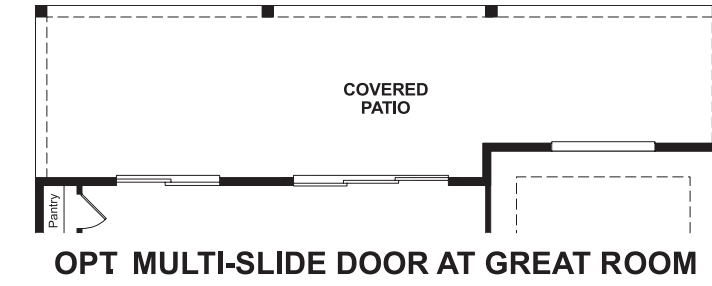
Approx. square feet: 1,520
Stories: 1
Bedrooms: 3 - 5

Garage: 2- to 3-car
Plan Number: U149

Floor Plan
Main Floor



Floor Plan
Main Floor Options



THIS PLAN'S PROJECTED HERS® INDEX = 66*
Projected Rating Based on Plans – Field Confirmation Required

How does this floor plan rate?
Take a look: 100 = Standard new home* 130 = Typical resale home**
The lower the number, the better! Refer to the RESNET® HERS index brochure or go to www.RESNET.us for details.

What's a HERS® Index? HERS stands for Home Energy Rating System, a system created by RESNET® to measure home energy efficiency.[^]
A Projected HERS index or rating is a computer simulation performed prior to construction by a third-party HERS rater using RESNET-accredited rating software, rated feature and specification data derived from home plans, features and specifications, and other data selected or assumed by the rater. The projected HERS index is approximate and is subject to change without notice. Actual results will vary.

*This information is presented for education purposes only. The HERS index for a confirmed rating will be determined by a third-party HERS rater based on data gathered from on-site observations and, if required, testing of rated features for a home as featured, optioned, located, oriented and/or built.
+Standard new home is based on the RESNET® Reference Home definition with a HERS® index of 100 (based on the 2006 International Energy Conservation Code).
**Typical resale home is based on the U.S. Department of Energy definition with a HERS® index of 130.

[^]RESNET® has developed the HERS® index to indicate the comparative efficiencies of homes. It is no guarantee that energy efficiencies will be achieved.