

The Estates at Sunrise Vista  
**ROBERT**



**Elevation A**

**Available elevations:**



**Elevation A**



**Elevation B**



**Elevation C**

**Approx. square feet: 4,000**

**Stories: 1**

**Bedrooms: 4**

**Garage: 3-car**

**Plan Number: P40R**

In addition to a luxurious master suite, the ranch-style Robert plan has a guest suite, complete with bedroom, living room, kitchenette and private bath. Other highlights of this impressive plan include a private study, a formal dining room, a spacious great room with optional fireplace and a gourmet kitchen with an expansive island, breakfast nook and optional professional features. A covered patio is also included. Make this home your own with an optional game room, office and more!



**COMMUNITY LOCATION**

31309 North 55<sup>th</sup> Street  
Cave Creek, AZ 85266  
877-444-1485

**HOME GALLERY**

16427 North Scottsdale Road  
Scottsdale, AZ 85254  
877-444-1485



**COMMUNITY LOCATION**

31309 North 55<sup>th</sup> Street  
Cave Creek, AZ 85266  
877-444-1485

**HOME GALLERY**

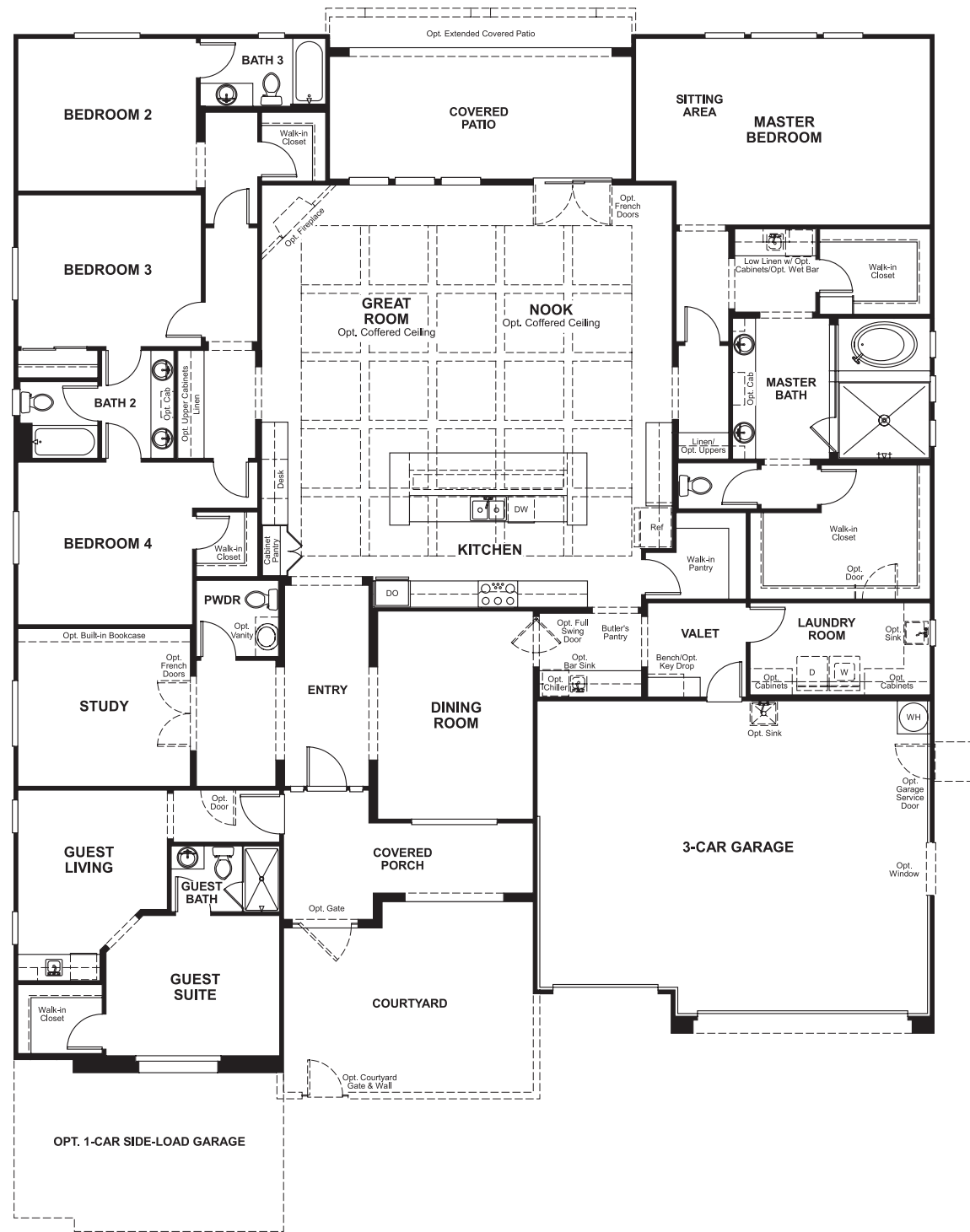
16427 North Scottsdale Road  
Scottsdale, AZ 85254  
877-444-1485

The Estates at Sunrise Vista  
**ROBERT**

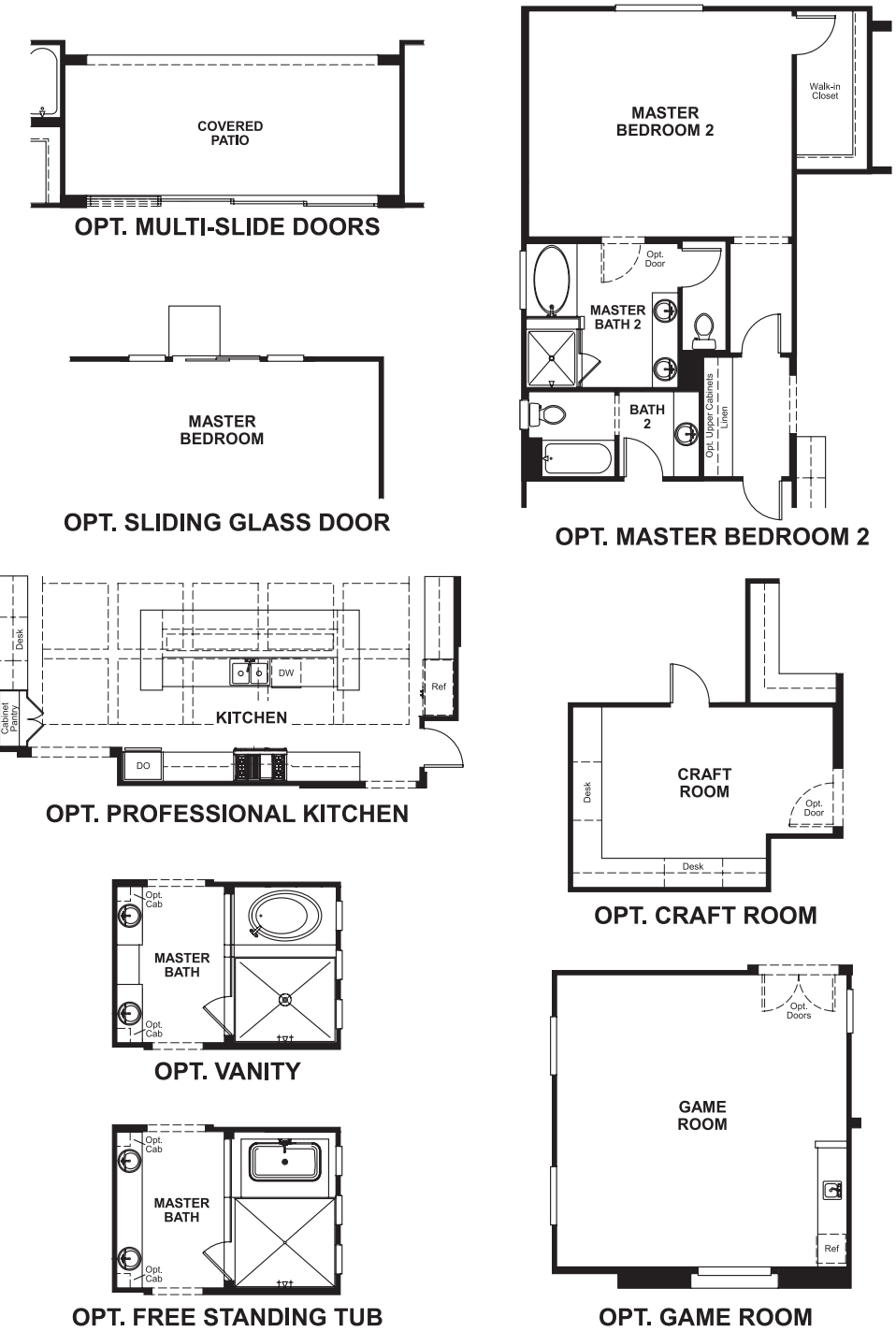
Approx. square feet: 4,000  
Stories: 1  
Bedrooms: 4

Garage: 3-car  
Plan Number: P40R

**Floor Plan**  
Main Floor



**Floor Plan**  
Main Floor Options



**THIS PLAN'S PROJECTED  
HERS® INDEX = 61** \*  
Projected Rating Based on Plans – Field Confirmation Required

**How does this floor plan rate?**  
Take a look: 100 = Standard new home\* 130 = Typical resale home\*\*  
The lower the number, the better! Refer to the RESNET® HERS index brochure or go to [www.RESNET.us](http://www.RESNET.us) for details.

**What's a HERS® Index?** HERS stands for Home Energy Rating System, a system created by RESNET® to measure home energy efficiency.<sup>^</sup>  
A Projected HERS index or rating is a computer simulation performed prior to construction by a third-party HERS rater using RESNET-accredited rating software, rated feature and specification data derived from home plans, features and specifications, and other data selected or assumed by the rater. The projected HERS index is approximate and is subject to change without notice. Actual results will vary.

\*This information is presented for education purposes only. The HERS index for a confirmed rating will be determined by a third-party HERS rater based on data gathered from on-site observations and, if required, testing of rated features for a home as featured, optioned, located, oriented and/or built.  
+Standard new home is based on the RESNET® Reference Home definition with a HERS® index of 100 (based on the 2006 International Energy Conservation Code).  
\*\*Typical resale home is based on the U.S. Department of Energy definition with a HERS® index of 130.

<sup>^</sup>RESNET® has developed the HERS® index to indicate the comparative efficiencies of homes. It is no guarantee that energy efficiencies will be achieved.