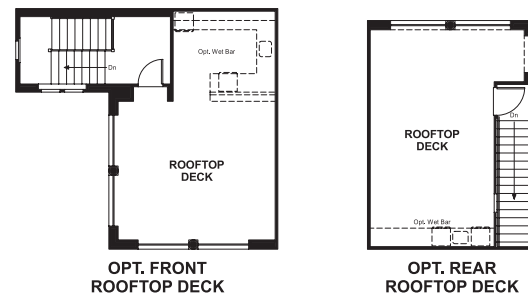


The Summit at San Elijo  
**HUDSON**

**Approx. square feet:** 4,350  
**Stories:** 2  
**Bedrooms:** 3 - 5

**Garage:** 2- to 3-car  
**Plan Number:** S693

**Floor Plan**  
Rooftop Terrace



The Summit at San Elijo  
**HUDSON**

**Approx. square feet:** 4,350  
**Stories:** 2  
**Bedrooms:** 3 - 5  
**Garage:** 2- to 3-car  
**Plan Number:** S693

The Hudson plan is designed for relaxing and entertaining, with a quiet study, formal dining room, spacious great room and versatile club room with optional beverage bar. The gourmet kitchen boasts a walk-in pantry, center island, separate prep kitchen and nook, and the covered patio is ideal for outdoor dining. Upstairs, you'll find a bonus room, which can be optioned as an extra bedroom, and a luxurious master suite with dual closets and an expansive deck.



**Elevation A**

**Available elevations:**



**Elevation A**



**Elevation C**



**Elevation E**

**COMMUNITY LOCATION**  
558 Ledge Street  
San Marcos, CA 92078  
760-653-7010

**HOME GALLERY**  
5171 California Avenue  
Irvine, CA 92617  
800-852-9714



**COMMUNITY LOCATION**  
558 Ledge Street  
San Marcos, CA 92078  
760-653-7010

**HOME GALLERY**  
5171 California Avenue  
Irvine, CA 92617  
800-852-9714

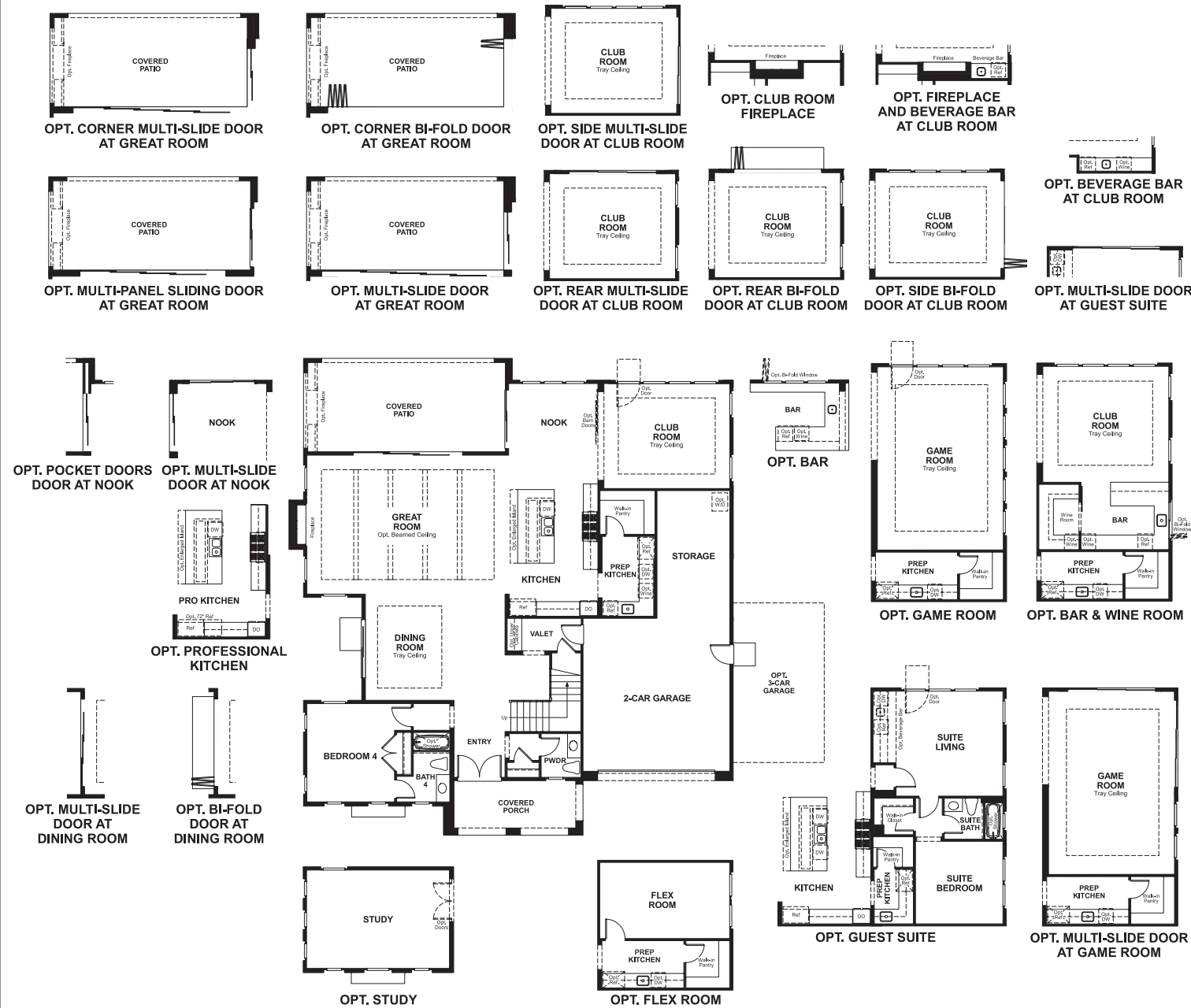


The Summit at San Elijo  
**HUDSON**

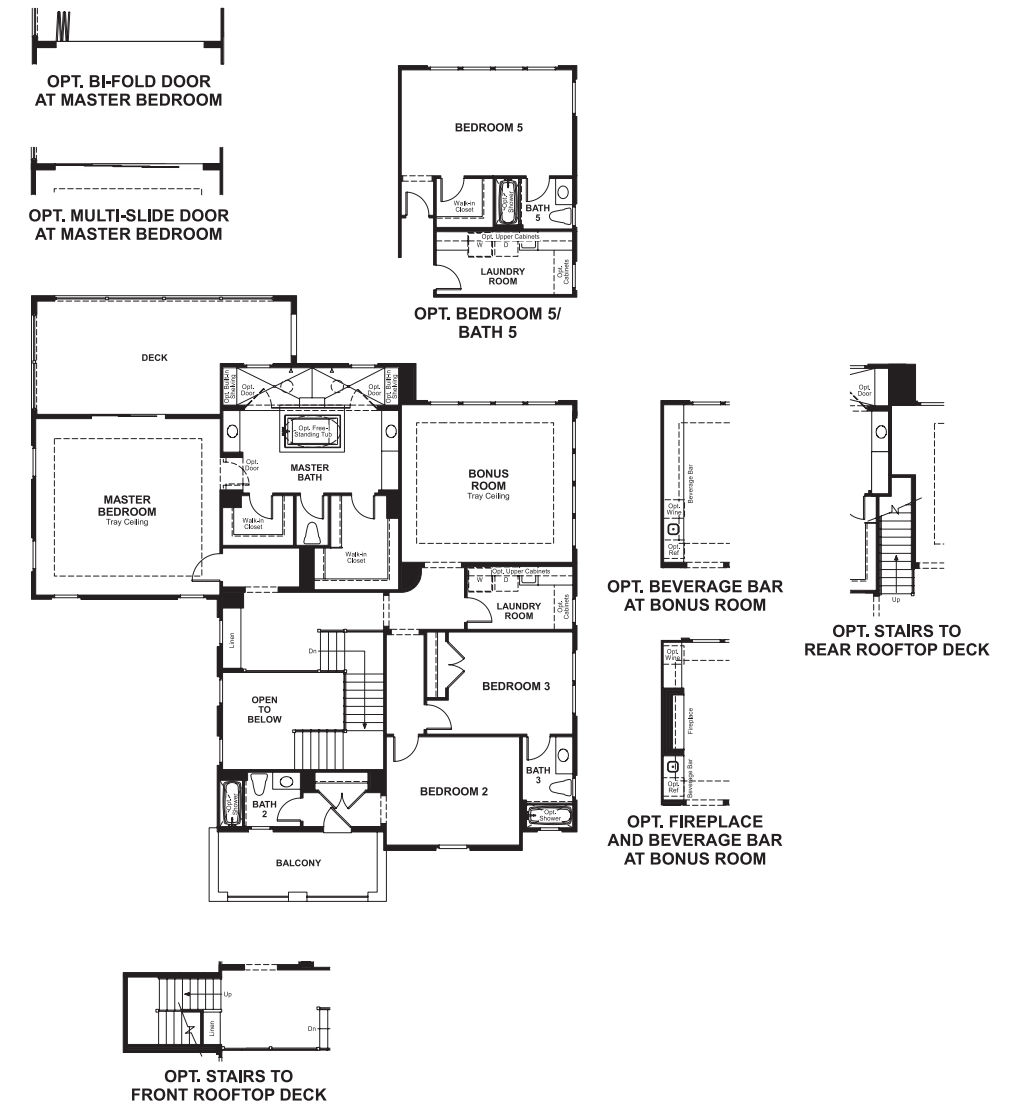
Approx. square feet: 4,350  
Stories: 2  
Bedrooms: 3 - 5

Garage: 2- to 3-car  
Plan Number: S693

**Floor Plan**  
Main Floor



**Floor Plan**  
Second Floor



**THIS PLAN'S PROJECTED  
HERS® INDEX = 68\***  
Projected Rating Based on Plans – Field Confirmation Required

**How does this floor plan rate?**  
Take a look: **100** = Standard new home\* **130** = Typical resale home\*\*  
The lower the number, the better! Refer to the RESNET® HERS index brochure or go to [www.RESNET.us](http://www.RESNET.us) for details.

**What's a HERS® Index?** HERS stands for Home Energy Rating System, a system created by RESNET® to measure home energy efficiency.<sup>^</sup>  
A Projected HERS index or rating is a computer simulation performed prior to construction by a third-party HERS rater using RESNET-accredited rating software, rated feature and specification data derived from home plans, features and specifications, and other data selected or assumed by the rater. The projected HERS index is approximate and is subject to change without notice. Actual results will vary.

\*This information is presented for education purposes only. The HERS index for a confirmed rating will be determined by a third-party HERS rater based on data gathered from on-site observations and, if required, testing of rated features for a home as featured, optioned, located, oriented and/or built.  
+Standard new home is based on the RESNET® Reference Home definition with a HERS® index of 100 (based on the 2006 International Energy Conservation Code).  
\*\*Typical resale home is based on the U.S. Department of Energy definition with a HERS® index of 130.

<sup>^</sup>RESNET® has developed the HERS® index to indicate the comparative efficiencies of homes. It is no guarantee that energy efficiencies will be achieved.