

Granite Falls
DESIREE



Elevation A

Approx. square feet: 2,850
Stories: 2
Bedrooms: 4 - 5
Garage: 3-car
Plan Number: L28P

The main floor of the beautiful Desiree plan boasts a private study, a formal dining room and a convenient master suite with a deluxe bath and oversized walk-in closet. You'll also admire the spacious great room and gourmet kitchen with walk-in pantry and breakfast nook. Upstairs, you'll find a full bath and three large bedrooms, one of which can be optioned as a second master suite. An optional loft is also available.

Available elevations:



Elevation A



Elevation B



Elevation C

COMMUNITY LOCATION

5527 Powell Prairie Avenue
 Las Vegas, NV 89085
 702-638-4440

HOME GALLERY

7770 South Dean Martin Drive, Suite 308
 Las Vegas, NV 89139
 702-617-8400



COMMUNITY LOCATION

5527 Powell Prairie Avenue
 Las Vegas, NV 89085
 702-638-4440

HOME GALLERY

7770 South Dean Martin Drive, Suite 308
 Las Vegas, NV 89139
 702-617-8400

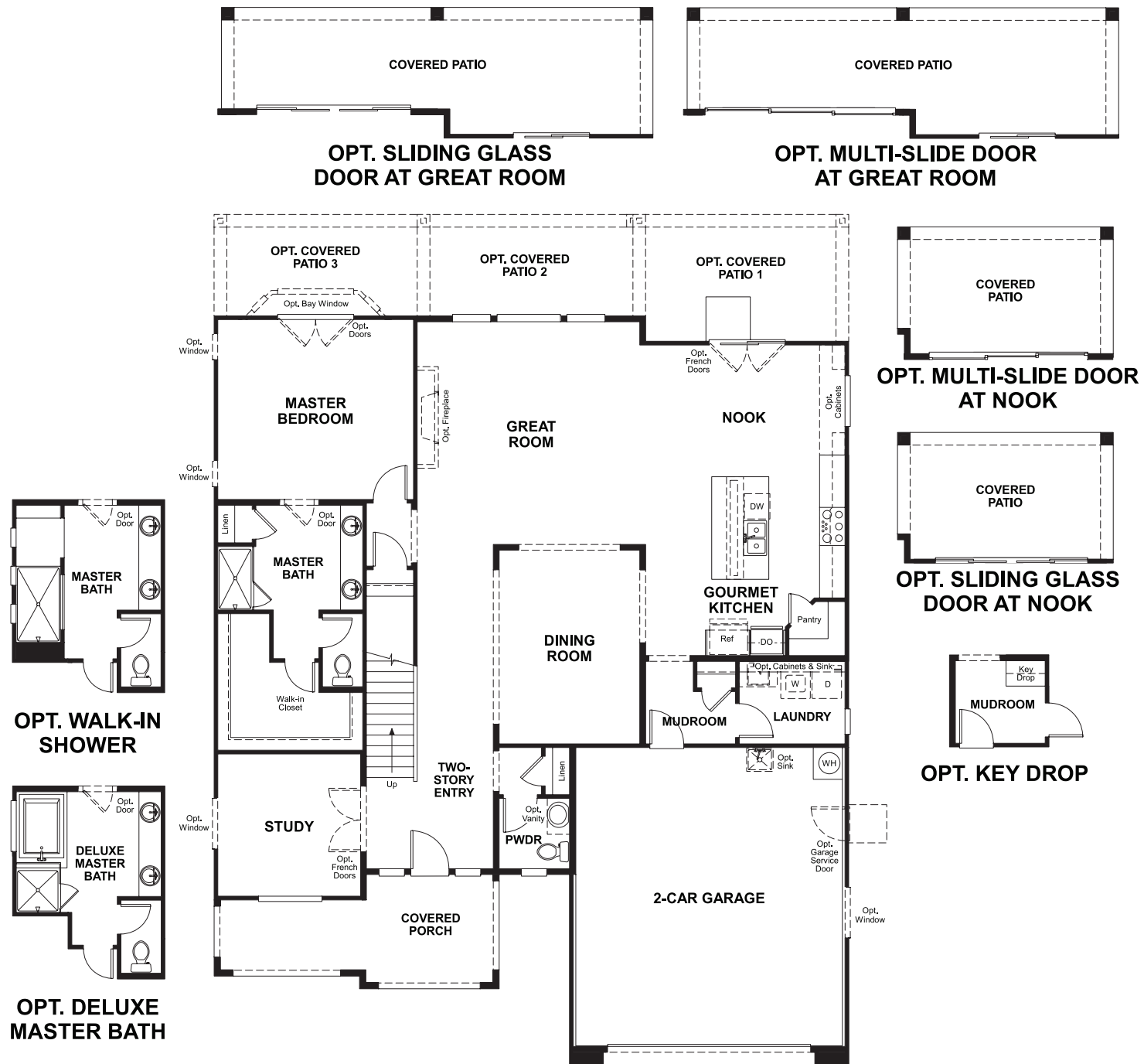


Granite Falls
DESIREE

Approx. square feet: 2,850
Stories: 2
Bedrooms: 4 - 5

Garage: 3-car
Plan Number: L28P

Floor Plan
Main Floor



Floor Plan
Second Floor



**THIS PLAN'S PROJECTED
HERS® INDEX = 64***
Projected Rating Based on Plans – Field Confirmation Required

How does this floor plan rate?
Take a look: **100** = Standard new home* **130** = Typical resale home**
The lower the number, the better! Refer to the RESNET® HERS index brochure or go to www.RESNET.us for details.

What's a HERS® Index? HERS stands for Home Energy Rating System, a system created by RESNET® to measure home energy efficiency.[^]
A Projected HERS index or rating is a computer simulation performed prior to construction by a third-party HERS rater using RESNET-accredited rating software, rated feature and specification data derived from home plans, features and specifications, and other data selected or assumed by the rater. The projected HERS index is approximate and is subject to change without notice. Actual results will vary.

*This information is presented for education purposes only. The HERS index for a confirmed rating will be determined by a third-party HERS rater based on data gathered from on-site observations and, if required, testing of rated features for a home as featured, optioned, located, oriented and/or built.
+Standard new home is based on the RESNET® Reference Home definition with a HERS® index of 100 (based on the 2006 International Energy Conservation Code).
++Typical resale home is based on the U.S. Department of Energy definition with a HERS® index of 130.

[^]RESNET® has developed the HERS® index to indicate the comparative efficiencies of homes. It is no guarantee that energy efficiencies will be achieved.