

Blueberry Lane
FOSTER



Elevation B

Available elevations:



Elevation B



Elevation C



Elevation D

Approx. square feet: 2,350

Stories: 2

Bedrooms: 3 - 6

Garage: 2- to 3-car

Plan Number: W598

The Foster plan offers a large dining room, an airy great room with a relaxing fireplace and an inviting kitchen with an immense center island. The optional covered patio would be perfect for entertaining, and the quiet study can be built as an extra bedroom. Upstairs, enjoy a roomy loft, a lavish master suite with a private bath, two additional bedrooms and a shared bath. Personalization options include a gourmet or chef's kitchen, sunroom, deluxe master bath and finished basement with bedroom and bath.

COMMUNITY LOCATION

19651 11th Place South
Des Moines, WA 98148
206-757-2818

HOME GALLERY

20829 72nd Avenue South, Suite 115
Kent, WA 98032
253-446-7277



COMMUNITY LOCATION

19651 11th Place South
Des Moines, WA 98148
206-757-2818

HOME GALLERY

20829 72nd Avenue South, Suite 115
Kent, WA 98032
253-446-7277

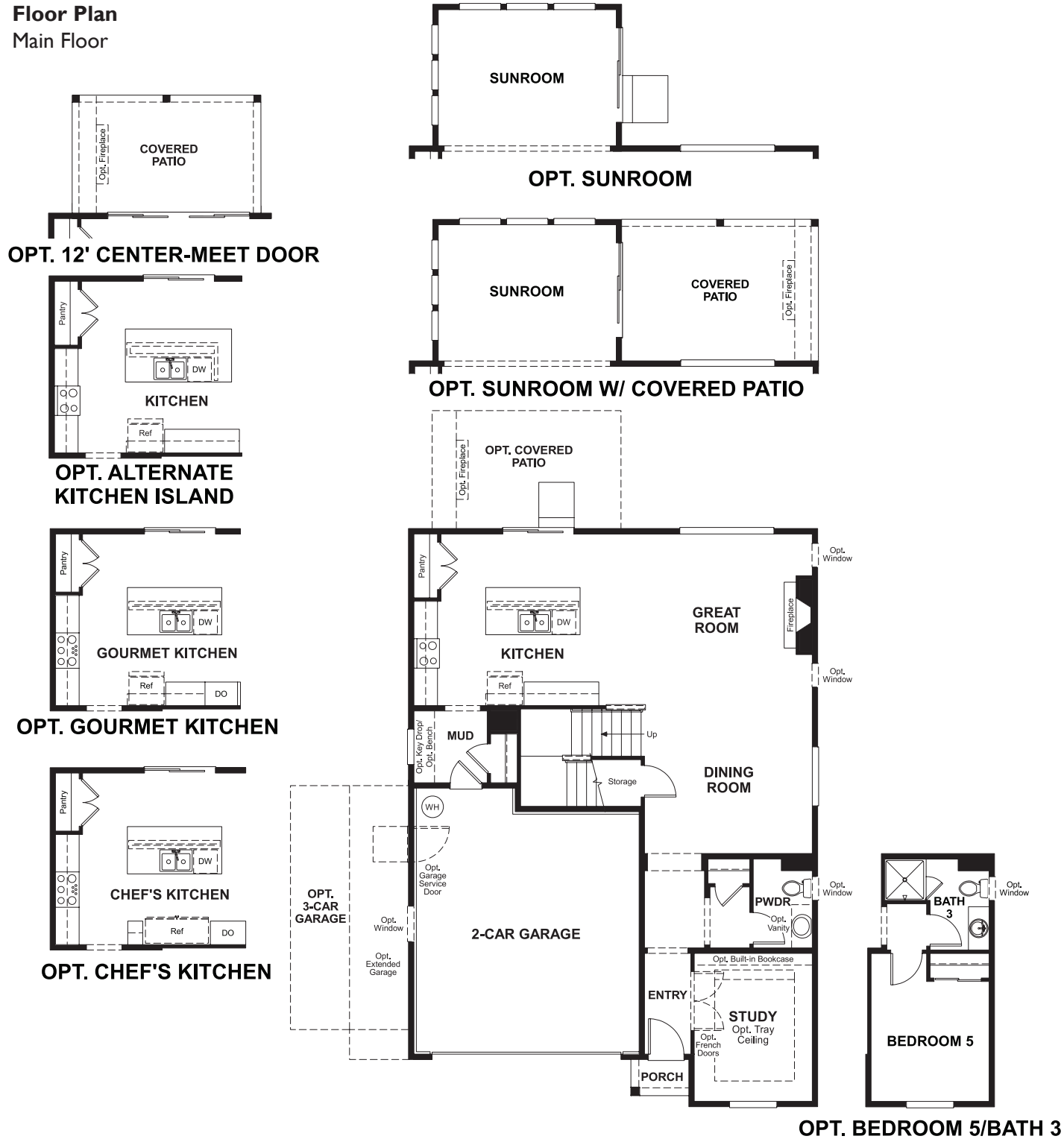


Blueberry Lane
FOSTER

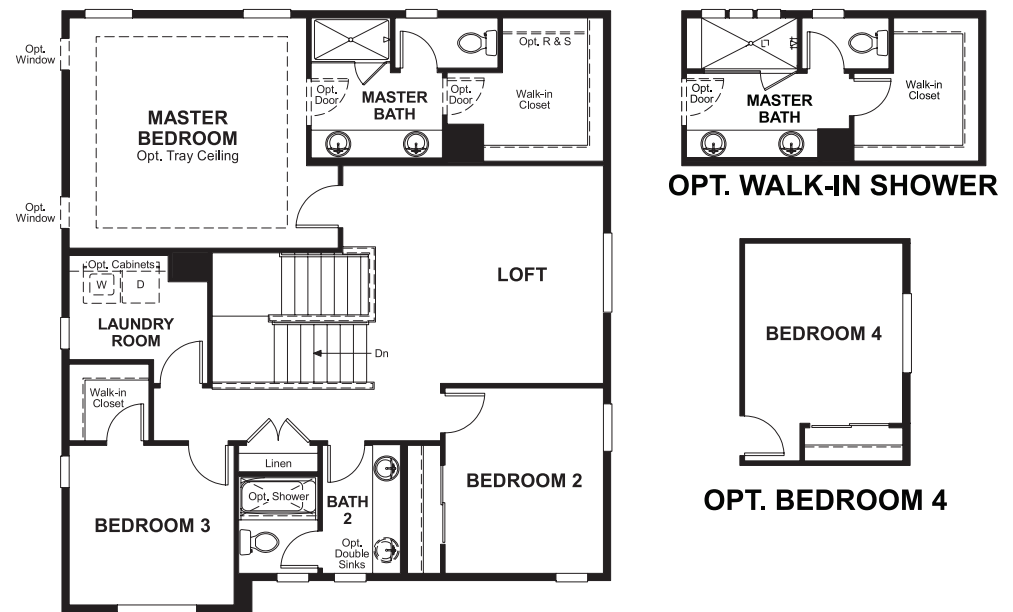
Approx. square feet: 2,350
Stories: 2
Bedrooms: 3 - 6

Garage: 2- to 3-car
Plan Number: W598

Floor Plan
Main Floor



Floor Plan
Second Floor



THIS PLAN'S PROJECTED HERS® INDEX = 54*
Projected Rating Based on Plans – Field Confirmation Required

How does this floor plan rate?
Take a look: **100** = Standard new home* **130** = Typical resale home**
The lower the number, the better! Refer to the RESNET® HERS index brochure or go to www.RESNET.us for details.

What's a HERS® Index? HERS stands for Home Energy Rating System, a system created by RESNET® to measure home energy efficiency.[^]
A Projected HERS index or rating is a computer simulation performed prior to construction by a third-party HERS rater using RESNET-accredited rating software, rated feature and specification data derived from home plans, features and specifications, and other data selected or assumed by the rater. The projected HERS index is approximate and is subject to change without notice. Actual results will vary.

*This information is presented for education purposes only. The HERS index for a confirmed rating will be determined by a third-party HERS rater based on data gathered from on-site observations and, if required, testing of rated features for a home as featured, optioned, located, oriented and/or built.
+Standard new home is based on the RESNET® Reference Home definition with a HERS® index of 100 (based on the 2006 International Energy Conservation Code).
++Typical resale home is based on the U.S. Department of Energy definition with a HERS® index of 130.

[^]RESNET® has developed the HERS® index to indicate the comparative efficiencies of homes. It is no guarantee that energy efficiencies will be achieved.