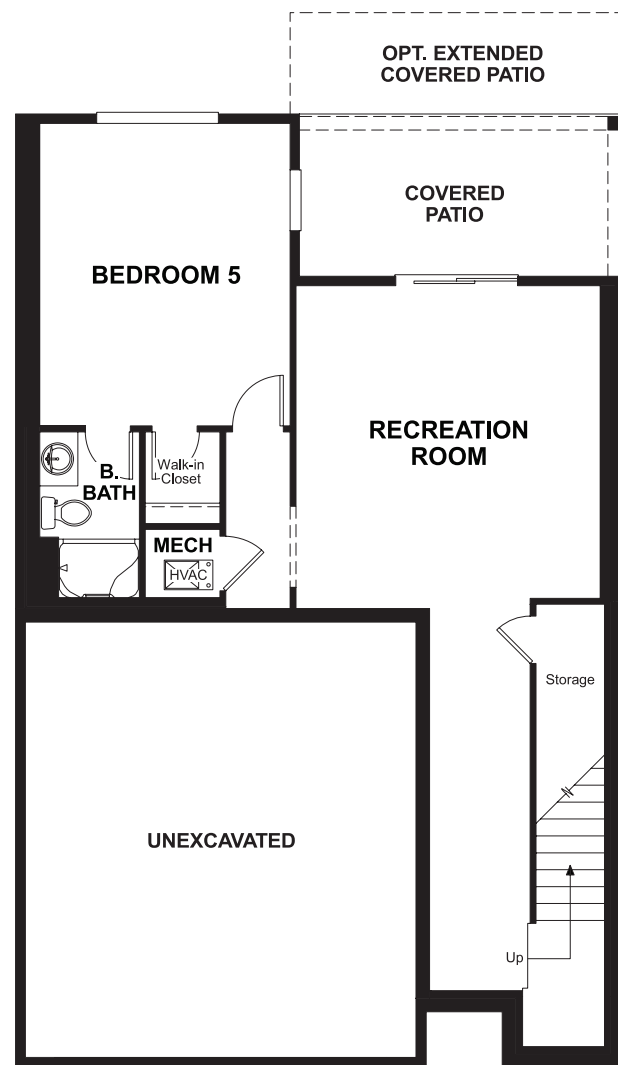


THE LIESEL

Approx. 2,050 sq. ft. | 2 stories | 3-5 bedrooms | 2-car garage | Plan #W712

BASEMENT



OPT. WALKOUT BASEMENT



ELEVATION D

ABOUT THE LIESEL

The Liesel plan greets guests with dramatic two-story entry. The main floor boasts a spacious great room with a fireplace and a gourmet kitchen with abundant counterspace, a double oven, a center island and an adjacent dining room. There's even a covered patio with an optional fireplace! Upstairs, enjoy a versatile loft and three generous bedrooms, including an elegant master suite with an expansive walk-in closet. Personalize this plan with a chef's kitchen, deluxe master bath and finished basement with fifth bedroom, full bath and rec room!



ELEVATION B



ELEVATION C

*This information is presented for education purposes only. The HERS index for a confirmed rating will be determined by a third-party HERS rater based on data gathered from on-site observations and, if required, testing of rated features for a home as featured, optioned, located, oriented and/or built.

+Standard new home is based on the RESNET® Reference Home definition with a HERS® index of 100 (based on the 2006 International Energy Conservation Code).

++Typical resale home is based on the U.S. Department of Energy definition with a HERS® index of 130.

^RESNET® has developed the HERS® index to indicate the comparative efficiencies of homes. It is no guarantee that energy efficiencies will be achieved.



Floor plans and renderings are conceptual drawings and may vary from actual plans and homes as built. Options and features may not be available on all homes and are subject to change without notice. Actual homes may vary from photos and/or drawings which show upgraded landscaping and may not represent the lowest-priced homes in the community. Features may include optional upgrades and may not be available on all homes. Square footage numbers are approximate and are subject to change without notice. Prices, specifications and availability subject to change without notice. ©2017 Richmond American Homes, Richmond American Homes of Washington, Inc. 12/08/2017

