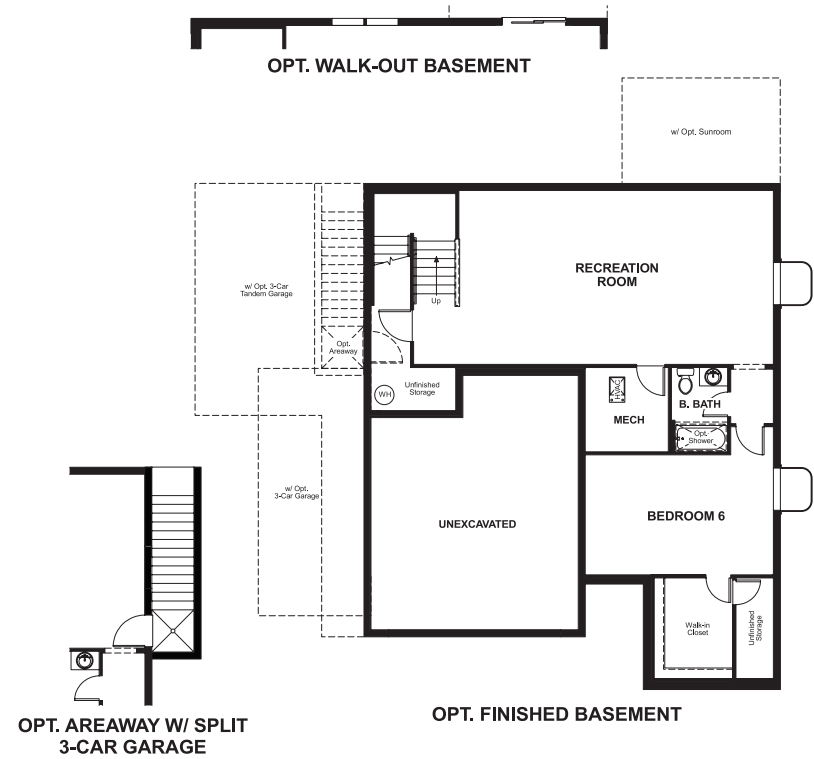


# HOPEWELL

**Approx. square feet:** 2,650  
**Stories:** 2  
**Bedrooms:** 3 - 6

**Garage:** 2- to 3-car  
**Plan Number:** M724

**Floor Plan**  
Basement



**Elevation H**

**Approx. square feet:** 2,650  
**Stories:** 2  
**Bedrooms:** 3 - 6  
**Garage:** 2- to 3-car  
**Plan Number:** M724

Love to entertain? The Hopewell's wide open great room and dining area are ideal for gathering with friends and family. The adjacent kitchen allows you to interact with guests without interrupting meal prep. Opt for a sunroom or covered patio for even more space to mingle. Upstairs, enjoy a loft, two guest rooms and a large master bedroom with a private bath and immense walk-in closet. Personalize with a tech center, bonus bedrooms, a deluxe master bath and more.

**Available elevations:**



**Elevation A**



**Elevation B**



**Elevation C**



**Elevation D**



**Elevation E**



**Elevation F**



**Elevation G**



**Elevation H**



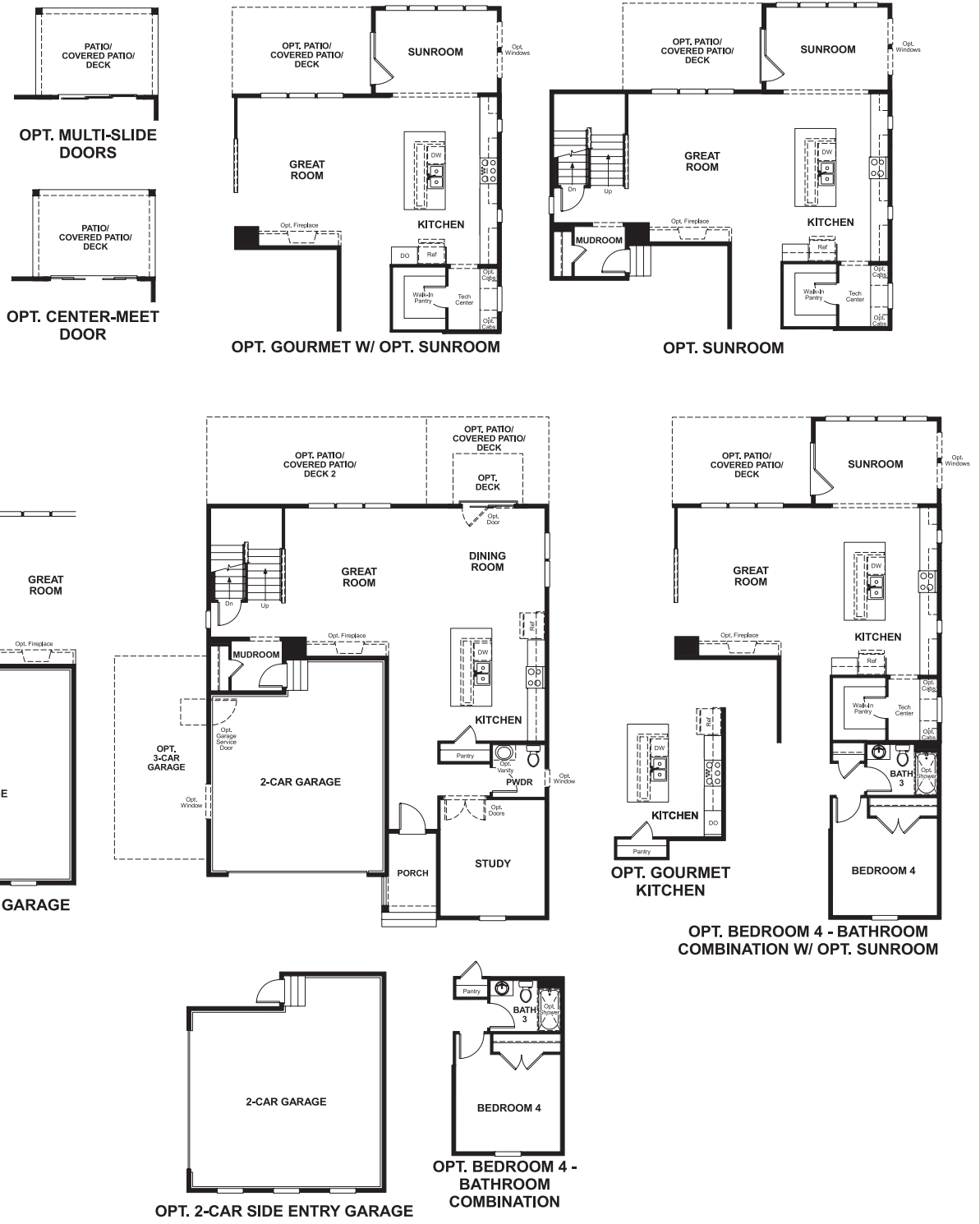
**Elevation J**



# HOPEWELL

**Approx. square feet: 2,650**  
**Stories: 2**  
**Garage: 2- to 3-car**  
**Plan Number: M724**  
**Bedrooms: 3 - 6**

## Floor Plan Main Floor



## Floor Plan Second Floor

