

Auburn at Stonegate  
**SENECA**



**Elevation A**

**Approx. square feet:** 3,850  
**Stories:** 2  
**Bedrooms:** 5  
**Garage:** 2-car

The Seneca plan comes decked out with incredible included features, such as a live-in suite with its own separate entrance—also available as a study—a master bath with a private balcony or optional spa, and a butler’s pantry that can be optioned as a pet spa, wine room or more. You’ll also appreciate a large great room flowing into a spacious kitchen, as well as a versatile loft upstairs. Designed with your ultimate comfort and convenience in mind, the Seneca is the dream home you’ve been waiting for.

**Available elevations:**



**Elevation A**



**Elevation B**



**Elevation C**

 **Villages of Irvine**<sup>®</sup>  
Masterfully Planned by the Irvine Company

“Masterfully Planned by the Irvine Company” means that the Irvine Company created the master land plan for all Irvine Company communities. The “master land plan” includes the overall entitlement and design of each community but does not include the design, construction and sale of homes. The design, construction and sale of homes is the sole responsibility of the community builders. The Irvine company is not designing, constructing or offering homes for sale in any community.

**COMMUNITY LOCATION**  
53 Fenway  
Irvine, CA 92595  
800-852-9714

**HOME GALLERY**  
5171 California Avenue  
Irvine, CA 92617  
800-852-9714



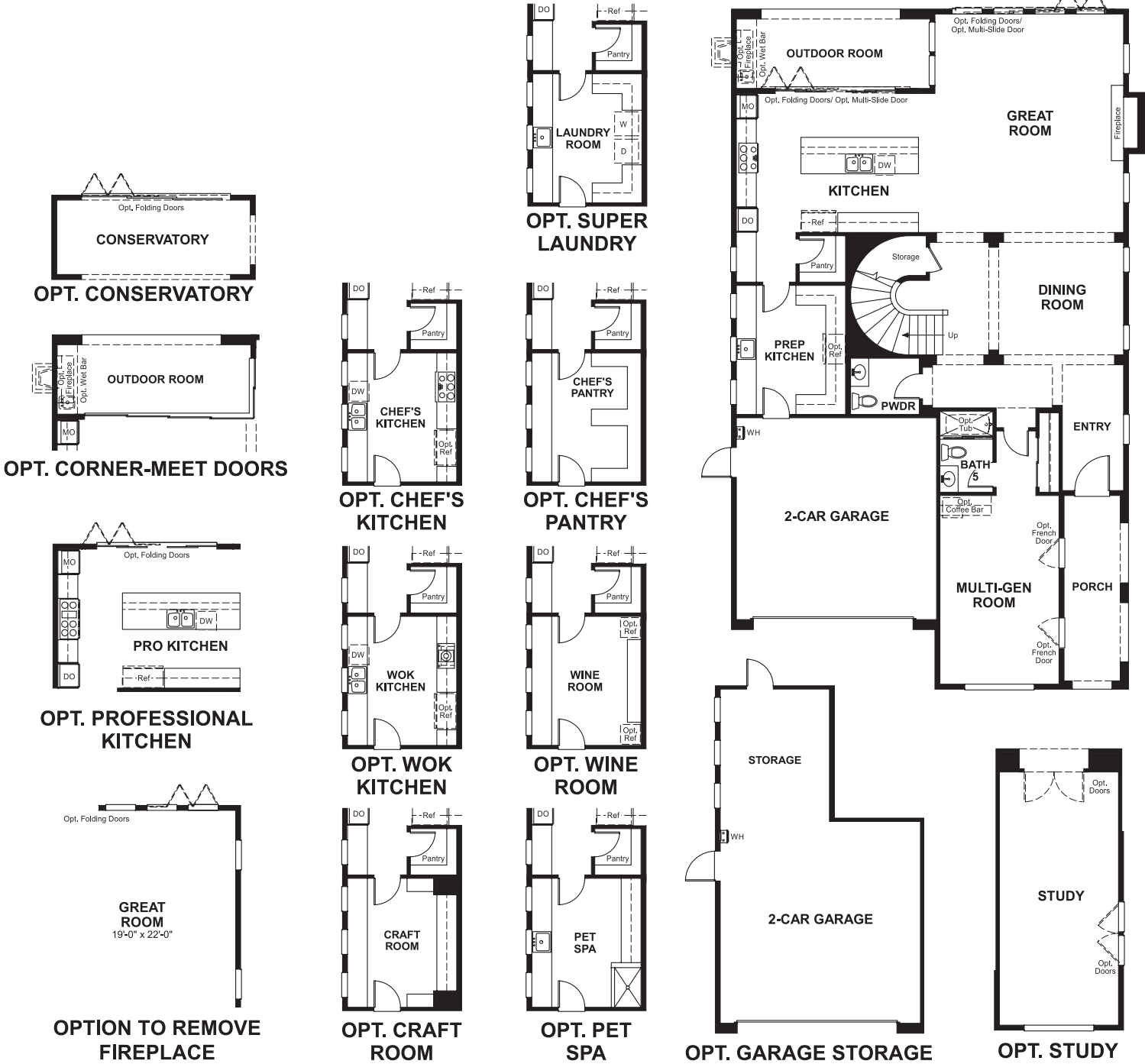
**COMMUNITY LOCATION**  
53 Fenway  
Irvine, CA 92595  
800-852-9714

**HOME GALLERY**  
5171 California Avenue  
Irvine, CA 92617  
800-852-9714

Auburn at Stonegate  
**SENECA**

**Approx. square feet: 3,850** **Bedrooms: 5**  
**Stories: 2** **Garage: 2-car**

**Floor plan**  
Main Floor



**Floor plan**  
Second Floor



**THIS PLAN'S PROJECTED HERS® INDEX = 67\***  
Projected Rating Based on Plans – Field Confirmation Required

**How does this floor plan rate?**  
Take a look: **100** = Standard new home\* **130** = Typical resale home\*\*  
The lower the number, the better! Refer to the RESNET® HERS index brochure or go to [www.RESNET.us](http://www.RESNET.us) for details.

**What's a HERS® Index?** HERS stands for Home Energy Rating System, a system created by RESNET® to measure home energy efficiency.<sup>^</sup>  
A Projected HERS index or rating is a computer simulation performed prior to construction by a third-party HERS rater using RESNET-accredited rating software, rated feature and specification data derived from home plans, features and specifications, and other data selected or assumed by the rater. The projected HERS index is approximate and is subject to change without notice. Actual results will vary.

\*This information is presented for education purposes only. The HERS index for a confirmed rating will be determined by a third-party HERS rater based on data gathered from on-site observations and, if required, testing of rated features for a home as featured, optioned, located, oriented and/or built.  
+Standard new home is based on the RESNET® Reference Home definition with a HERS® index of 100 (based on the 2006 International Energy Conservation Code).  
\*\*Typical resale home is based on the U.S. Department of Energy definition with a HERS® index of 130.

<sup>^</sup>RESNET® has developed the HERS® index to indicate the comparative efficiencies of homes. It is no guarantee that energy efficiencies will be achieved.