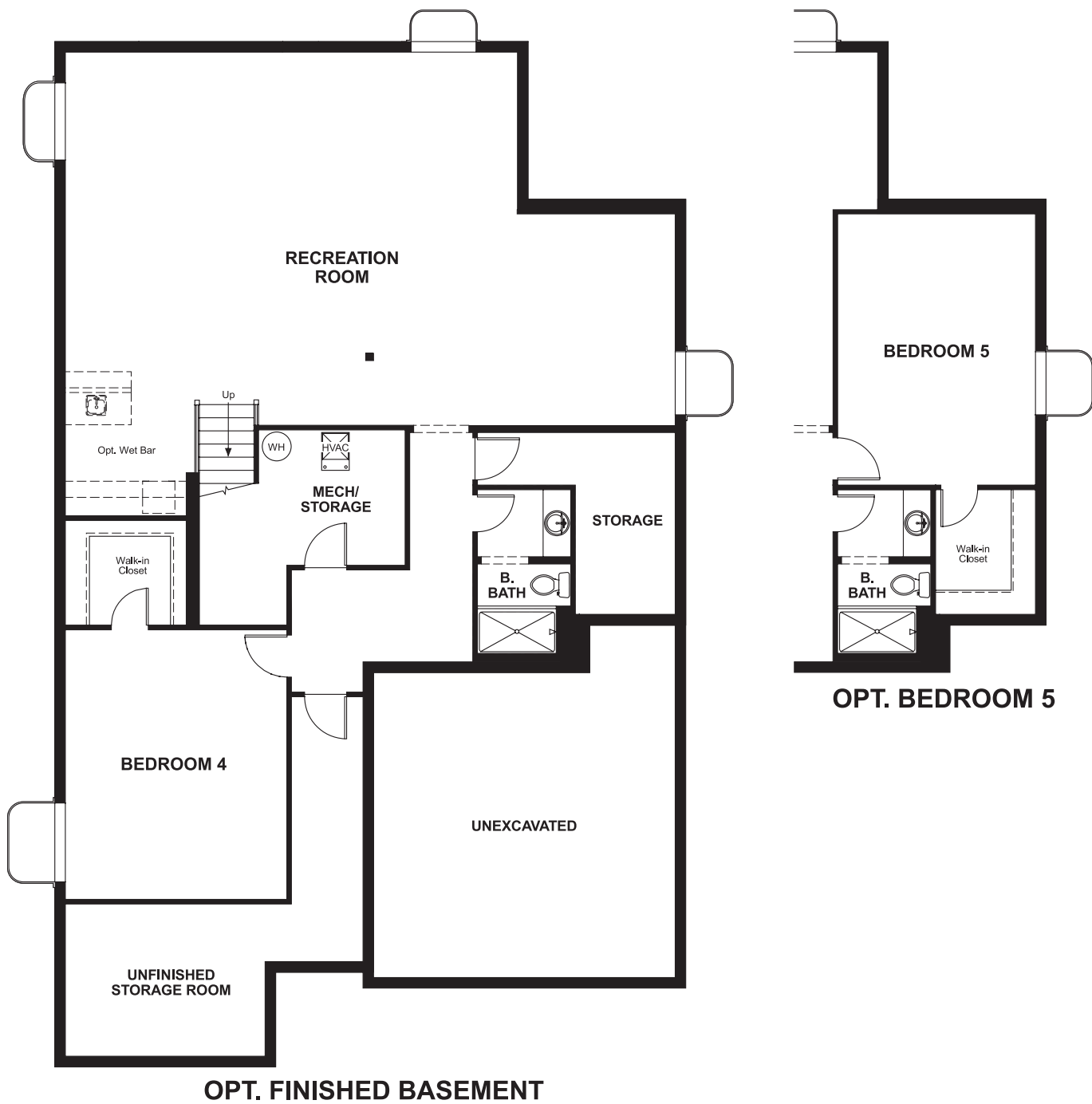


# THE CIMARRON

Approx. 1,900 sq. ft. | 1 story | 2-5 bedrooms | 2-car garage | Plan #D195

## BASEMENT



ELEVATION D

### ABOUT THE CIMARRON

The ranch-style Cimarron plan greets guests with a covered front porch. The home also offers a deluxe master bath, a formal dining room, which can be optioned as a private study or third bedroom, a spacious great room with a fireplace and a kitchen with gourmet features. An additional option includes a finished basement.

### COMMUNITY LOCATION:

Providence Village at Sterling Ranch | 9873 Eagle River Street | Littleton, CO 80125 | **303.850.5750**



ELEVATION A



ELEVATION B

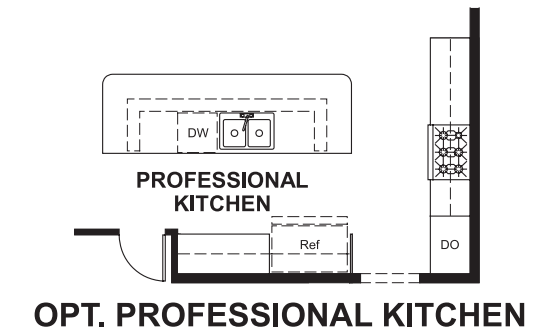
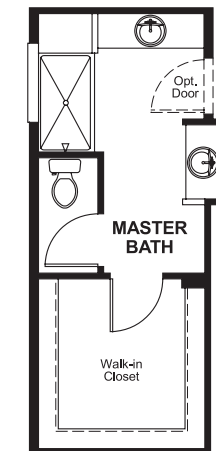
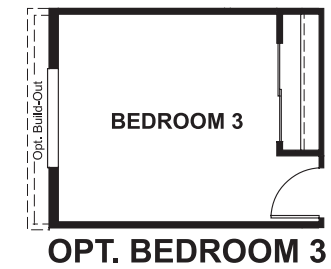
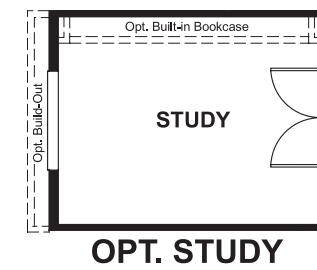
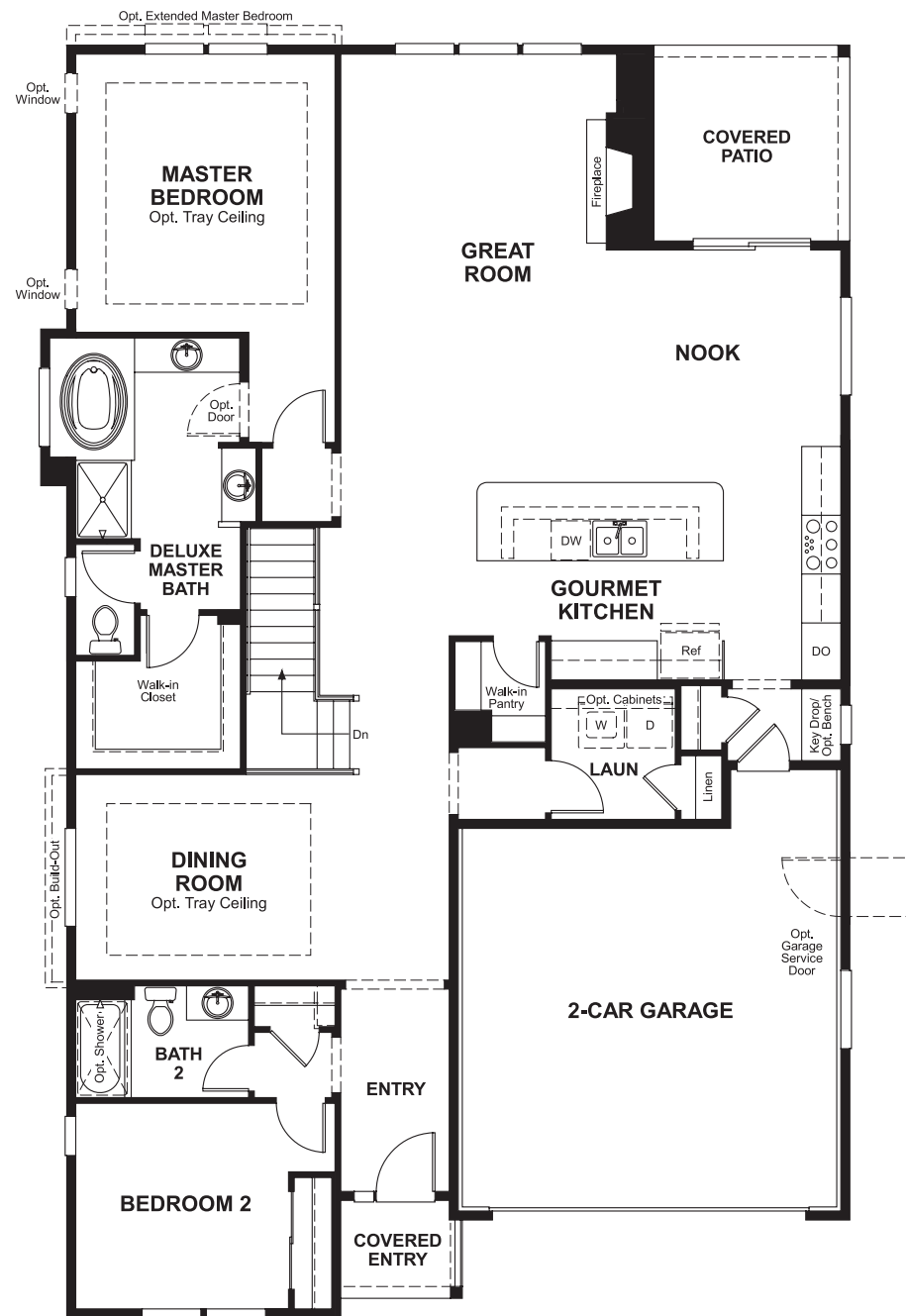


ELEVATION C

Floor plans and renderings are conceptual drawings and may vary from actual plans and homes as built. Options and features may not be available on all homes and are subject to change without notice. Actual homes may vary from photos and/or drawings which show upgraded landscaping and may not represent the lowest-priced homes in the community. Features may include optional upgrades and may not be available on all homes. Square footage numbers are approximate and are subject to change without notice. Prices, specifications and availability subject to change without notice. ©2018 Richmond American Homes, Richmond American Homes of Colorado, Inc. 4/18/2018

MAIN FLOOR

MAIN FLOOR OPTIONS



Floor plans and renderings are conceptual drawings and may vary from actual plans and homes as built. Options and features may not be available on all homes and are subject to change without notice. Actual homes may vary from photos and/or drawings which show upgraded landscaping and may not represent the lowest-priced homes in the community. Features may include optional upgrades and may not be available on all homes. Square footage numbers are approximate and are subject to change without notice. Prices, specifications and availability subject to change without notice. ©2018 Richmond American Homes, Richmond American Homes of Colorado, Inc. 4/18/2018

Floor plans and renderings are conceptual drawings and may vary from actual plans and homes as built. Options and features may not be available on all homes and are subject to change without notice. Actual homes may vary from photos and/or drawings which show upgraded landscaping and may not represent the lowest-priced homes in the community. Features may include optional upgrades and may not be available on all homes. Square footage numbers are approximate and are subject to change without notice. Prices, specifications and availability subject to change without notice. ©2018 Richmond American Homes, Richmond American Homes of Colorado, Inc. 4/18/2018