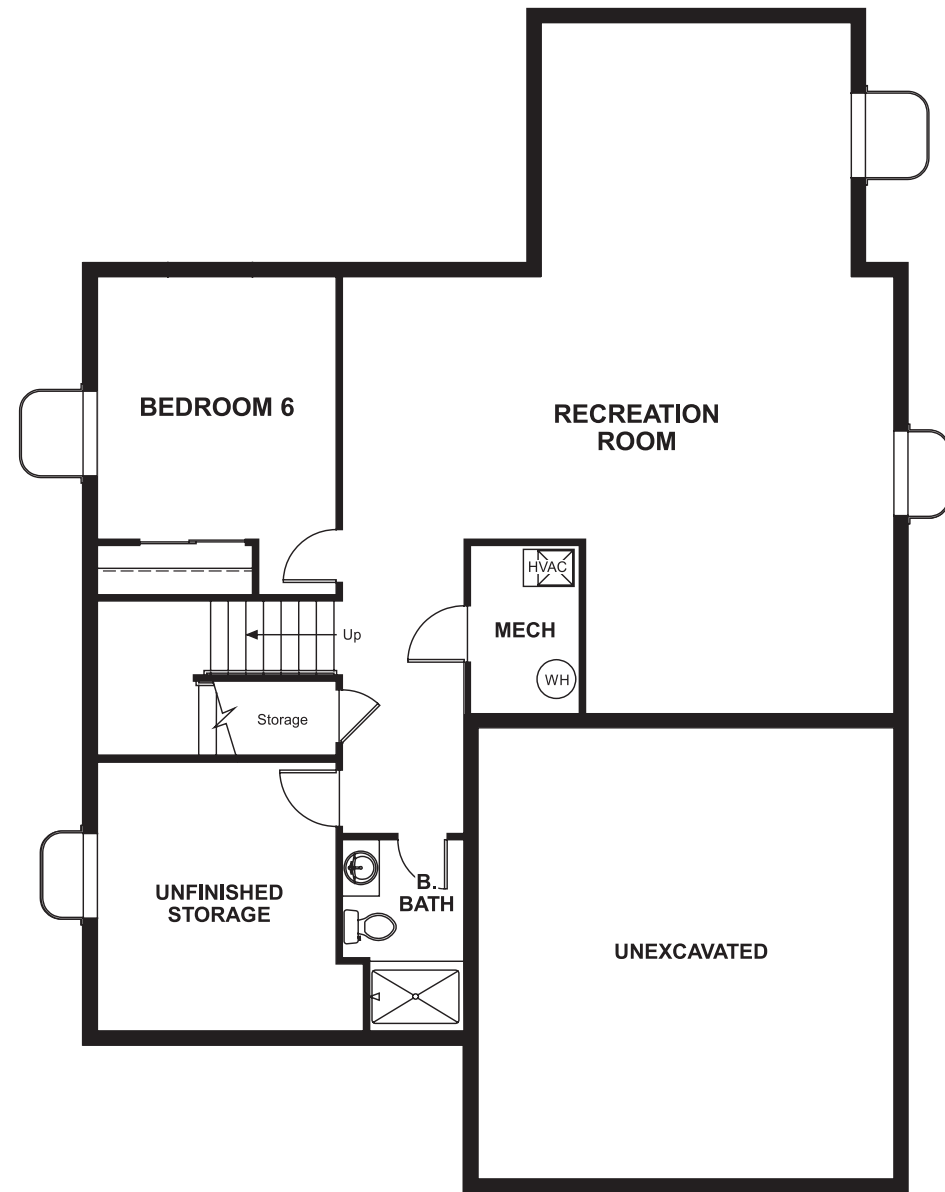


# THE GUNNISON

Approx. 2,700 sq. ft. | 2 stories | 4-6 bedrooms | 2-car garage | Plan #D250

## BASEMENT



**OPT. FINISHED BASEMENT**



ELEVATION D

## ABOUT THE GUNNISON

The Gunnison features an entryway with adjacent flex space that can be personalized to suit your needs. At the back of the home, you'll find a great room with a corner fireplace, a large kitchen with center island and a sunroom. An upstairs laundry room, loft and deluxe master bath complete this home.



ELEVATION A



ELEVATION B



ELEVATION C

## COMMUNITY LOCATION:

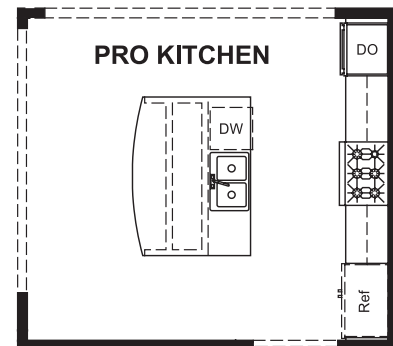
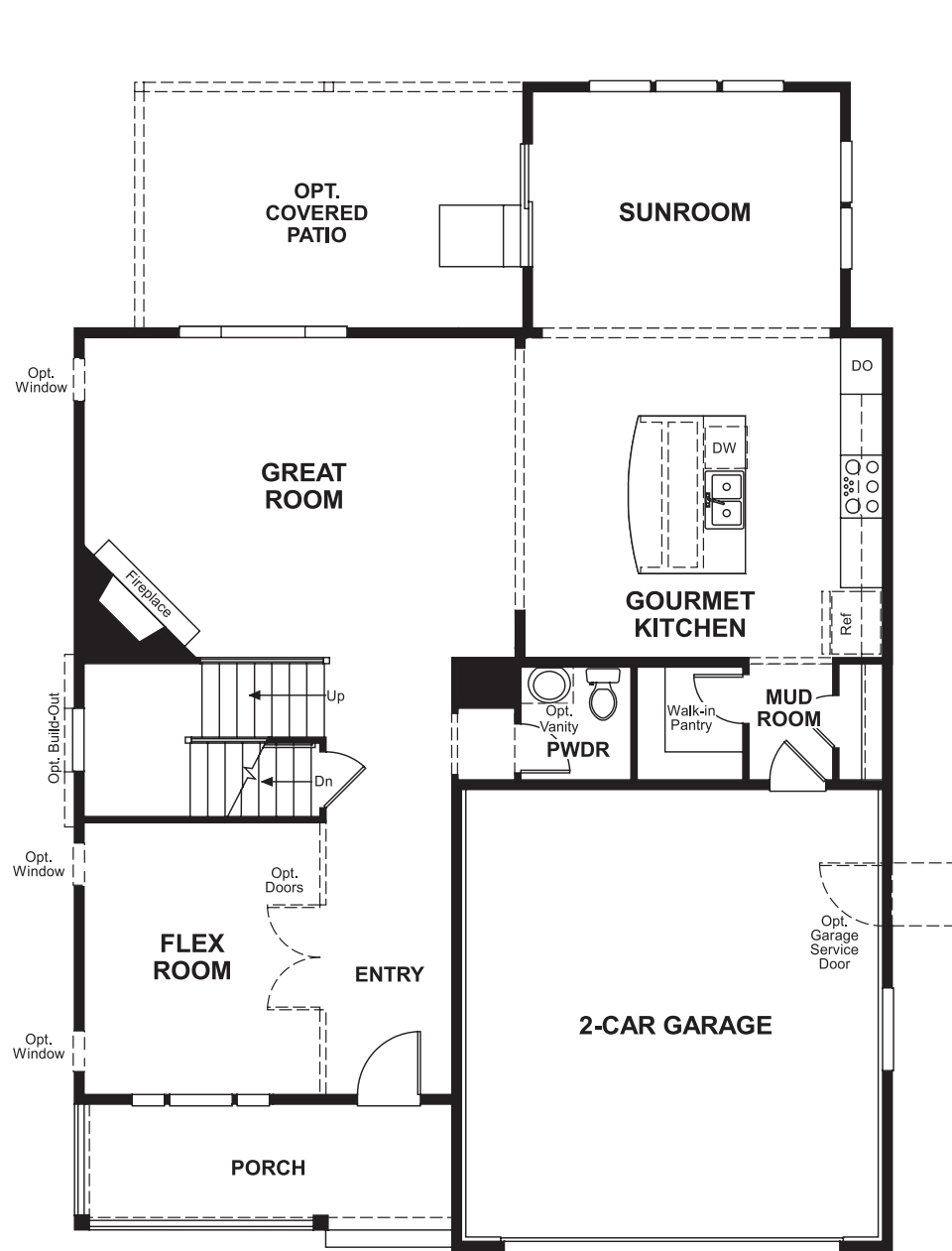
Providence Village at Sterling Ranch | 9873 Eagle River Street | Littleton, CO 80125 | **303.850.5750**



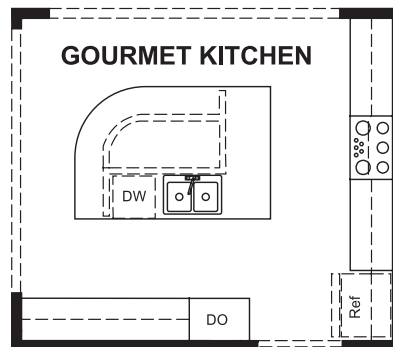
Floor plans and renderings are conceptual drawings and may vary from actual plans and homes as built. Options and features may not be available on all homes and are subject to change without notice. Actual homes may vary from photos and/or drawings which show upgraded landscaping and may not represent the lowest-priced homes in the community. Features may include optional upgrades and may not be available on all homes. Square footage numbers are approximate and are subject to change without notice. Prices, specifications and availability subject to change without notice. ©2018 Richmond American Homes, Richmond American Homes of Colorado, Inc. 4/18/2018

MAIN FLOOR

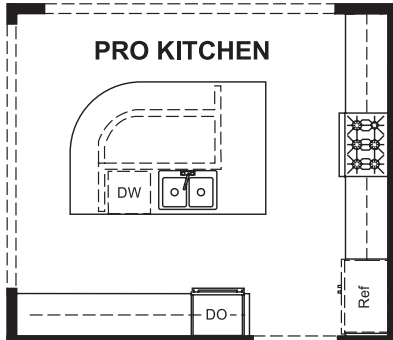
SECOND FLOOR



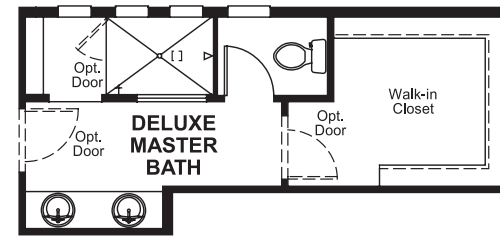
OPT. PROFESSIONAL KITCHEN



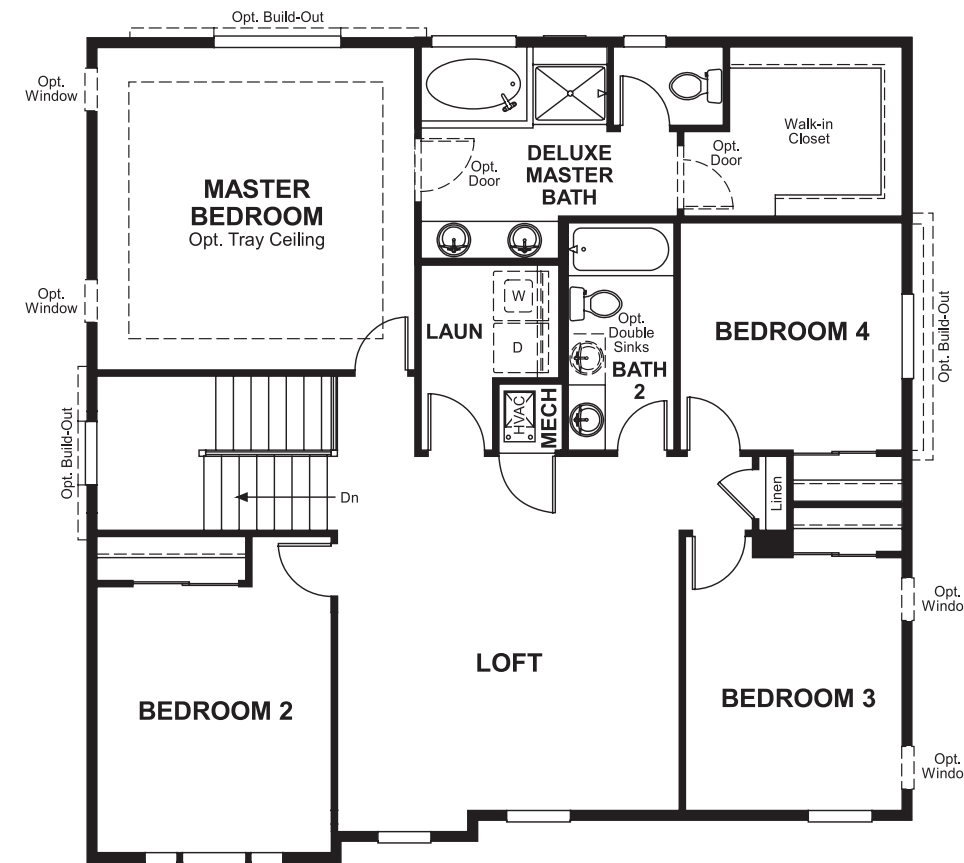
OPT. GOURMET KITCHEN 2



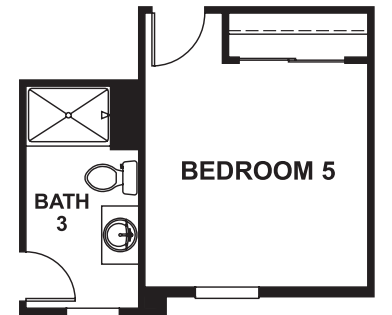
OPT. PROFESSIONAL KITCHEN 2



OPT. DELUXE MASTER BATH 2



OPT. BATH 3



OPT. BEDROOM 5 - BATHROOM COMBINATION

Floor plans and renderings are conceptual drawings and may vary from actual plans and homes as built. Options and features may not be available on all homes and are subject to change without notice. Actual homes may vary from photos and/or drawings which show upgraded landscaping and may not represent the lowest-priced homes in the community. Features may include optional upgrades and may not be available on all homes. Square footage numbers are approximate and are subject to change without notice. Prices, specifications and availability subject to change without notice. ©2018 Richmond American Homes, Richmond American Homes of Colorado, Inc. 4/18/2018

Floor plans and renderings are conceptual drawings and may vary from actual plans and homes as built. Options and features may not be available on all homes and are subject to change without notice. Actual homes may vary from photos and/or drawings which show upgraded landscaping and may not represent the lowest-priced homes in the community. Features may include optional upgrades and may not be available on all homes. Square footage numbers are approximate and are subject to change without notice. Prices, specifications and availability subject to change without notice. ©2018 Richmond American Homes, Richmond American Homes of Colorado, Inc. 4/18/2018