

Edgefield
JEFFERSON



Elevation A

Approx. square feet: 2,600
Stories: 2
Bedrooms: 4 - 5
Garage: 2-car
Plan Number: L260

The Jefferson plan was designed for entertaining, with a formal dining room, an open great room and a gourmet kitchen with a spacious center island. Upstairs, you'll find a convenient laundry, a versatile loft and a luxurious master suite with an expansive walk-in closet and private bath. Personalize this plan with a covered patio and an extra bedroom in lieu of the dining room.

Available elevations:



Elevation A



Elevation B



Elevation C

COMMUNITY LOCATION
 Decatur Boulevard and Frias Avenue
 Las Vegas, NV 89141
 702-638-4440

HOME GALLERY
 7770 South Dean Martin Drive, Suite 308
 Las Vegas, NV 89139
 702-617-8400



COMMUNITY LOCATION
 Decatur Boulevard and Frias Avenue
 Las Vegas, NV 89141
 702-638-4440

HOME GALLERY
 7770 South Dean Martin Drive, Suite 308
 Las Vegas, NV 89139
 702-617-8400

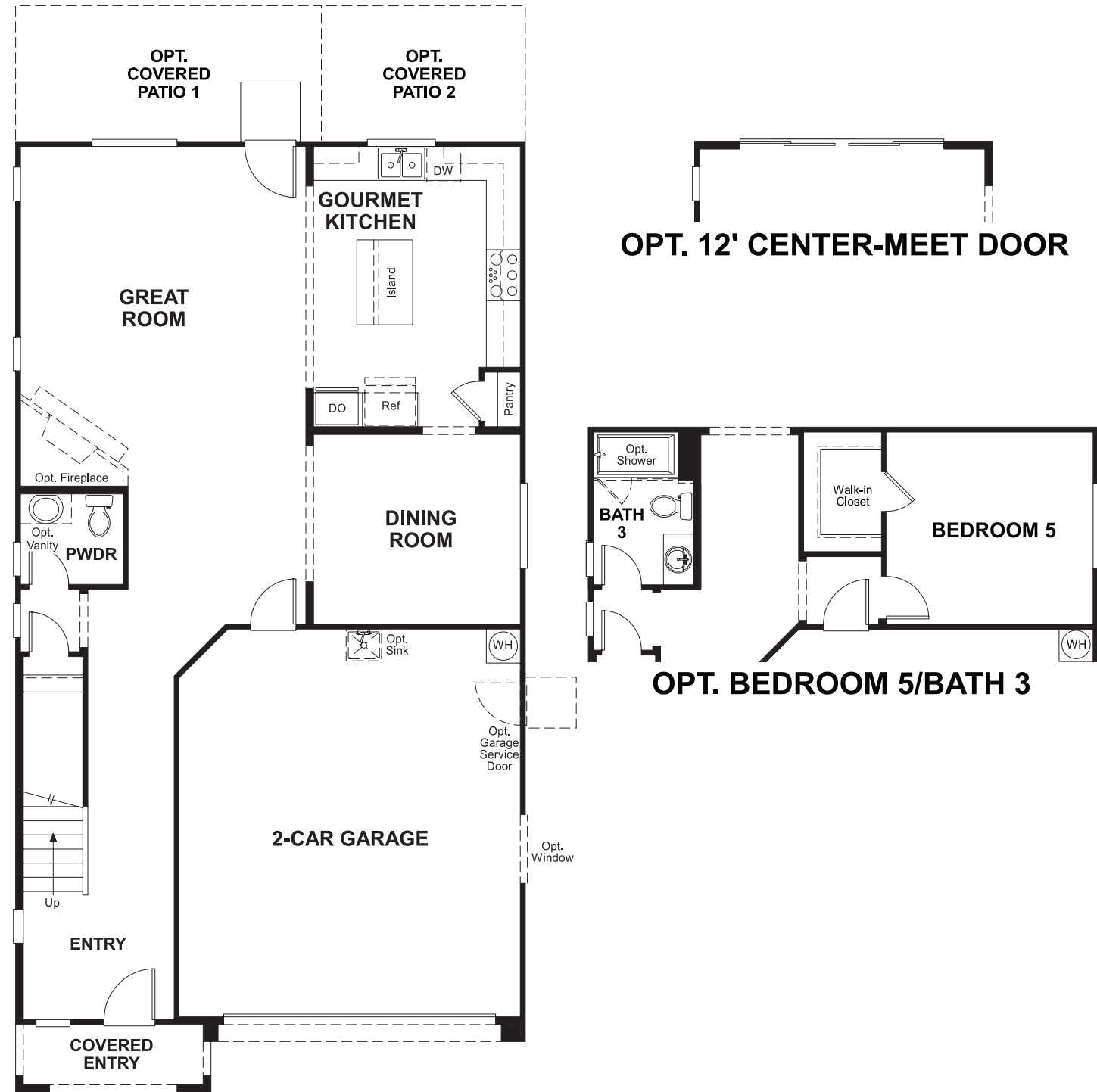


Edgefield
JEFFERSON

Approx. square feet: 2,600
Stories: 2
Bedrooms: 4 - 5

Garage: 2-car
Plan Number: L260

Floor Plan
Main Floor



Floor Plan
Second Floor



**THIS PLAN'S PROJECTED
HERS® INDEX = 64***
Projected Rating Based on Plans – Field Confirmation Required

How does this floor plan rate?
Take a look: **100** = Standard new home* **130** = Typical resale home**
The lower the number, the better! Refer to the RESNET® HERS index brochure or go to www.RESNET.us for details.

What's a HERS® Index? HERS stands for Home Energy Rating System, a system created by RESNET® to measure home energy efficiency.[^]
A Projected HERS index or rating is a computer simulation performed prior to construction by a third-party HERS rater using RESNET-accredited rating software, rated feature and specification data derived from home plans, features and specifications, and other data selected or assumed by the rater. The projected HERS index is approximate and is subject to change without notice. Actual results will vary.

*This information is presented for education purposes only. The HERS index for a confirmed rating will be determined by a third-party HERS rater based on data gathered from on-site observations and, if required, testing of rated features for a home as featured, optioned, located, oriented and/or built.
+Standard new home is based on the RESNET® Reference Home definition with a HERS® index of 100 (based on the 2006 International Energy Conservation Code).
++Typical resale home is based on the U.S. Department of Energy definition with a HERS® index of 130.

[^]RESNET® has developed the HERS® index to indicate the comparative efficiencies of homes. It is no guarantee that energy efficiencies will be achieved.