

Santa Cruz Meadows
DANIEL



Elevation A

Available elevations:



Elevation A



Elevation B shown with optional stone



Elevation C shown with optional stone

Approx. square feet: 2,150

Stories: 1

Bedrooms: 3 - 4

Garage: 2- to 3-car

Plan Number: T21D

A charming covered front porch welcomes you to this beautiful new ranch-style floor plan. The open kitchen includes maple cabinets, granite countertops, a convenient center island and a walk-in pantry, and the spacious great room is perfect for entertaining. Choose from a private study or optional fourth bedroom, and relax in the lavish master suite with optional deluxe bath. Other personalization options include a gourmet kitchen and a side-entry garage.



COMMUNITY LOCATION

1149 West Peaceful Meadow Path, Lot 237
Sahuarita, AZ 85629
520-498-4150

HOME GALLERY

3091 West Ina Road
Tucson, AZ 85741
520-498-4155



COMMUNITY LOCATION

1149 West Peaceful Meadow Path, Lot 237
Sahuarita, AZ 85629
520-498-4150

HOME GALLERY

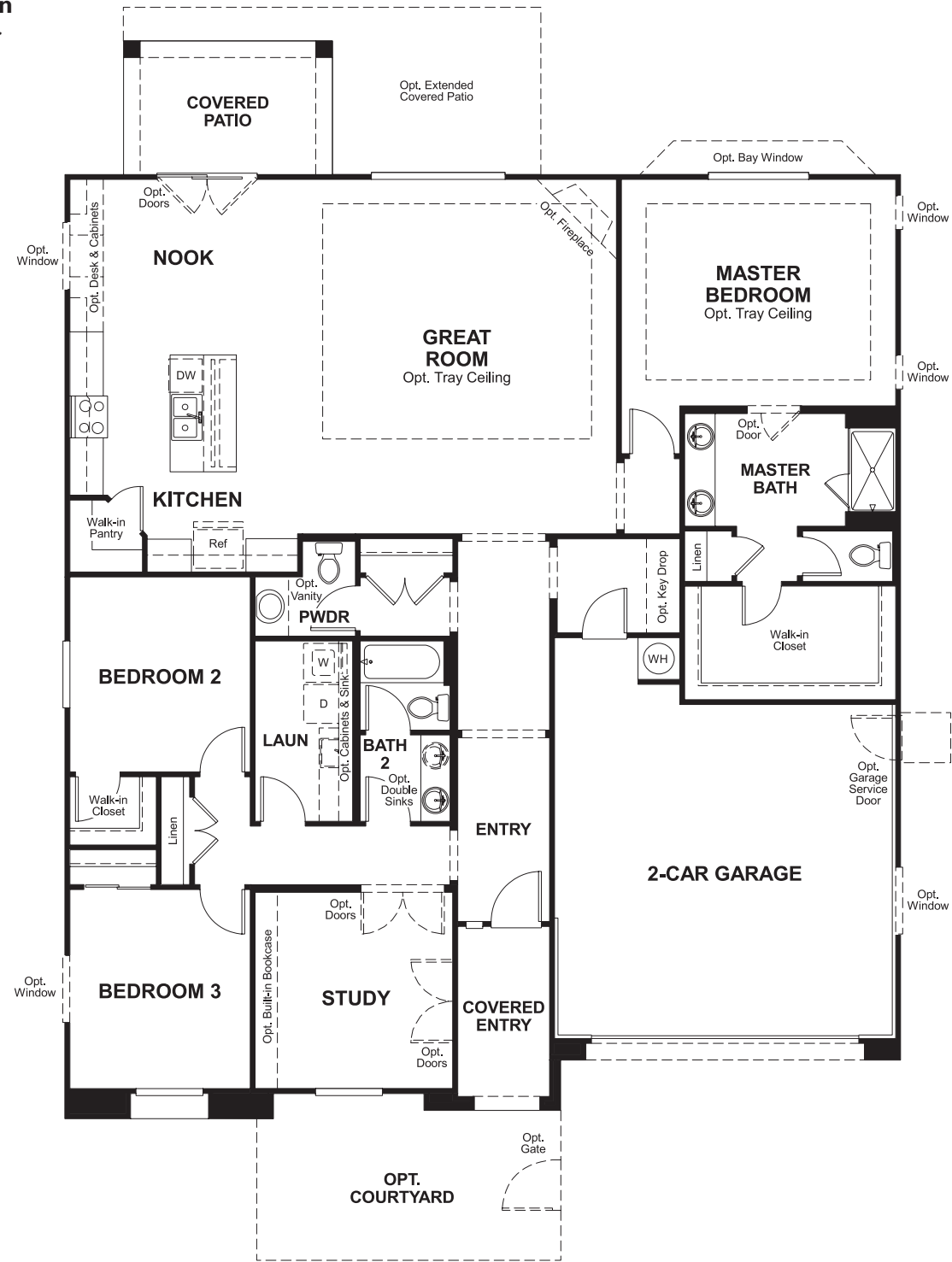
3091 West Ina Road
Tucson, AZ 85741
520-498-4155

Santa Cruz Meadows
DANIEL

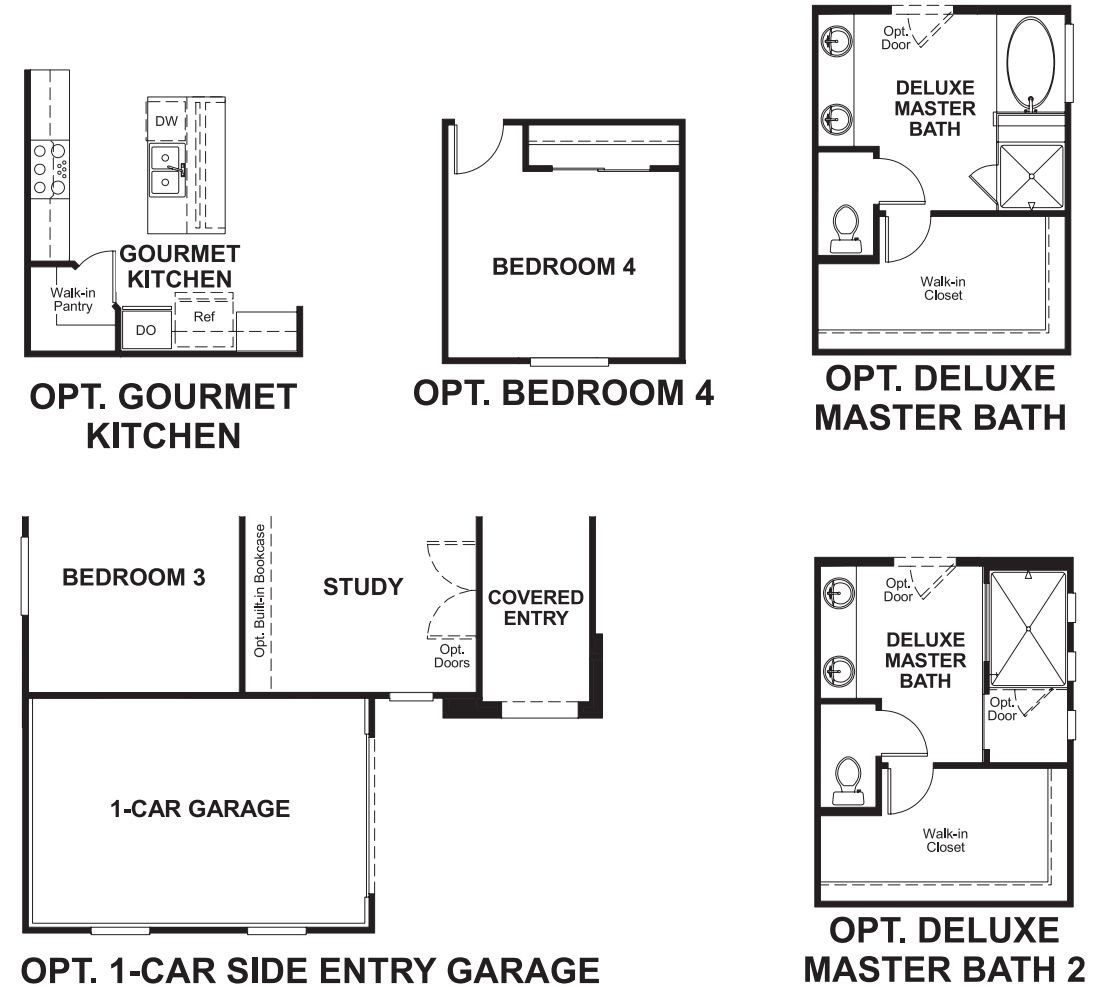
Approx. square feet: 2,150
Stories: 1
Bedrooms: 3 - 4

Garage: 2- to 3-car
Plan Number: T21D

Floor Plan
Main Floor



Floor Plan
Main Floor Options



**THIS PLAN'S PROJECTED
HERS® INDEX = 68***
Projected Rating Based on Plans – Field Confirmation Required

How does this floor plan rate?
Take a look: **100** = Standard new home* **130** = Typical resale home**
The lower the number, the better! Refer to the RESNET® HERS index brochure or go to www.RESNET.us for details.

What's a HERS® Index? HERS stands for Home Energy Rating System, a system created by RESNET® to measure home energy efficiency.[^]
A Projected HERS index or rating is a computer simulation performed prior to construction by a third-party HERS rater using RESNET-accredited rating software, rated feature and specification data derived from home plans, features and specifications, and other data selected or assumed by the rater. The projected HERS index is approximate and is subject to change without notice. Actual results will vary.

*This information is presented for education purposes only. The HERS index for a confirmed rating will be determined by a third-party HERS rater based on data gathered from on-site observations and, if required, testing of rated features for a home as featured, optioned, located, oriented and/or built.
+Standard new home is based on the RESNET® Reference Home definition with a HERS® index of 100 (based on the 2006 International Energy Conservation Code).
++Typical resale home is based on the U.S. Department of Energy definition with a HERS® index of 130.

[^]RESNET® has developed the HERS® index to indicate the comparative efficiencies of homes. It is no guarantee that energy efficiencies will be achieved.