

Mountain Vail Ranch
HOPEWELL



Elevation A

Available elevations:



Elevation A



Elevation B shown with optional stone



Elevation C shown with optional stone

Approx. square feet: 2,650
Stories: 2
Bedrooms: 3 - 5
Garage: 2- to 3-car
Plan Number: T724

Great room, dining area, kitchen w/ island, study, versatile loft, pocket office. Options- sunroom, gourmet kitchen, deluxe master bath, bed 4 w/ bath 3 ILO of study, bed 5 ILO loft, extended patio.



COMMUNITY LOCATION
9494 South Horned Lizard Circle
Tucson, AZ 85747
520-498-4155

HOME GALLERY
3091 West Ina Road
Tucson, AZ 85741
520-498-4112



COMMUNITY LOCATION
9494 South Horned Lizard Circle
Tucson, AZ 85747
520-498-4155

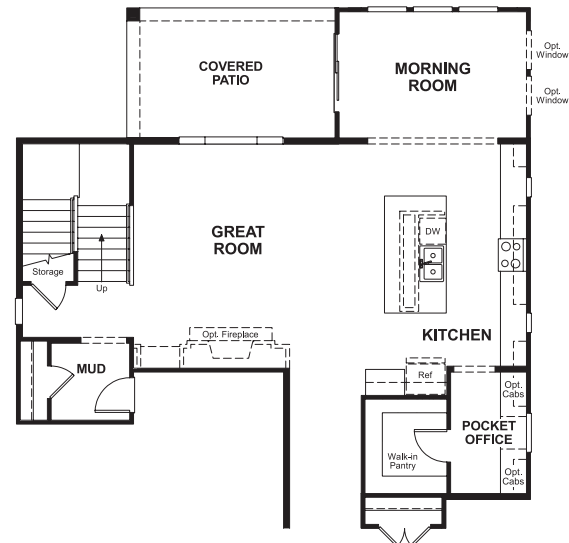
HOME GALLERY
3091 West Ina Road
Tucson, AZ 85741
520-498-4112

Mountain Vail Ranch
HOPEWELL

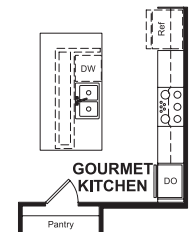
Approx. square feet: 2,650
Stories: 2
Bedrooms: 3 - 5

Garage: 2- to 3-car
Plan Number: T724

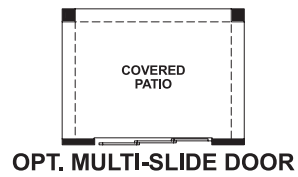
Floor Plan
Main Floor



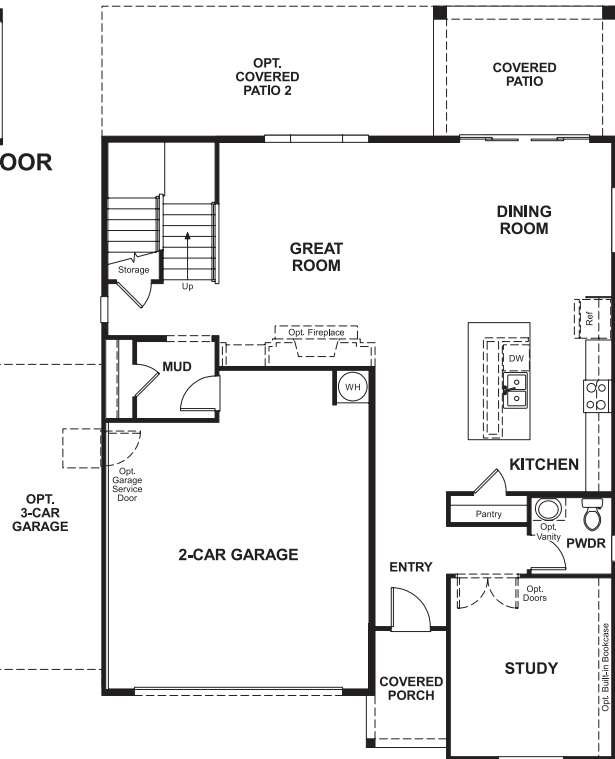
OPT. MORNING ROOM



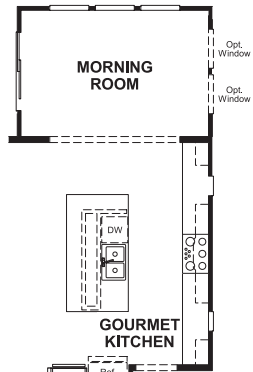
OPT. GOURMET KITCHEN



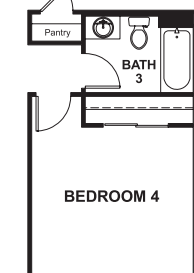
OPT. MULTI-SLIDE DOOR



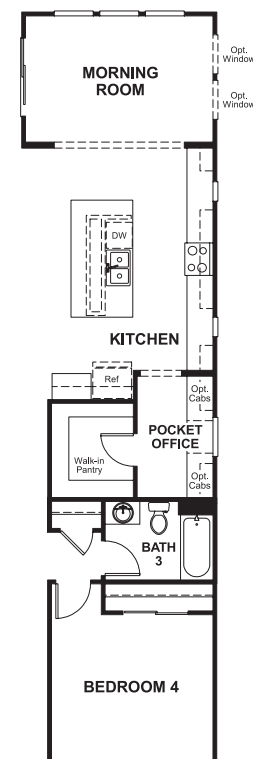
OPT. 3-CAR GARAGE



OPT. GOURMET KITCHEN W/ MORNING ROOM



OPT. BEDROOM 4/ BATH 3

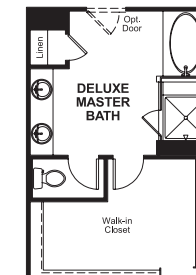
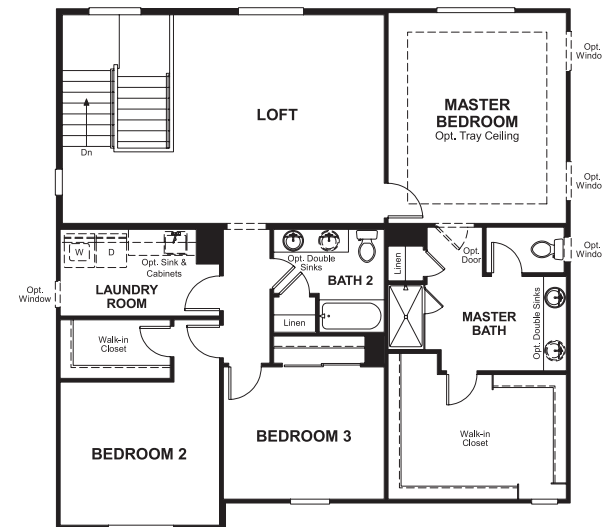


OPT. BEDROOM 4/BATH 3 W/ MORNING ROOM

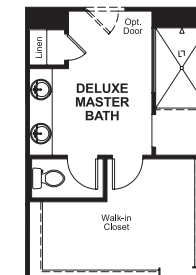
Floor Plan
Second Floor



OPT. BEDROOM 5/BATH 4



OPT. DELUXE MASTER BATH 1



OPT. DELUXE MASTER BATH 2

THIS PLAN'S PROJECTED HERS® INDEX = 64*
Projected Rating Based on Plans – Field Confirmation Required

How does this floor plan rate?

Take a look: **100** = Standard new home+ **130** = Typical resale home++
The lower the number, the better! Refer to the RESNET® HERS index brochure or go to www.RESNET.us for details.

What's a HERS® Index? HERS stands for Home Energy Rating System, a system created by RESNET® to measure home energy efficiency.†

A Projected HERS index or rating is a computer simulation performed prior to construction by a third-party HERS rater using RESNET-accredited rating software, rated feature and specification data derived from home plans, features and specifications, and other data selected or assumed by the rater. The projected HERS index is approximate and is subject to change without notice. Actual results will vary.

*This information is presented for education purposes only. The HERS index for a confirmed rating will be determined by a third-party HERS rater based on data gathered from on-site observations and, if required, testing of rated features for a home as featured, optioned, located, oriented and/or built.

+Standard new home is based on the RESNET® Reference Home definition with a HERS® index of 100 (based on the 2006 International Energy Conservation Code).

++Typical resale home is based on the U.S. Department of Energy definition with a HERS® index of 130.

†RESNET® has developed the HERS® index to indicate the comparative efficiencies of homes. It is no guarantee that energy efficiencies will be achieved.