

Orchards at Valley Glen
STACEY



Elevation A

Available elevations:



Elevation A



Elevation B



Elevation C

Approx. square feet: 2,500 - 2,700
Stories: 2
Bedrooms: 3 - 5
Garage: 2-car
Plan Number: N25S

This plan is an entertainer dream, with a formal dining room that can convert to an optional first floor guest suite or a study. Step into a large, open great room and kitchen with optional extended island and walk-in pantry or butler pantry option. The spacious dining nook leads to the optional covered patios. Upstairs, three additional bedrooms each feature a walk-in closet. The master bathroom is any owners dream, with optional spa-like features including a free-standing soaking tub and walk-in spa shower. A large loft can be optioned into a 4th bedroom for the growing family.

COMMUNITY LOCATION

1420 Legion Avenue
Dixon, CA 95620
707-416-0212

HOME GALLERY

One Harbor Center, Suite 150
Suisun City, CA 94585
800-852-9714



COMMUNITY LOCATION

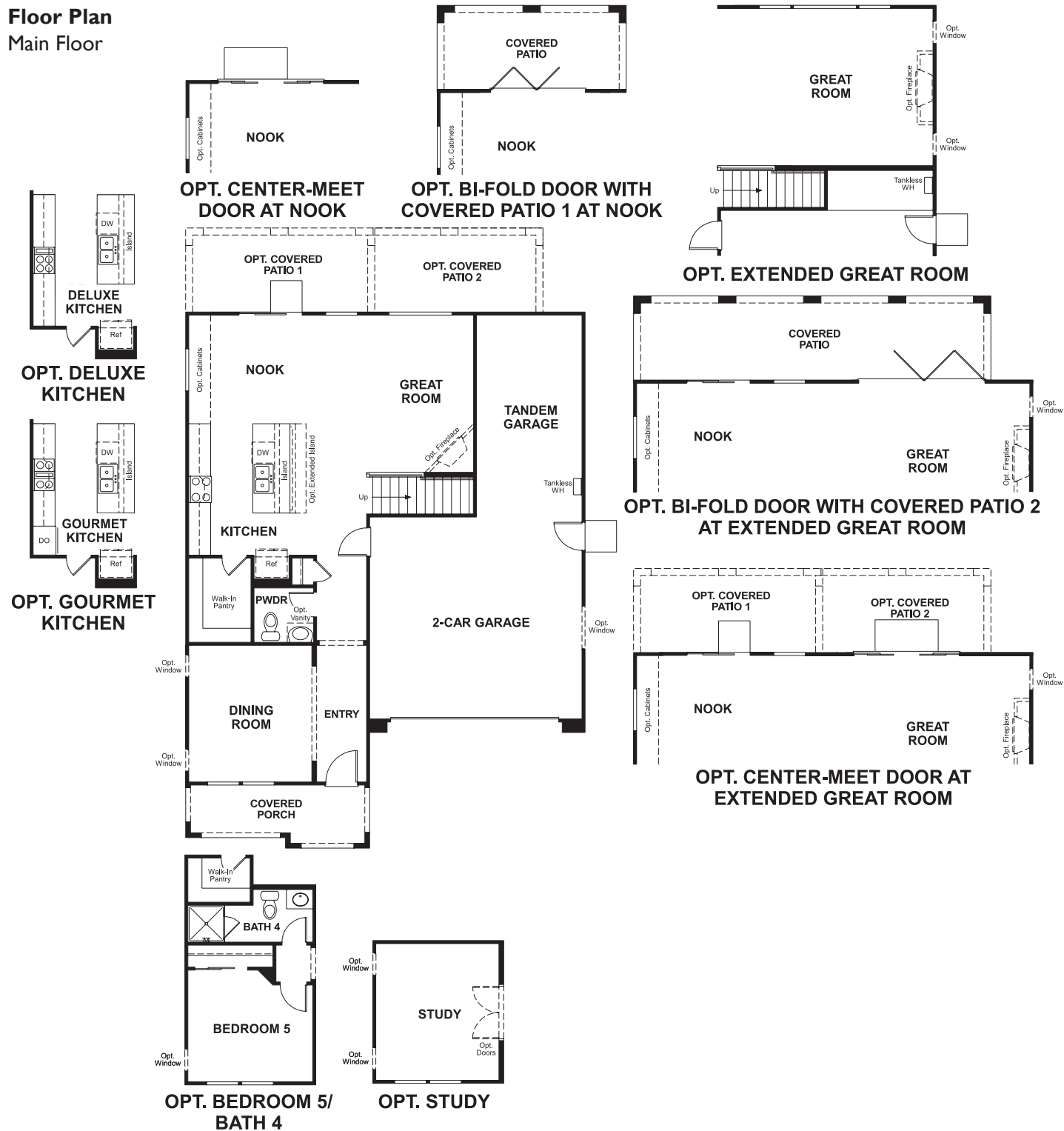
1420 Legion Avenue
Dixon, CA 95620
707-416-0212

HOME GALLERY

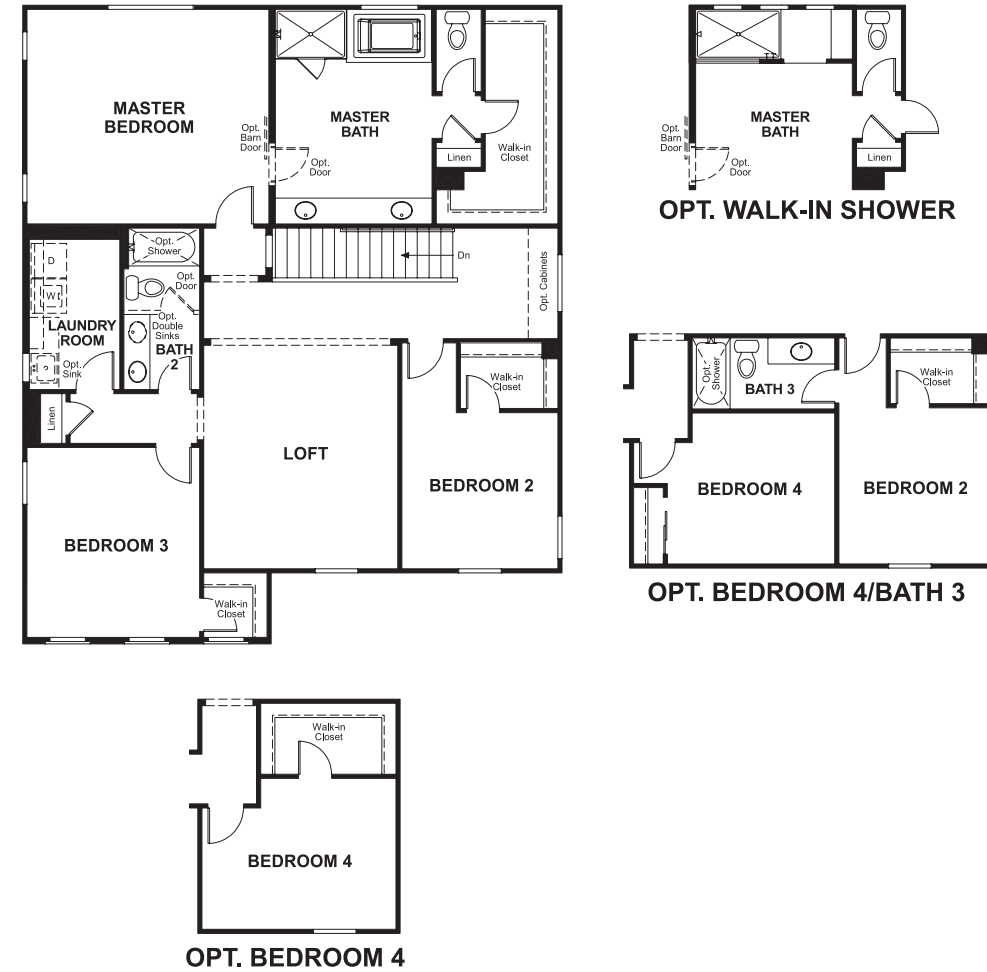
One Harbor Center, Suite 150
Suisun City, CA 94585
800-852-9714



Floor Plan
Main Floor



Floor Plan
Second Floor



THIS PLAN'S PROJECTED HERS® INDEX = 60*
Projected Rating Based on Plans – Field Confirmation Required

How does this floor plan rate?
Take a look: **100** = Standard new home* **130** = Typical resale home**
The lower the number, the better! Refer to the RESNET® HERS index brochure or go to www.RESNET.us for details.

What's a HERS® Index? HERS stands for Home Energy Rating System, a system created by RESNET® to measure home energy efficiency.[^]
A Projected HERS index or rating is a computer simulation performed prior to construction by a third-party HERS rater using RESNET-accredited rating software, rated feature and specification data derived from home plans, features and specifications, and other data selected or assumed by the rater. The projected HERS index is approximate and is subject to change without notice. Actual results will vary.

*This information is presented for education purposes only. The HERS index for a confirmed rating will be determined by a third-party HERS rater based on data gathered from on-site observations and, if required, testing of rated features for a home as featured, optioned, located, oriented and/or built.
+Standard new home is based on the RESNET® Reference Home definition with a HERS® index of 100 (based on the 2006 International Energy Conservation Code).
++Typical resale home is based on the U.S. Department of Energy definition with a HERS® index of 130.

[^]RESNET® has developed the HERS® index to indicate the comparative efficiencies of homes. It is no guarantee that energy efficiencies will be achieved.