

The Grove  
**EVETTE**

**Approx. square feet:** 1,750  
**Stories:** 3  
**Bedrooms:** 3

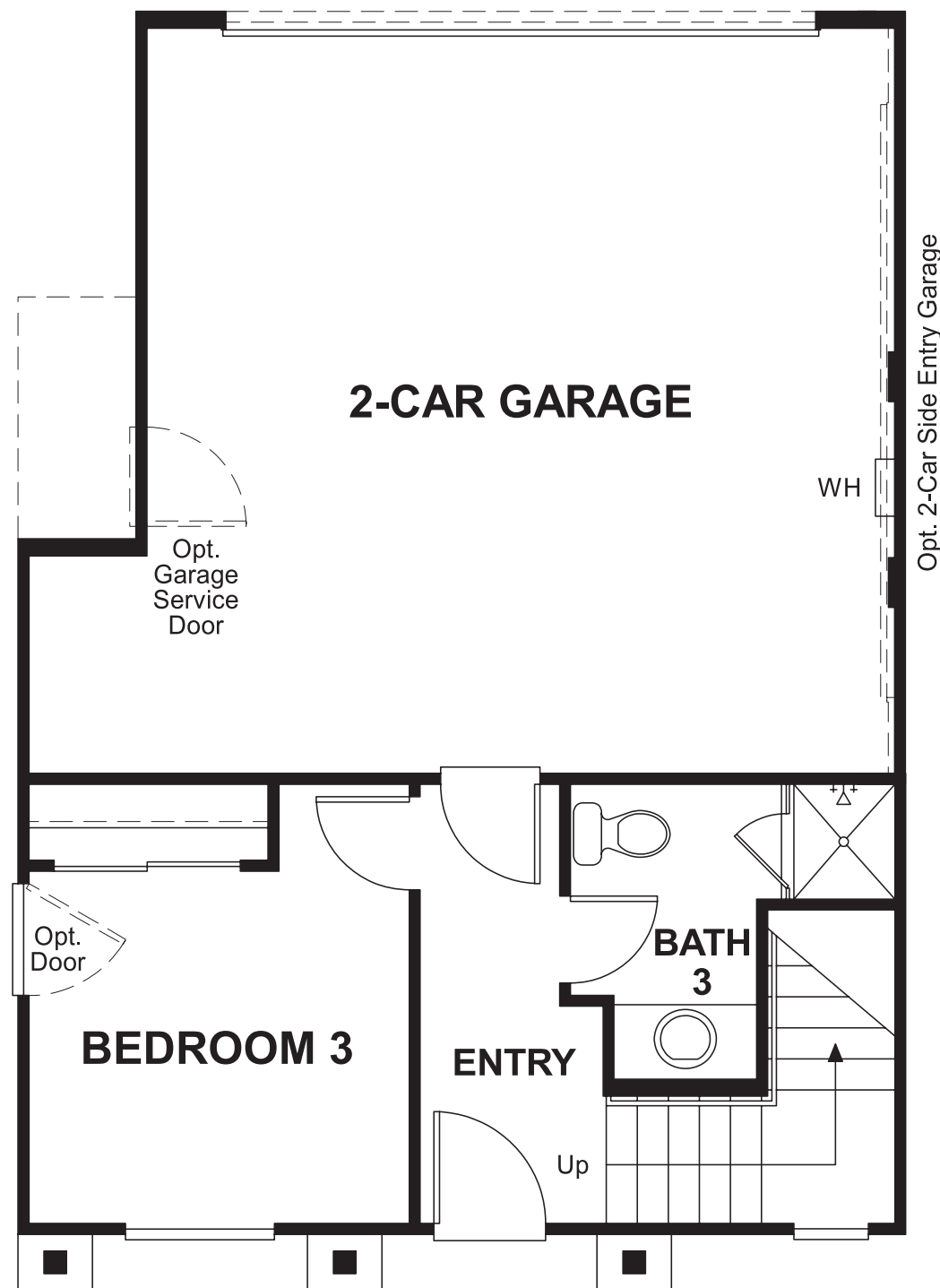
**Garage:** 2-car  
**Plan Number:** S703

The Grove  
**EVETTE**

**Approx. square feet:** 1,750  
**Stories:** 3  
**Bedrooms:** 3  
**Garage:** 2-car  
**Plan Number:** S703

The Evette includes a convenient lower-floor bedroom and bath just off the entryway. The main floor features an open kitchen with a window view of the covered balcony, while an adjacent dining room offers direct balcony access. On the other side of the kitchen, a spacious living room provides a perfect gathering space. Two master suites with private bathrooms can be found on the upper floor; one of which features an expansive walk-in closet. You'll also appreciate a laundry room located between the master bedrooms for ease of use.

**Floor Plan**  
Lower Floor



**Elevation A**

**Available elevations:**



**Elevation A**



**Elevation B**

**COMMUNITY LOCATION**  
700 East Harrison Avenue  
Pomona, CA 91767  
800-852-9714

**HOME GALLERY**  
5171 California Avenue  
Irvine, CA 92617  
800-852-9714



**COMMUNITY LOCATION**  
700 East Harrison Avenue  
Pomona, CA 91767  
800-852-9714

**HOME GALLERY**  
5171 California Avenue  
Irvine, CA 92617  
800-852-9714

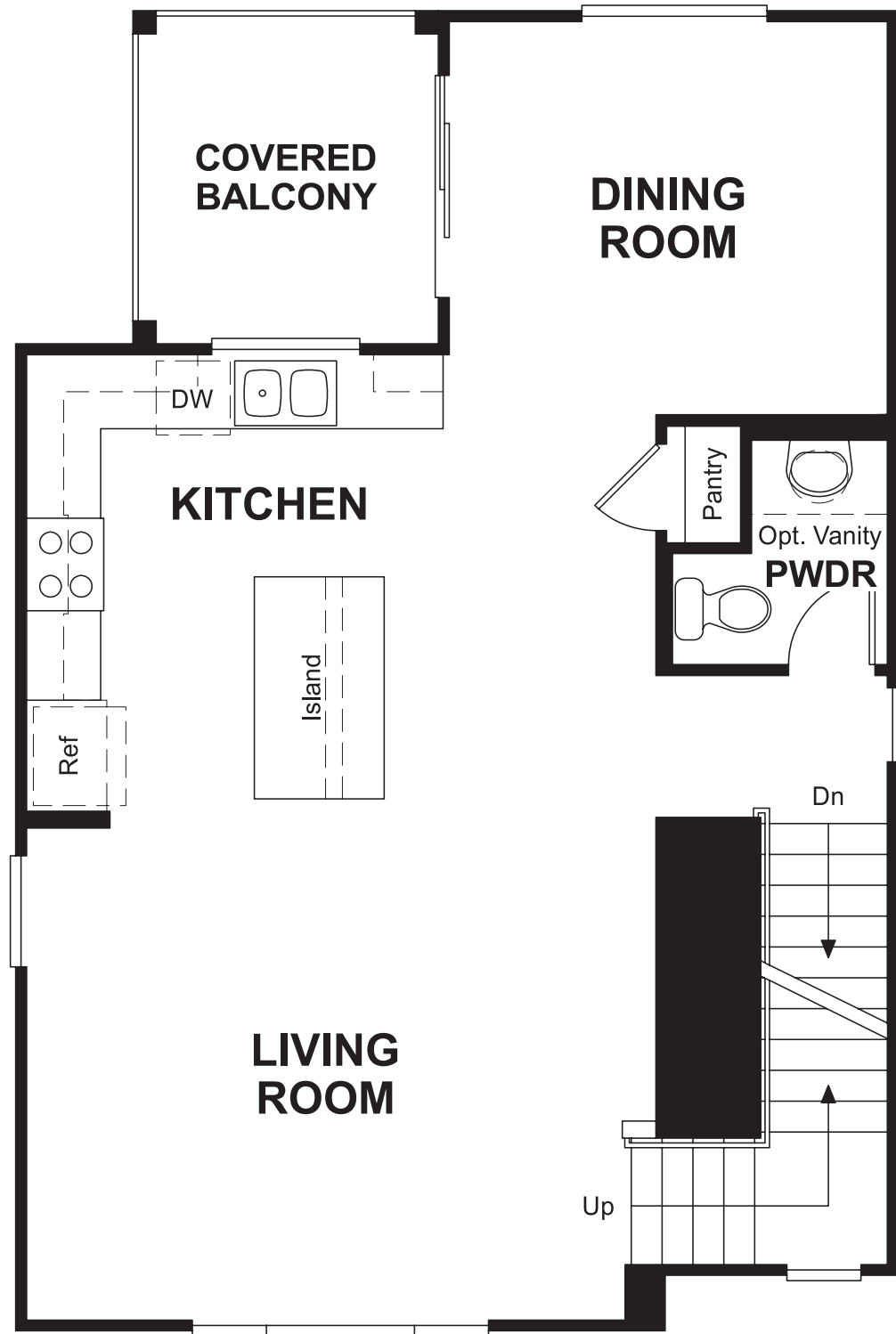


The Grove  
**EVETTE**

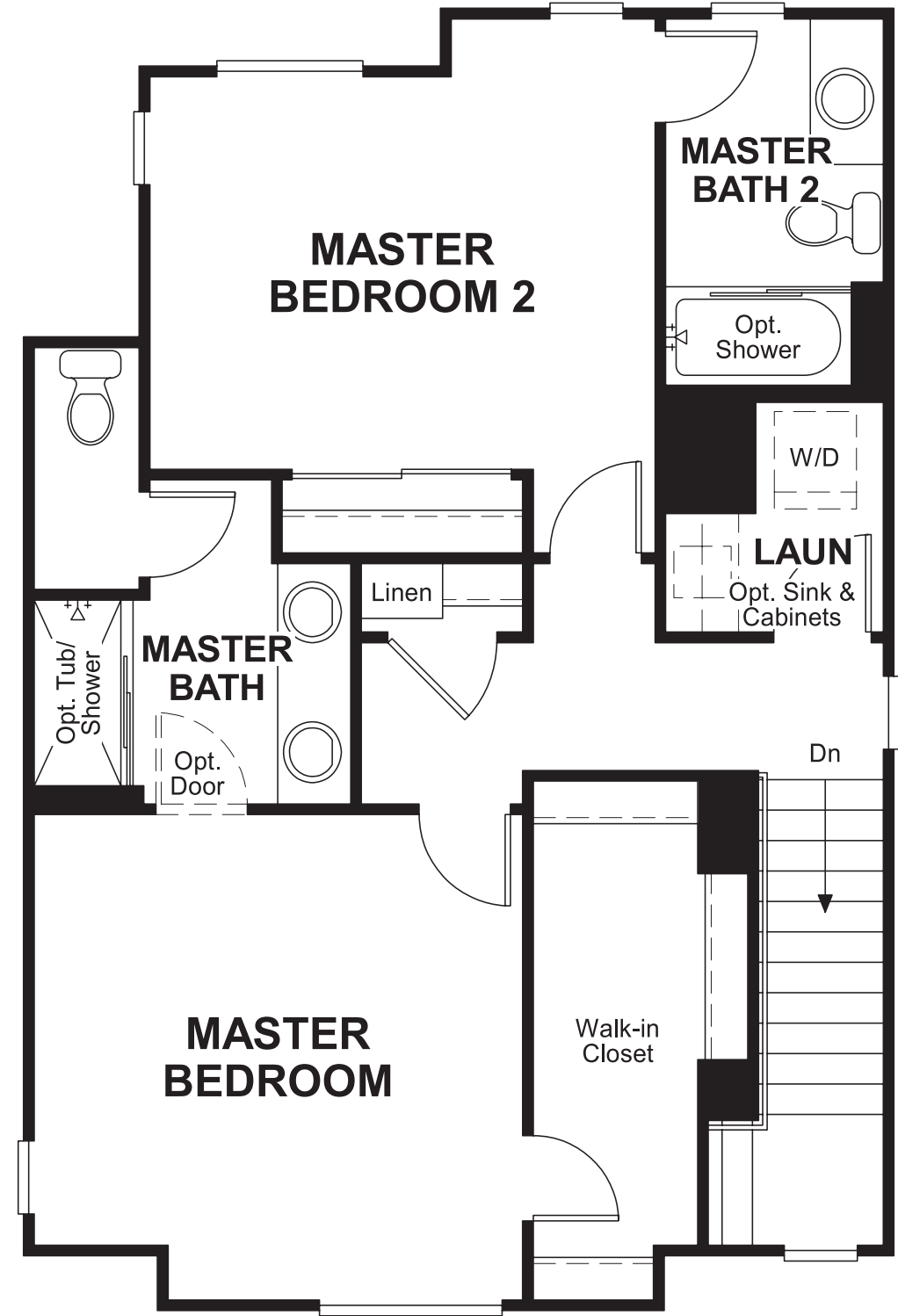
Approx. square feet: 1,750  
Stories: 3  
Bedrooms: 3

Garage: 2-car  
Plan Number: S703

Floor Plan  
Main Floor



Floor Plan  
Second Floor



**THIS PLAN'S PROJECTED  
HERS® INDEX = 74\***  
Projected Rating Based on Plans – Field Confirmation Required

**How does this floor plan rate?**  
Take a look: **100** = Standard new home\* **130** = Typical resale home\*\*  
The lower the number, the better! Refer to the RESNET® HERS index brochure or go to [www.RESNET.us](http://www.RESNET.us) for details.

**What's a HERS® Index?** HERS stands for Home Energy Rating System, a system created by RESNET® to measure home energy efficiency.<sup>^</sup>  
A Projected HERS index or rating is a computer simulation performed prior to construction by a third-party HERS rater using RESNET-accredited rating software, rated feature and specification data derived from home plans, features and specifications, and other data selected or assumed by the rater. The projected HERS index is approximate and is subject to change without notice. Actual results will vary.

\*This information is presented for education purposes only. The HERS index for a confirmed rating will be determined by a third-party HERS rater based on data gathered from on-site observations and, if required, testing of rated features for a home as featured, optioned, located, oriented and/or built.  
+Standard new home is based on the RESNET® Reference Home definition with a HERS® index of 100 (based on the 2006 International Energy Conservation Code).  
\*\*Typical resale home is based on the U.S. Department of Energy definition with a HERS® index of 130.

<sup>^</sup>RESNET® has developed the HERS® index to indicate the comparative efficiencies of homes. It is no guarantee that energy efficiencies will be achieved.