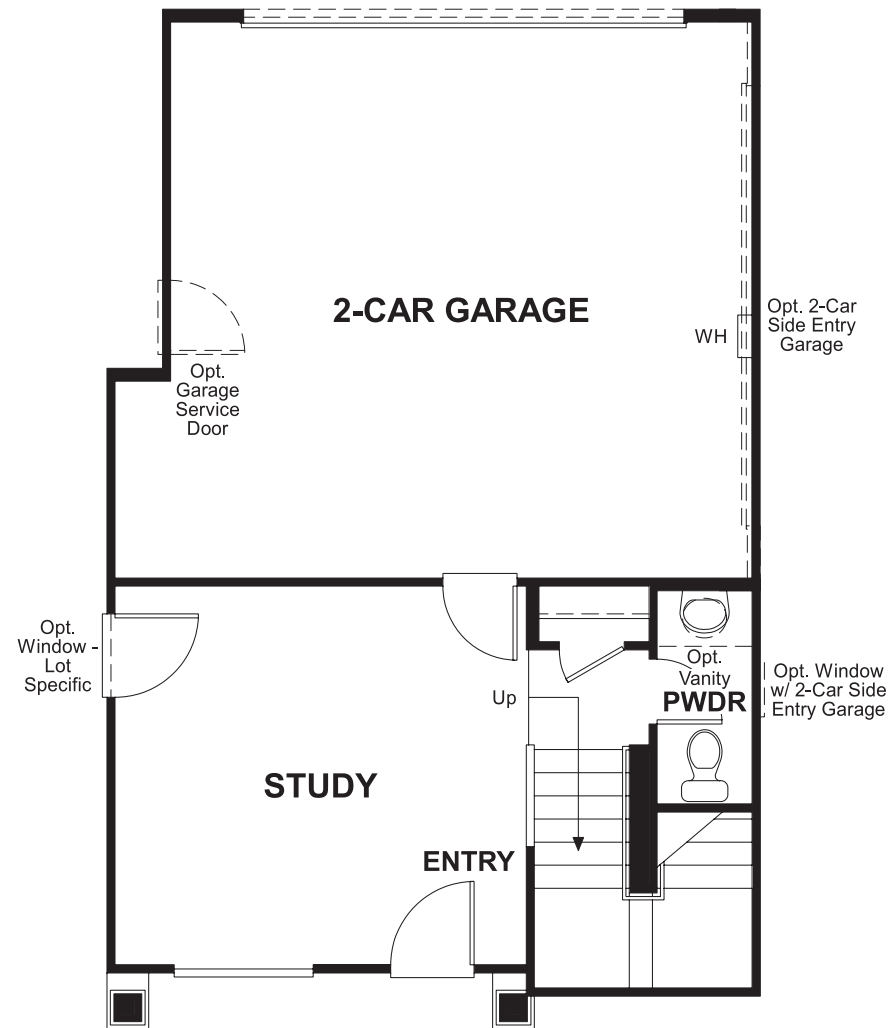


The Grove
EVONNE

Approx. square feet: 1,850
Stories: 3
Bedrooms: 3

Garage: 2-car
Plan Number: S704

Floor Plan
Lower Floor



The Grove
EVONNE

Approx. square feet: 1,850
Stories: 3
Bedrooms: 3
Garage: 2-car
Plan Number: S704

Enjoy your own private workspace on the lower floor of the Evonne, while upstairs on the main floor you'll find plenty of space for hosting friends and family. An L-shaped kitchen with a center island overlooks a charming dining room and spacious living room. The living room provides direct access to a relaxing covered balcony. Bedrooms can be found on the upper floor, where a master suite boasts a large private bath and walk-in closet. Two secondary bedrooms share a hall bath, and may also be optioned as an additional master suite if desired.



Elevation A

Available elevations:



Elevation A



Elevation B

COMMUNITY LOCATION
700 East Harrison Avenue
Pomona, CA 91767
800-852-9714

HOME GALLERY
5171 California Avenue
Irvine, CA 92617
800-852-9714



COMMUNITY LOCATION
700 East Harrison Avenue
Pomona, CA 91767
800-852-9714

HOME GALLERY
5171 California Avenue
Irvine, CA 92617
800-852-9714

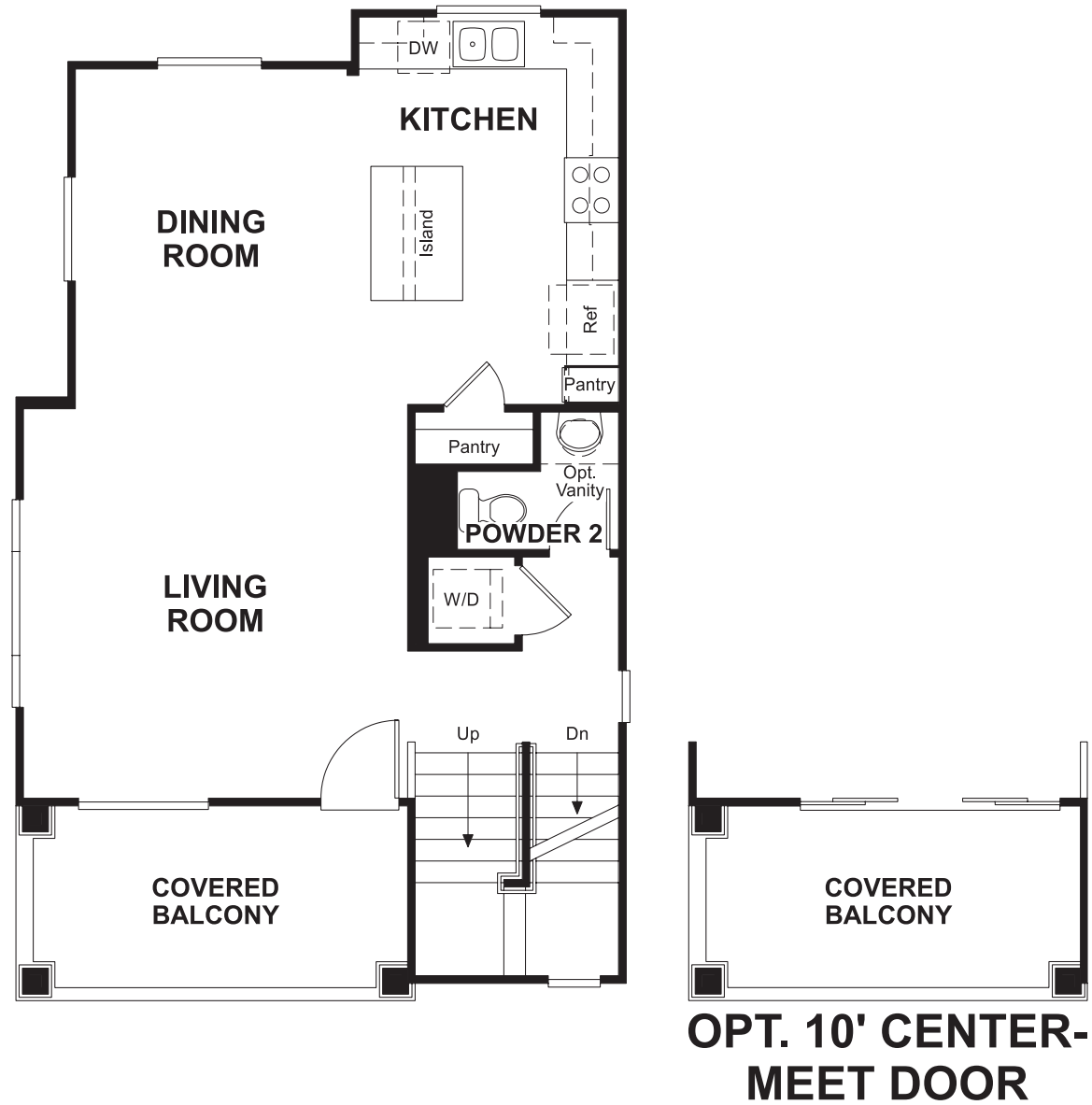


The Grove
EVONNE

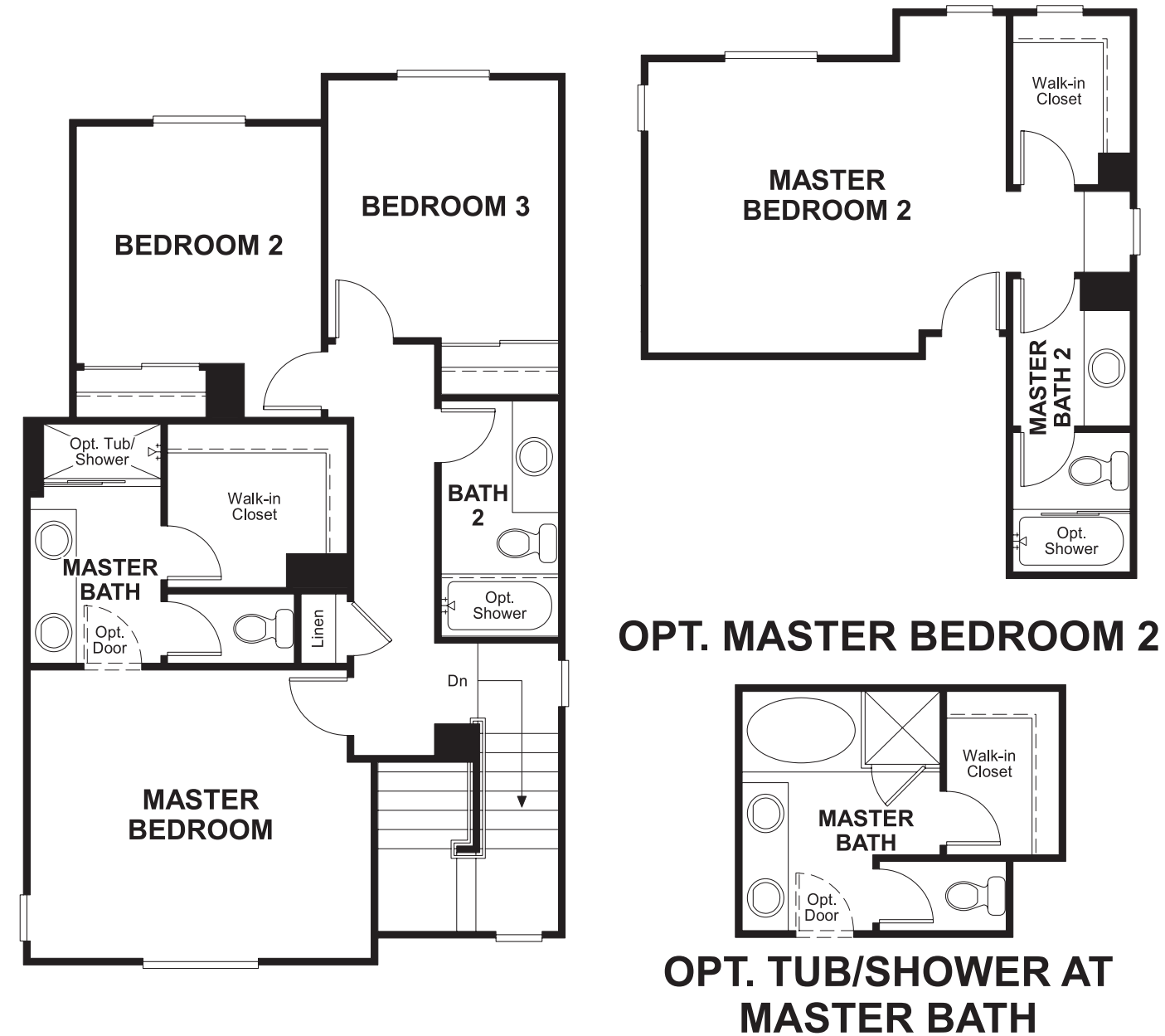
Approx. square feet: 1,850
Stories: 3
Bedrooms: 3

Garage: 2-car
Plan Number: S704

Floor Plan
Main Floor



Floor Plan
Second Floor



**THIS PLAN'S PROJECTED
HERS® INDEX = 74***
Projected Rating Based on Plans – Field Confirmation Required

How does this floor plan rate?
Take a look: **100** = Standard new home* **130** = Typical resale home**
The lower the number, the better! Refer to the RESNET® HERS index brochure or go to www.RESNET.us for details.

What's a HERS® Index? HERS stands for Home Energy Rating System, a system created by RESNET® to measure home energy efficiency.[^]
A Projected HERS index or rating is a computer simulation performed prior to construction by a third-party HERS rater using RESNET-accredited rating software, rated feature and specification data derived from home plans, features and specifications, and other data selected or assumed by the rater. The projected HERS index is approximate and is subject to change without notice. Actual results will vary.

*This information is presented for education purposes only. The HERS index for a confirmed rating will be determined by a third-party HERS rater based on data gathered from on-site observations and, if required, testing of rated features for a home as featured, optioned, located, oriented and/or built.
+Standard new home is based on the RESNET® Reference Home definition with a HERS® index of 100 (based on the 2006 International Energy Conservation Code).
++Typical resale home is based on the U.S. Department of Energy definition with a HERS® index of 130.

[^]RESNET® has developed the HERS® index to indicate the comparative efficiencies of homes. It is no guarantee that energy efficiencies will be achieved.