

Lemona Village
EASTBROOK



Elevation A

Available elevations:



Elevation A



Elevation B

Approx. square feet: 1,850

Stories: 2

Bedrooms: 3 - 4

Garage: 2-car

Plan Number: S733

Offering a smart balance of private living space and common areas, the versatile Eastbrook was designed with your needs in mind. A spacious corner kitchen functions as the heart of the main floor, with abundant counter space, a large island, a convenient walk-in pantry and an optional built-in desk. Additional main-floor highlights include a charming dining room and a generous living room. Upstairs, a loft neighbors a full hall bath and two secondary bedrooms. You'll also find a laundry room and a lavish master suite, featuring a private bathroom with dual sinks, a separate tub and shower, and a walk-in closet at the back. Personalize further with a teen room and extra bedroom.

DRAFT

COMMUNITY LOCATION

15000 West Anaya Drive
North Hills, CA 91343
800-852-9714

HOME GALLERY

5171 California Avenue
Irvine, CA 92617
800-852-9714



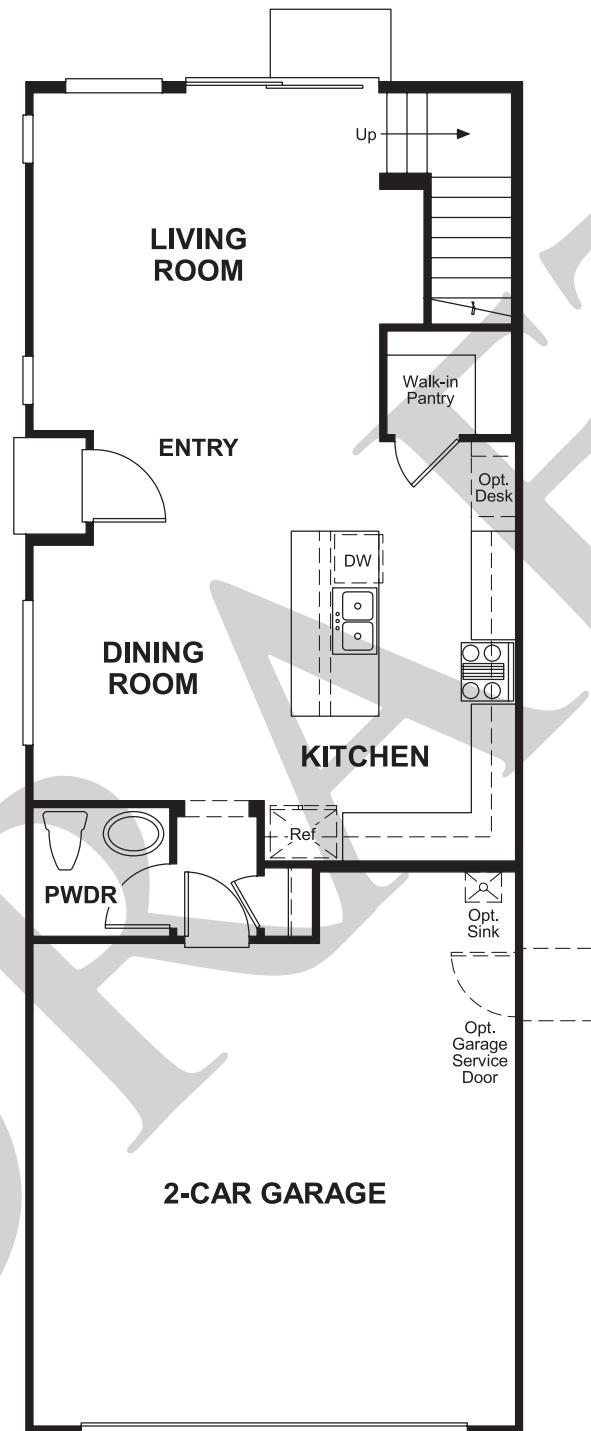
COMMUNITY LOCATION

15000 West Anaya Drive
North Hills, CA 91343
800-852-9714

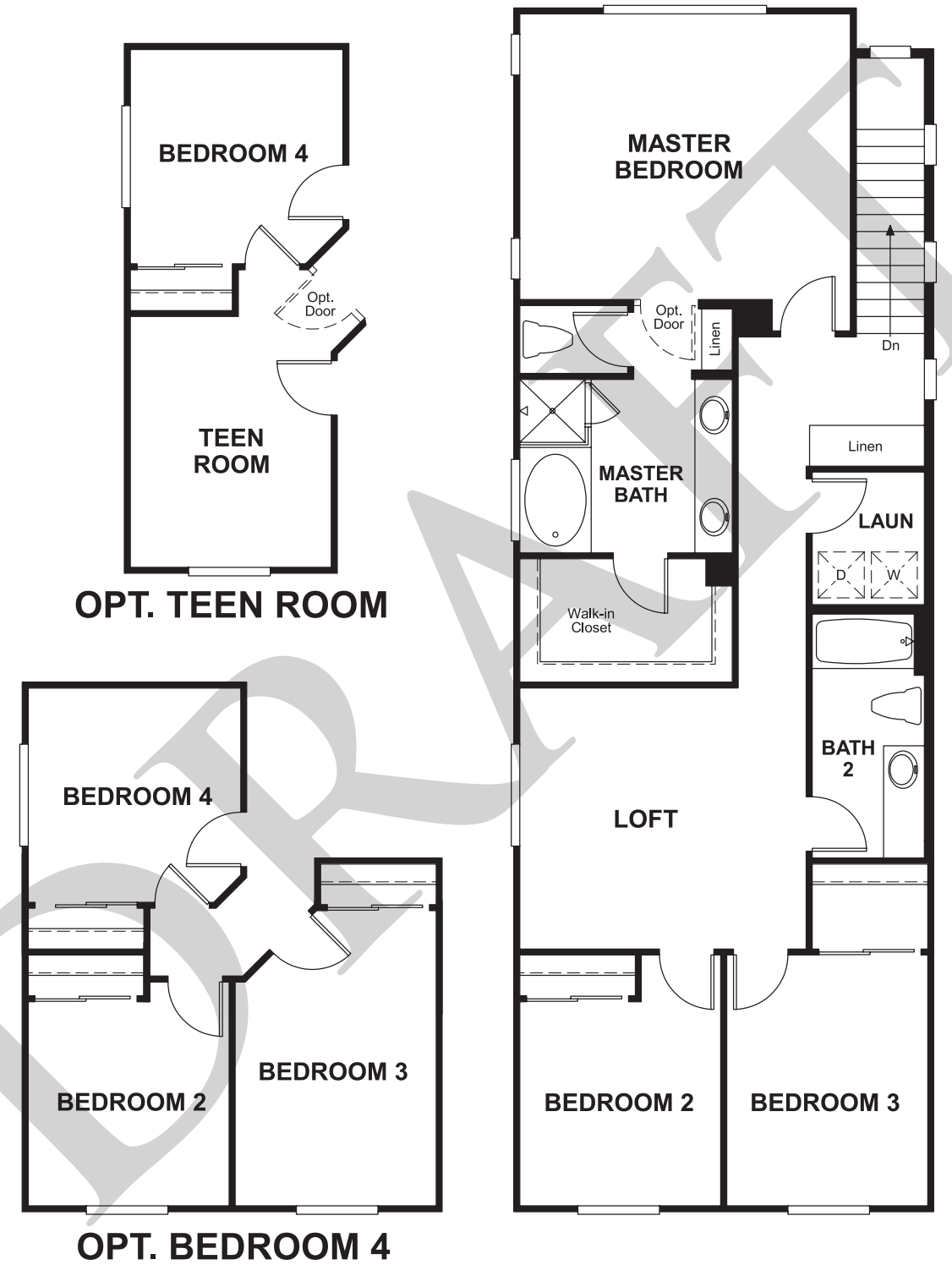
HOME GALLERY

5171 California Avenue
Irvine, CA 92617
800-852-9714

Floor Plan
Main Floor



Floor Plan
Second Floor



THIS PLAN'S PROJECTED HERS® INDEX = 70*
Projected Rating Based on Plans – Field Confirmation Required

How does this floor plan rate?
Take a look: **100** = Standard new home* **130** = Typical resale home**
The lower the number, the better! Refer to the RESNET® HERS index brochure or go to www.RESNET.us for details.

What's a HERS® Index? HERS stands for Home Energy Rating System, a system created by RESNET® to measure home energy efficiency.[^]
A Projected HERS index or rating is a computer simulation performed prior to construction by a third-party HERS rater using RESNET-accredited rating software, rated feature and specification data derived from home plans, features and specifications, and other data selected or assumed by the rater. The projected HERS index is approximate and is subject to change without notice. Actual results will vary.

*This information is presented for education purposes only. The HERS index for a confirmed rating will be determined by a third-party HERS rater based on data gathered from on-site observations and, if required, testing of rated features for a home as featured, optioned, located, oriented and/or built.
+Standard new home is based on the RESNET® Reference Home definition with a HERS® index of 100 (based on the 2006 International Energy Conservation Code).
++Typical resale home is based on the U.S. Department of Energy definition with a HERS® index of 130.

[^]RESNET® has developed the HERS® index to indicate the comparative efficiencies of homes. It is no guarantee that energy efficiencies will be achieved.