

Sienna Hills
AUGUSTA



Elevation A

Available elevations:



Elevation A



Elevation B



Elevation C

Approx. square feet: 1,940

Stories: 1

Bedrooms: 3

Garage: 2-car

Plan Number: P740

A beautiful ranch-style floor plan, the Augusta boasts a master suite with a spacious walk-in closet and master bath, as well as two additional bedrooms with a shared full bath. An open kitchen with a large center island overlooks both an inviting dining room and great room—each with direct access to a relaxing covered patio. Additional highlights of the Augusta plan include a 2-car garage with storage space and a conveniently located laundry room with a coat closet. Personalize this home with a lavish club room, a gourmet kitchen, a study and more.



COMMUNITY LOCATION

21284 East Almeria Road
Buckeye, AZ 85396
623-842-5502

HOME GALLERY

16427 North Scottsdale Road, Suite 175
Scottsdale, AZ 85254
877-444-1485



COMMUNITY LOCATION

21284 East Almeria Road
Buckeye, AZ 85396
623-842-5502

HOME GALLERY

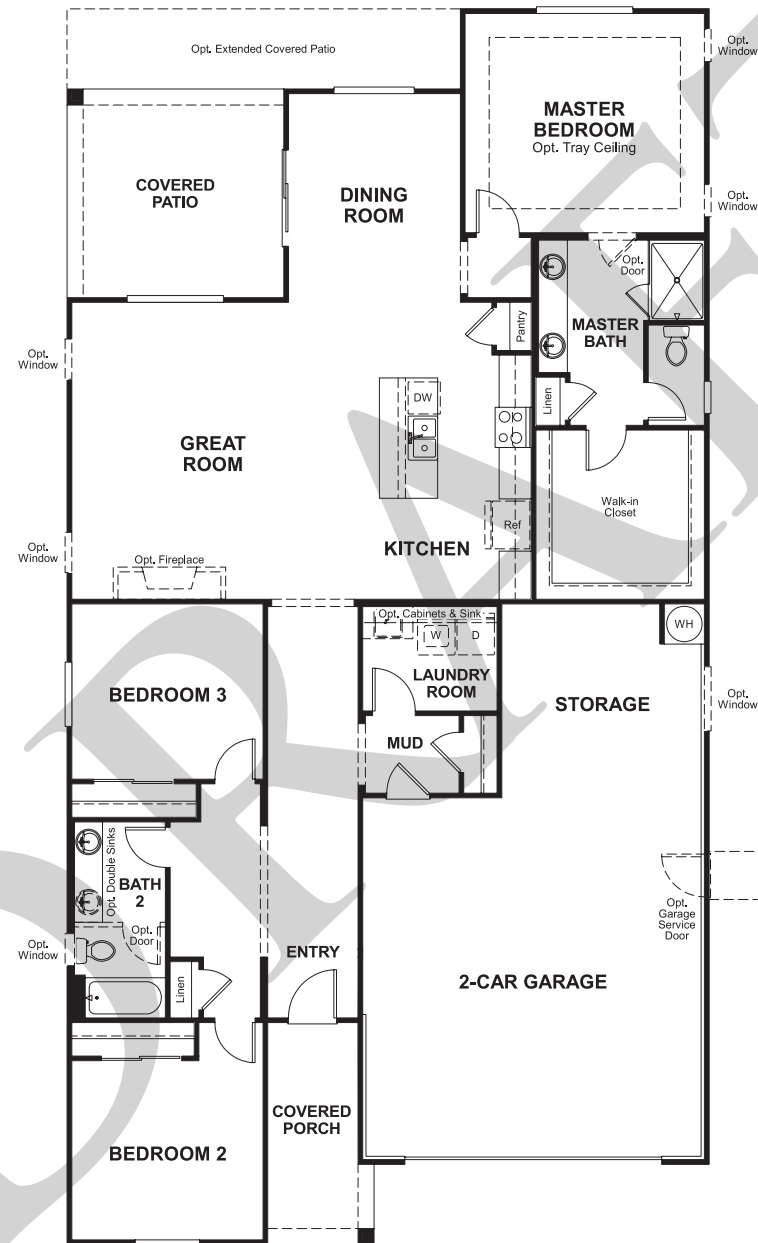
16427 North Scottsdale Road, Suite 175
Scottsdale, AZ 85254
877-444-1485

Sienna Hills
AUGUSTA

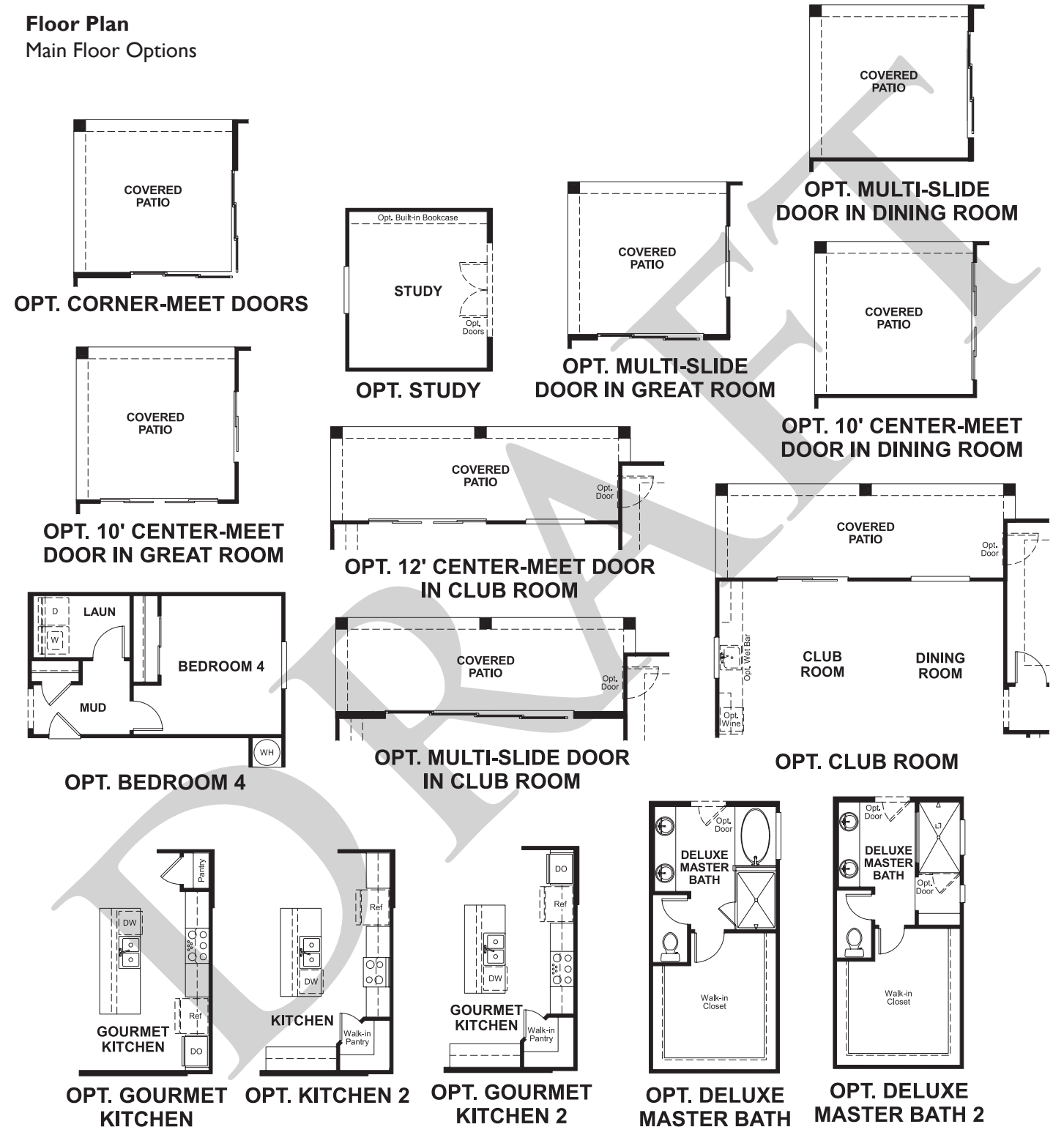
Approx. square feet: 1,940
Stories: 1
Bedrooms: 3

Garage: 2-car
Plan Number: P740

Floor Plan
Main Floor



Floor Plan
Main Floor Options



**THIS PLAN'S PROJECTED
HERS® INDEX = 64***
Projected Rating Based on Plans – Field Confirmation Required

How does this floor plan rate?
Take a look: **100** = Standard new home* **130** = Typical resale home**
The lower the number, the better! Refer to the RESNET® HERS index brochure or go to www.RESNET.us for details.

What's a HERS® Index? HERS stands for Home Energy Rating System, a system created by RESNET® to measure home energy efficiency.[^]
A Projected HERS index or rating is a computer simulation performed prior to construction by a third-party HERS rater using RESNET-accredited rating software, rated feature and specification data derived from home plans, features and specifications, and other data selected or assumed by the rater. The projected HERS index is approximate and is subject to change without notice. Actual results will vary.

*This information is presented for education purposes only. The HERS index for a confirmed rating will be determined by a third-party HERS rater based on data gathered from on-site observations and, if required, testing of rated features for a home as featured, optioned, located, oriented and/or built.
+Standard new home is based on the RESNET® Reference Home definition with a HERS® index of 100 (based on the 2006 International Energy Conservation Code).
**Typical resale home is based on the U.S. Department of Energy definition with a HERS® index of 130.

[^]RESNET® has developed the HERS® index to indicate the comparative efficiencies of homes. It is no guarantee that energy efficiencies will be achieved.