

Homestead at Gladden Farms
ARLINGTON



Elevation A

Approx. square feet: 1,810
Stories: 1
Bedrooms: 3 - 4
Garage: 2-car
Plan Number: T721

Looking for a ranch-style floor plan? Put the Arlington at the top of your list! This exciting home offers a generous open great room, dining room and kitchen, two bedrooms with a shared bath, and a separate master suite with a private bath and walk-in closet. Conveniences like a secluded study, a laundry room with optional cabinets and sink, a broad kitchen island and a built-in pantry add to the Arlington's single-floor appeal. Personalize this home with options like gourmet kitchen features, a deluxe master bath, a 3-car garage and more.

Available elevations:



Elevation A



Elevation B



Elevation C - Shown with Optional Stone



COMMUNITY LOCATION
Tangerine Road and Postvale Road
Marana, AZ 85653
520-498-4155

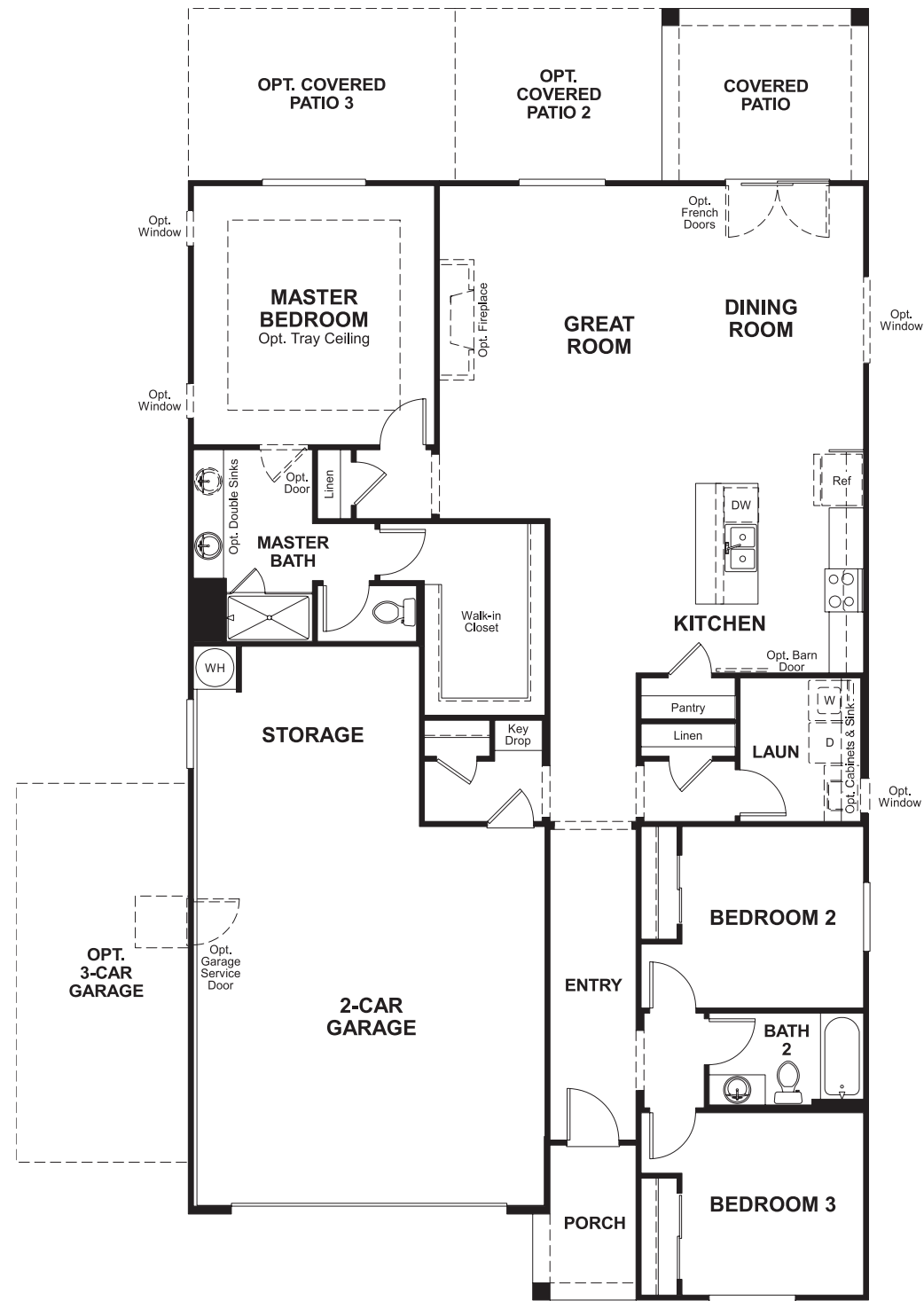
HOME GALLERY
3091 West Ina Road
Tucson, AZ 85741
520-498-4112



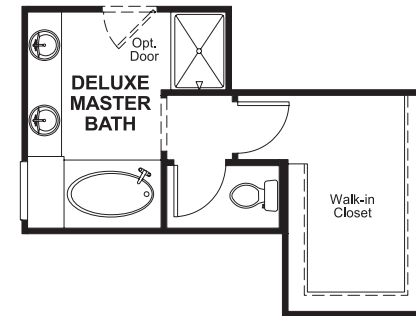
COMMUNITY LOCATION
Tangerine Road and Postvale Road
Marana, AZ 85653
520-498-4155

HOME GALLERY
3091 West Ina Road
Tucson, AZ 85741
520-498-4112

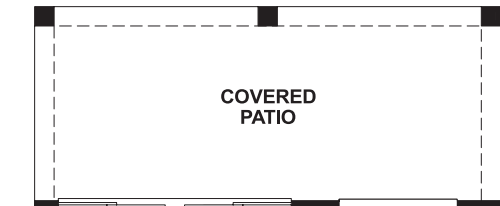
Floor Plan
Main Floor



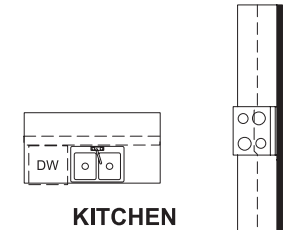
Floor Plan
Main Floor Options



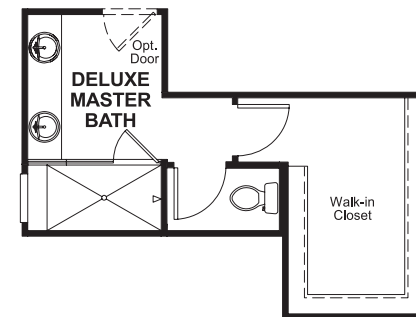
OPT. DELUXE MASTER BATH 1



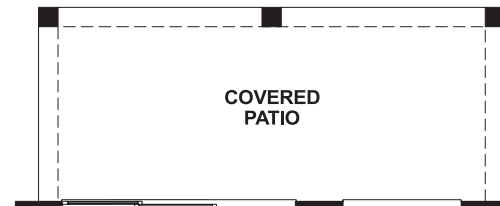
OPT. 12' CENTER-MEET DOOR



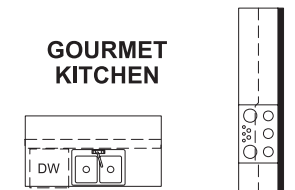
OPT. KITCHEN 2



OPT. DELUXE MASTER BATH 2



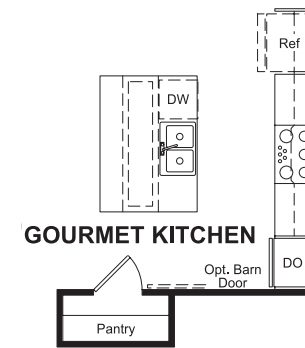
OPT. MULTI-SLIDE DOOR



OPT. GOURMET KITCHEN 2



OPT. BEDROOM 4



OPT. GOURMET KITCHEN

THIS PLAN'S PROJECTED HERS® INDEX = 67*
Projected Rating Based on Plans – Field Confirmation Required

How does this floor plan rate?
Take a look: 100 = Standard new home* 130 = Typical resale home**
The lower the number, the better! Refer to the RESNET® HERS index brochure or go to www.RESNET.us for details.

What's a HERS® Index? HERS stands for Home Energy Rating System, a system created by RESNET® to measure home energy efficiency. A Projected HERS index or rating is a computer simulation performed prior to construction by a third-party HERS rater using RESNET-accredited rating software, rated feature and specification data derived from home plans, features and specifications, and other data selected or assumed by the rater. The projected HERS index is approximate and is subject to change without notice. Actual results will vary.

*This information is presented for education purposes only. The HERS index for a confirmed rating will be determined by a third-party HERS rater based on data gathered from on-site observations and, if required, testing of rated features for a home as featured, optioned, located, oriented and/or built.
+Standard new home is based on the RESNET® Reference Home definition with a HERS® index of 100 (based on the 2006 International Energy Conservation Code).
++Typical resale home is based on the U.S. Department of Energy definition with a HERS® index of 130.

^RESNET® has developed the HERS® index to indicate the comparative efficiencies of homes. It is no guarantee that energy efficiencies will be achieved.