

Arlington Point
HOLBROOK



Elevation A

Approx. square feet: 3,100

Stories: 1

Bedrooms: 3 - 4

Garage: 3-car

Plan Number: L31H

The ranch-style Holbrook plan offers a formal dining room connected to the kitchen via a butler's pantry. A large kitchen island overlooks the nook and great room, with views of the covered patio. The master suite includes two walk-in closets and a private bath. A study, convenient laundry and two bedrooms with a Jack-and-jill bath are included.

Available elevations:



Elevation A



Elevation B



Elevation C

COMMUNITY LOCATION

Westwind Road and Oleta Avenue
Las Vegas, NV 89139
702-638-4400

HOME GALLERY

7770 South Dean Martin Drive, Suite 308
Las Vegas, NV 89139
702-617-8400



COMMUNITY LOCATION

Westwind Road and Oleta Avenue
Las Vegas, NV 89139
702-638-4400

HOME GALLERY

7770 South Dean Martin Drive, Suite 308
Las Vegas, NV 89139
702-617-8400



Arlington Point
HOLBROOK

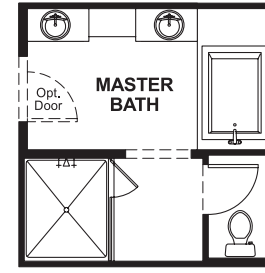
Approx. square feet: 3,100
Stories: 1
Bedrooms: 3 - 4

Garage: 3-car
Plan Number: L31H

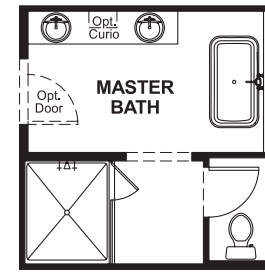
Floor Plan
Main Floor



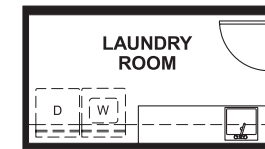
Floor Plan
Main Floor Options



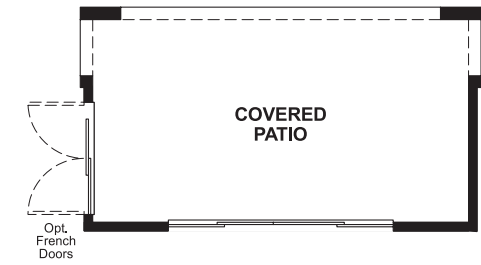
OPT. MASTER BATH VANITY



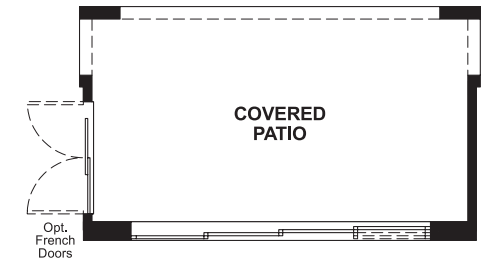
OPT. FREE STANDING TUB



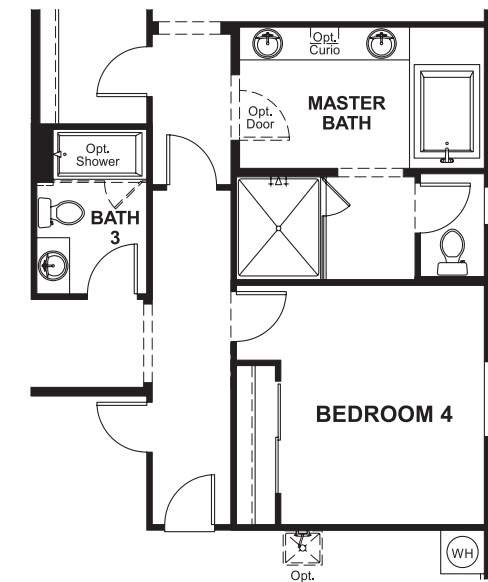
OPT. DELUXE LAUNDRY



OPT. 12' CENTER MEET DOOR



OPT. MULTI-SLIDE DOOR



OPT. BEDROOM 4/BATH 3