

Heritage at Meridian
ROBERT



Elevation A

Approx. square feet: 4,000

Stories: 1

Bedrooms: 4

Garage: 3-car

Plan Number: P40R

In addition to a lavish master suite, the ranch-style Robert plan boasts an optional guest suite—complete with a bedroom, living room, kitchenette and private bath. Other highlights include a game room, a private study, a formal dining room, a spacious great room with an optional fireplace and an inviting kitchen with a center island, breakfast nook and optional professional features. Covered patio also included!

Available elevations:



Elevation B



Elevation C



COMMUNITY LOCATION

23060 East Parkside Drive
Queen Creek, AZ 85142
480-624-0244

HOME GALLERY

16427 North Scottsdale Road, Suite 175
Scottsdale, AZ 85254
877-444-1485



COMMUNITY LOCATION

23060 East Parkside Drive
Queen Creek, AZ 85142
480-624-0244

HOME GALLERY

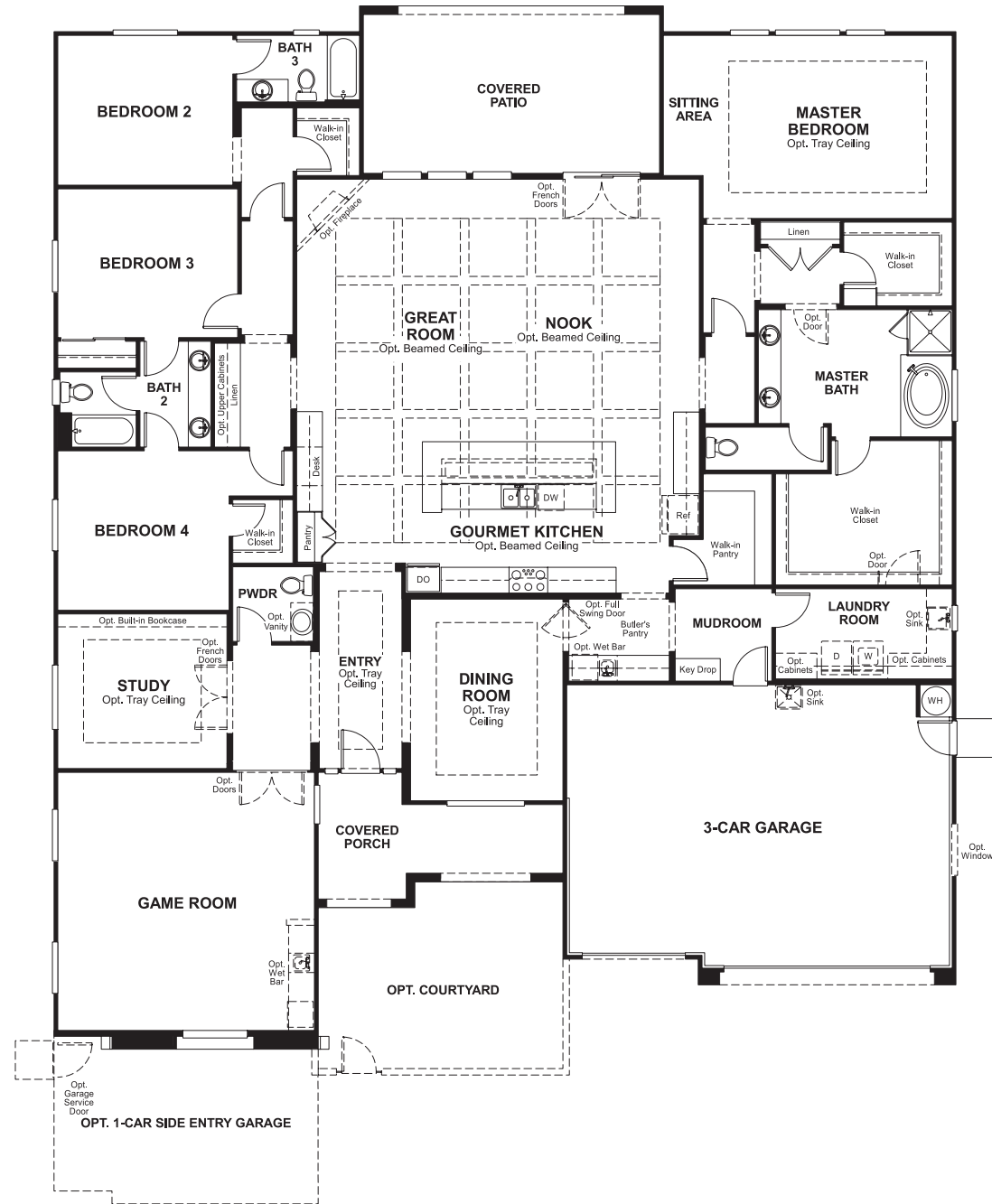
16427 North Scottsdale Road, Suite 175
Scottsdale, AZ 85254
877-444-1485

Heritage at Meridian
ROBERT

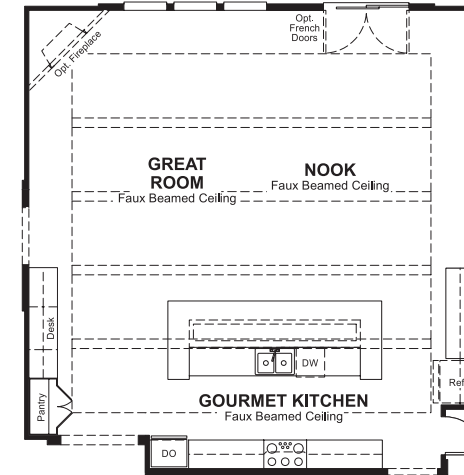
Approx. square feet: 4,000
Stories: 1
Bedrooms: 4

Garage: 3-car
Plan Number: P40R

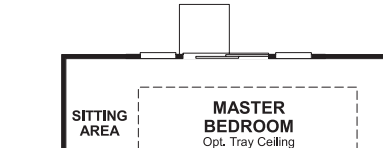
Floor Plan
Main Floor



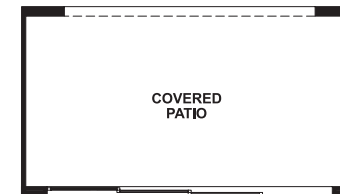
Floor Plan
Main Floor Options



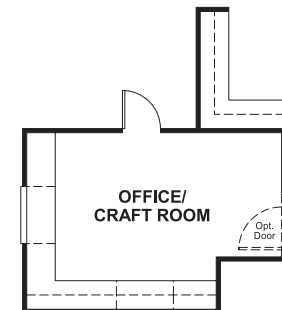
OPT. FAUX BEAMED CEILING



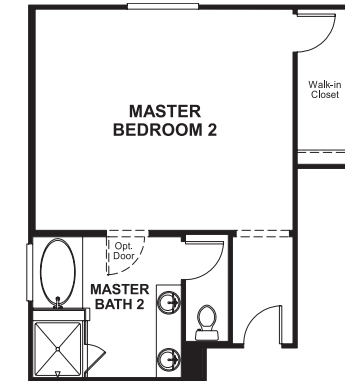
OPT. SLIDING GLASS DOOR AT MASTER BEDROOM



OPT. MULTI-SLIDE DOOR AT GREAT ROOM



OPT. OFFICE/CRAFT ROOM



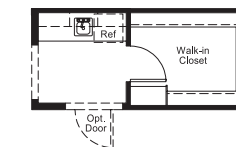
OPT. MASTER BEDROOM 2 & MASTER BATH 2



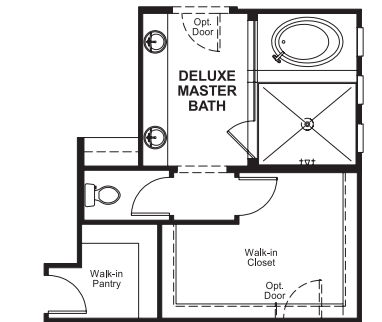
OPT. PROFESSIONAL KITCHEN



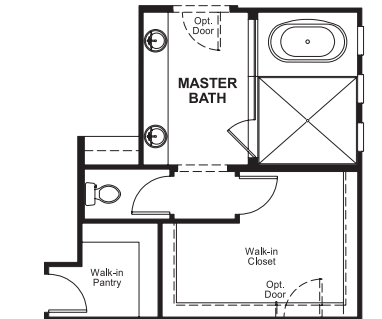
OPT. GUEST SUITE



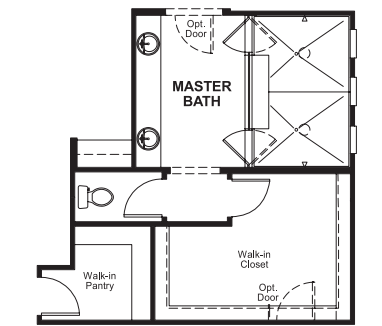
OPT. BAR ILO LINEN



OPT. DELUXE MASTER BATH



OPT. FREE-STANDING TUB



OPT. WALK-IN SHOWER

THIS PLAN'S PROJECTED HERS® INDEX = 59*
Projected Rating Based on Plans – Field Confirmation Required

How does this floor plan rate?
Take a look: 100 = Standard new home* 130 = Typical resale home**
The lower the number, the better! Refer to the RESNET® HERS index brochure or go to www.RESNET.us for details.

What's a HERS® Index? HERS stands for Home Energy Rating System, a system created by RESNET® to measure home energy efficiency.[^]
A Projected HERS index or rating is a computer simulation performed prior to construction by a third-party HERS rater using RESNET-accredited rating software, rated feature and specification data derived from home plans, features and specifications, and other data selected or assumed by the rater. The projected HERS index is approximate and is subject to change without notice. Actual results will vary.

*This information is presented for education purposes only. The HERS index for a confirmed rating will be determined by a third-party HERS rater based on data gathered from on-site observations and, if required, testing of rated features for a home as featured, optioned, located, oriented and/or built.
+Standard new home is based on the RESNET® Reference Home definition with a HERS® index of 100 (based on the 2006 International Energy Conservation Code).
**Typical resale home is based on the U.S. Department of Energy definition with a HERS® index of 130.

[^]RESNET® has developed the HERS® index to indicate the comparative efficiencies of homes. It is no guarantee that energy efficiencies will be achieved.