

SAN TAN HEIGHTS
AZURE



APPROX. SQUARE FEET: 1,590
STORIES: 1
BEDROOMS: 2-3
GARAGE: 2-car
PLAN NUMBER: P910

Part of the inspired Seasons Collection, the ranch-style Azure plan boasts ample space for entertaining, including a great room; a well-appointed kitchen with a walk-in pantry, center island and adjacent dining room; and a relaxing covered patio. A lavish master suite with an attached bath and oversized walk-in closet is separated from a second bedroom and quiet study, which can be optioned as a third bedroom. Additional highlights include a tech center and a convenient 2-car garage.

Available elevation:



Elevation A



Elevation B



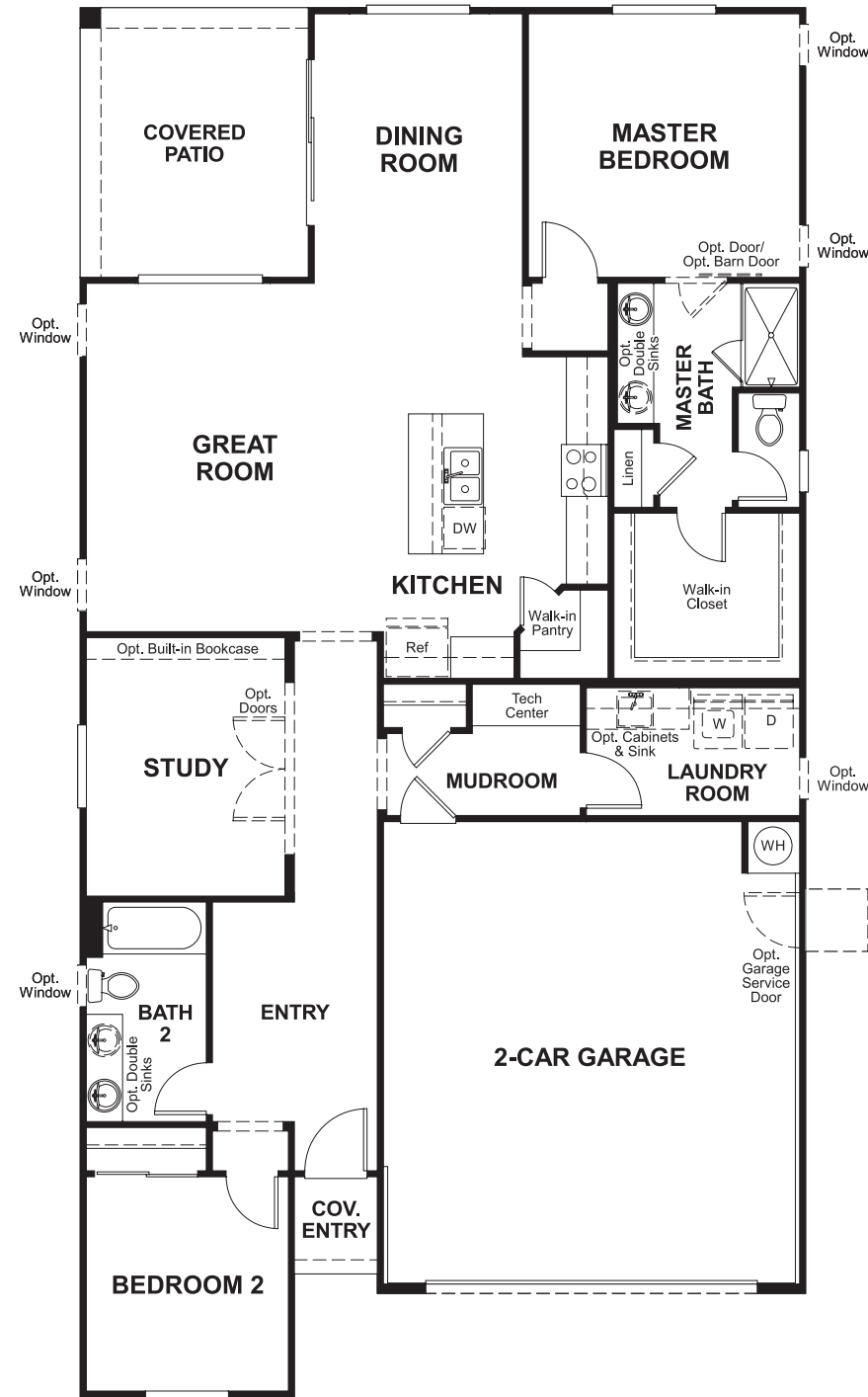
Elevation C

COMMUNITY LOCATION 33357 North Mildred Lane
San Tan Valley, AZ 85142
480-970-2636

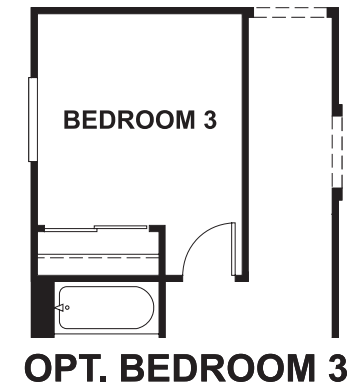
HOME GALLERY 16427 North Scottsdale Road, Suite 175
Scottsdale, AZ 85254
877-444-1485

RICHMONDAMERICAN.COM/SEASONS

FLOOR PLAN
MAIN FLOOR



FLOOR PLAN
MAIN FLOOR OPTION



**THIS PLAN'S PROJECTED
HERS® INDEX = 65***
Projected Rating Based on Plans – Field Confirmation Required

How does this floor plan rate?
Take a look: **100** = Standard new home+ **130** = Typical resale home**
The lower the number, the better! Refer to the RESNET® HERS index brochure or go to www.RESNET.us for details.

What's a HERS® Index? HERS stands for Home Energy Rating System, a system created by RESNET® to measure home energy efficiency. A Projected HERS index or rating is a computer simulation performed prior to construction by a third-party HERS rater using RESNET-accredited rating software, rated feature and specification data derived from home plans, features and specifications, and other data selected or assumed by the rater. The projected HERS index is approximate and is subject to change without notice. Actual results will vary.

*This information is presented for education purposes only. The HERS index for a confirmed rating will be determined by a third-party HERS rater based on data gathered from on-site observations and, if required, testing of rated features for a home as featured, optioned, located, oriented and/or built.
+Standard new home is based on the RESNET® Reference Home definition with a HERS® index of 100 (based on the 2006 International Energy Conservation Code).
**Typical resale home is based on the U.S. Department of Energy definition with a HERS® index of 130.

^RESNET® has developed the HERS® index to indicate the comparative efficiencies of homes. It is no guarantee that energy efficiencies will be achieved.